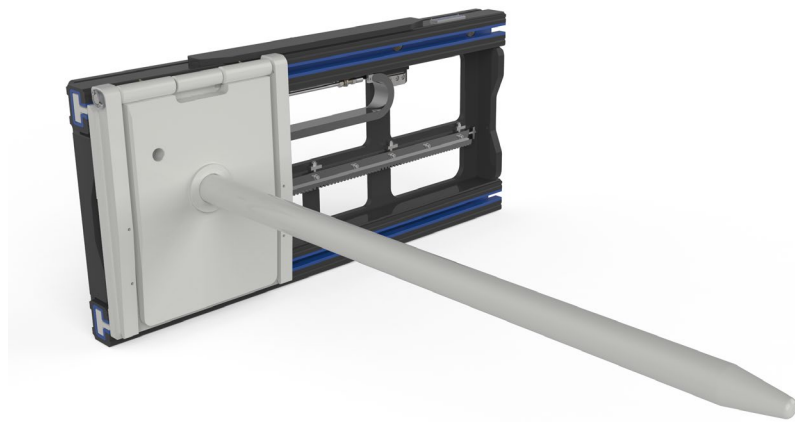




Ultra High-Capacity Carrying Ram



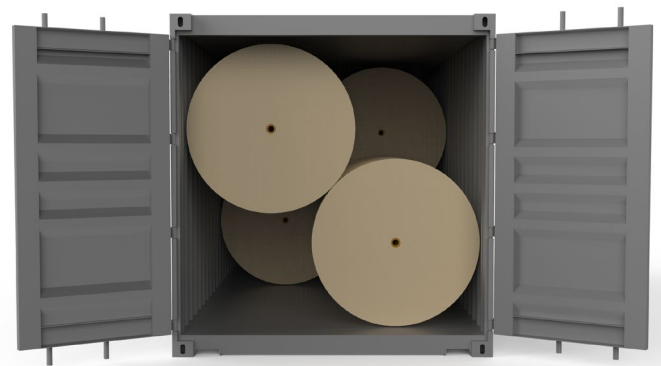
Efficient Loading and Unloading of Paper Reels
and Rolls into and out of Shipping Containers

The Cascade High-Capacity Carrying Ram is an ultra-high capacity paper roll carrying ram for operations that handle large and heavy reels and rolls of hard paper.



The heavy-duty construction provides maximum durability while the front tilt feature and side-shift option enable maximum flexibility when end handling rolls to load and unload shipping containers.

The Ultra High-Capacity Carrying Ram is ideally suited for use when paper reels and rolls will not fit into a shipping container in the vertical and/or traditional bilge configurations. In these cases, lengthwise horizontal loading of the reels and rolls, or end loading, is the only option to maximize the diagonal space of the container.



Features & Benefits:



Excellent visibility through the attachment



Front tilt, pin type bearing prevents wedging of the roll and reel cores



Removable ram arm provides maximum reel and roll handling range

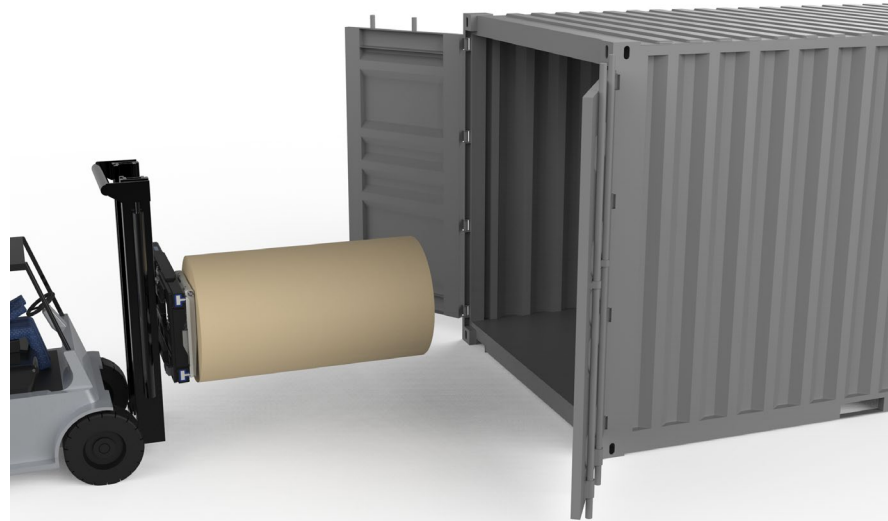


Hang-on attachment for ease of installation

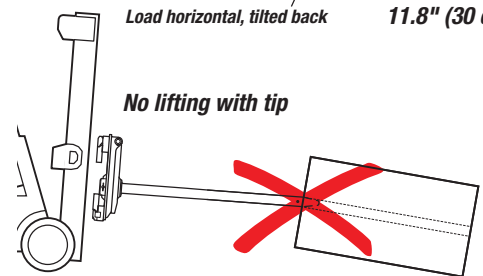
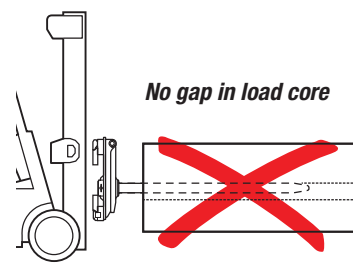
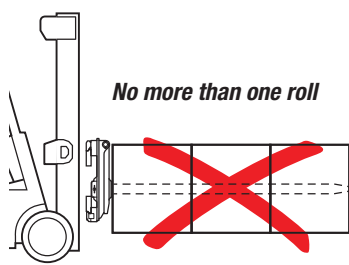
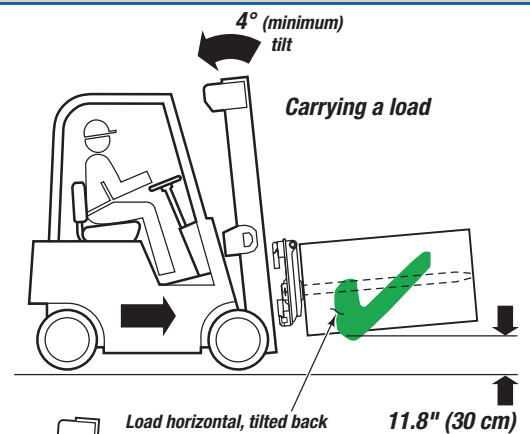
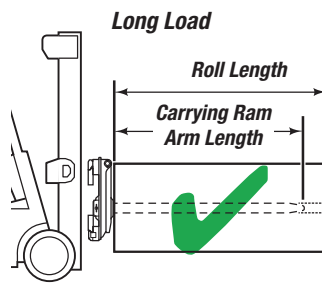
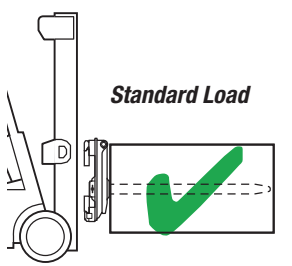


Heavy-duty, durable construction providing long lasting durability.

To prevent damage due to slippage and movement, the second reel or roll can be placed on a wooden cradle adjacent to the first. Successive reels or rolls can be positioned in this way, with air cushions placed between the rows. When configured in this manner, up to eight reels or rolls can be stowed in an ISO 40' shipping container. **To achieve maximum efficiency when loading in this manner, the reels or rolls must be picked up from the end through the core so that they can be placed as close to the container walls as possible.**



Operation Handling Tips





PRODUCT OVERVIEW OF CARRYING RAM ATTACHMENT WITH ULTRA HIGH-CAPACITY TO HANDLE PAPER ROLLS FROM THE CORE

MODEL	Capacity (kg)	Load Center (mm)	Ram Arm Diameter (mm)	Core Diameter (mm)	Core Nominal Diameter (inches)	Ram Arm Length (mm)	Frame Width (mm)	Sideshifting Stroke (mm)	Minimum Roll Diameter (mm)	Mounting Class ISO 2328	Mass (kg)	Effective Thickness (mm)	HCG (mm)	VCG (mm)
20C-CRW-2A-2000	2000	1000	67	75-77	3	1400	1850	625+625	900	2A	720	222	135	330
30C-CRW-3A-3000	3000	1400	92	100-103	4	2000	1850	575+575	1000	3A	910	232	201	360
40C-CRW-4A-4000	4000	1400	92	100-103	4	2000	1850	575+575	1100	4A	940	232	212	360
20C-CRO-2A-2000	2000	1000	67	75-77	3	1400	510	N/A	500	2A	195	183	221	227
30C-CRO-3A-3000	3000	1400	92	100-103	4	2000	620	N/A	800	3A	365	200	360	260
40C-CRO-4A-4000	4000	1400	92	100-103	4	2000	620	N/A	800	4A	425	210	340	280

Additional variations and ram lengths are available upon request.



Cascade Corporation • PO Box 20187 • Portland, OR 97294-0187 • USA • 800 CASCADE (227.2233) • Tel 503.669.6257 • Fax 800.693.3768 • Fax 503.669.6367
 Cascade Canada Ltd. • 5570 Timberlea Blvd. • Mississauga, Ontario L4W 4M6 • Canada • 800.380.2272 • Tel 905.629.7777 • Fax 905.629.7785

