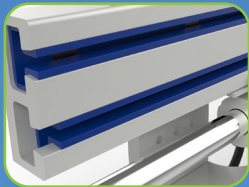
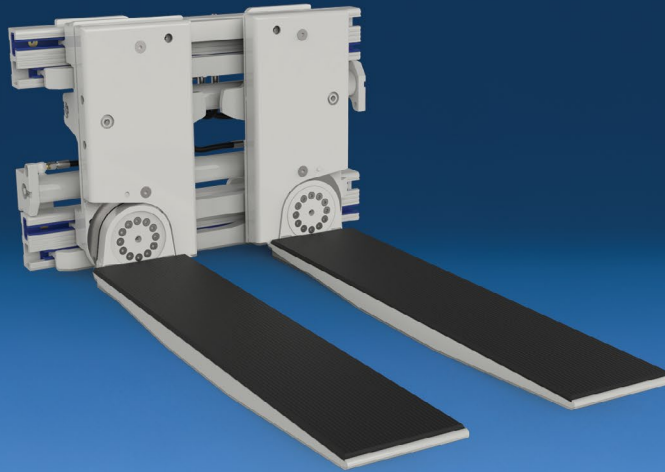
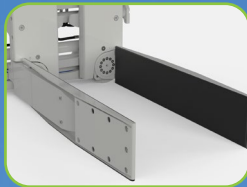


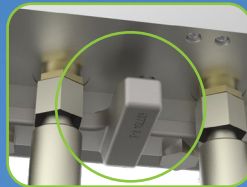
# A Two-in-One Attachment Used For Clamping and Pallet Handling.



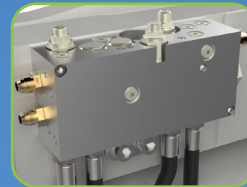
No maintenance bearings with 10,000 hour warranty



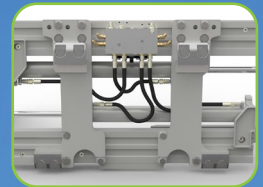
Arms in vertical position for clamping



True centering key for precise and secure mounting



Standard adjustable pressure relief in clamp and sideshift functions



Industry leading visibility through frame

## APPLICATIONS

Cascade's TURNAFORK™ is used in a variety of manufacturing, receiving, warehousing and shipping environments that require both clamping and pallet handling. Rotate the arms to the vertical position for clamping or to the horizontal position to handle most types of conventional pallets. Order picking layers of varied product onto a pallet is simplified. In addition to clamp handling of cartons, the versatile TURNAFORK™ is also used for clamping awkward or difficult loads such as large tires.

## J-SERIES FEATURES

**Industry-leading visibility.**

**Efficient hydraulic system which minimizes energy consumption and maximizes performance.**

- Clamp and backhand protection.
- Flow divider for equal arm movement.
- Top-mounted hydraulic cartridges and test port for ease of access and adjustment.

**Sideshift circuit relief optimizes sideshift speed and performance.**

**Rugged design for optimal strength, durability and performance.**

- Center mounted hardened replaceable frame wear segment. (Except for revolving models).
- High strength steel frame.
- Lubrication-free, full length UHMW bearings.
- High strength steel castings.

**Maximum clamp force for secure handling.**

**Designed for convenience and performance.**

- Integrated true centering key for precise and secure installation.
- Available in two pressure offerings to match attachment to truck hydraulic system.

## UNIQUE ARM FEATURES

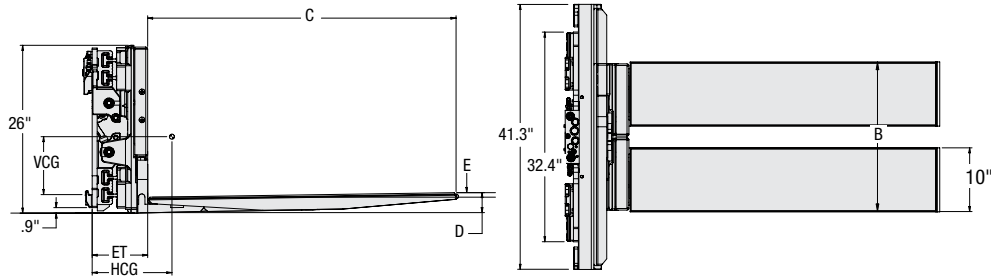
- Replaceable rubber faced arm pads ensures a secure grip.
- Mechanical (CTS) arm rotation.  
OR
- Hydraulic (HTS) arm rotation.

## OPTIONS

- Special frame widths and opening ranges.
- High pressure and low pressure hydraulics systems.
- Basic, sideshifting and revolving (360°) models available.
- Other arm dimensions.
- Independent arm control.
- Regeneration valve (faster opening speed for low flow electric trucks).
- External sideshifter mounting.
- Full width bolt-on wear strips to protect the frame.
- Valve guard.
- Factory installed load backrest.
- Bumper/Cylinder cover.
- Quick Disconnect Mounting Kit.

**Mechanical-Positionable TURNAFORK™**

Forks are rotated 90° from carry to clamp position by closing fully. Closing a second time returns the forks to the carry position.

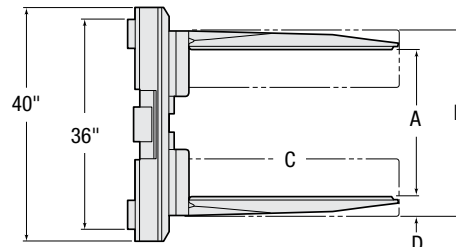


Catalog Order No.	Capacity@ 24" (600 mm) Load Center		Clamp Opening Range ②	Fork Opening Range ①	Mtg. Class	Arm Length C	Weight		Effective Thickness ET	Horizontal Ctr. of Gravity HCG	Vertical Ctr. of Gravity VCG	Arm Thickness D	Arm Thickness (w/Toe-In) E
	lbs	kg					lbs	kg					
22J-CTS-2A-0220	4,200	1,900	20.5"-64.3"	27.3"-71.2"	II	36"	1,188	540	9.1"	9.3"	6.7"	2.4"	3.4"
22J-CTS-2A-0225	4,200	1,900	20.4"-64.3"	27.3"-71.2"	II	42"	1,227	558	9.3"	10.6"	6.5"	2.4"	3.4"
22J-CTS-2A-0230	4,200	1,900	20.4"-64.2"	27.3"-71.2"	II	48"	1,299	591	9.1"	11.9"	6.3"	2.4"	3.4"
22J-CTS-3A-0235	4,200	1,900	20.5"-64.3"	27.3"-71.2"	III	36"	1,238	563	9.3"	8.7"	7.1"	2.4"	3.4"
22J-CTS-3A-0240	4,200	1,900	20.4"-64.3"	27.3"-71.2"	III	42"	1,285	584	9.1"	10.0"	6.8"	2.4"	3.4"
22J-CTS-3A-0245	4,200	1,900	20.4"-64.2"	27.3"-71.2"	III	48"	1,335	607	9.3"	11.5"	6.5"	2.4"	3.4"

- Tire handling forks available.
- Modified fork/pad size available.
- Revolving model available, consult Cascade.
- Valve configuration is RH Clamp, LH Sideshift (view from operator). Optional reverse valve configuration available.
- Quick Disconnect mounting available.

**Hydraulically-Positionable TURNAFORK™**

Hydraulically positionable forks allow positioning at 45° for 'cradling' loads or any other angle. Requires two truck auxiliary functions plus a solenoid valve which is supplied with the attachment. Advise voltage when ordering.



Catalog Order No.	Capacity@ 24" (600 mm) Load Center		Clamp Opening Range ②	Fork Opening Range ①	Mtg. Class	Arm Length C	Weight		Effective Thickness ET	Horizontal Ctr. of Gravity HCG	Vertical Ctr. of Gravity VCG	Arm Thickness D	Arm Thickness (w/Toe-In) E
	lbs	kg					lbs	kg					
22J-HTS-2A-0220	4,200	1,900	21"-73" ②	27.8"-80.6"	II	36"	1,266	576	8.9"	9.1"	8.5"	2.4"	3.6"
22J-HTS-2A-0225	4,200	1,900	21"-73" ②	27.8"-80.6"	II	42"	1,314	597	8.9"	10.4"	8.1"	2.4"	3.6"
22J-HTS-2A-0230	4,200	1,900	21"-73" ②	27.8"-80.6"	II	48"	1,364	620	8.9"	11.8"	7.8"	2.4"	3.6"
22J-HTS-2A-0235	4,200	1,900	21"-73" ②	27.8"-80.6"	II	60"	1,461	623	8.9"	14.8"	7.2"	2.4"	3.6"
22J-HTS-3A-0240	4,200	1,900	21"-73" ②	27.8"-80.6"	III	36"	1,303	592	10.4"	8.8"	8.5"	2.4"	3.6"
22J-HTS-3A-0245	4,200	1,900	21"-73" ②	27.8"-80.6"	III	42"	1,351	614	10.4"	10.1"	8.2"	2.4"	3.6"
22J-HTS-3A-0250	4,200	1,900	21"-73" ②	27.8"-80.6"	III	48"	1,401	637	10.4"	11.5"	7.9"	2.4"	3.6"
22J-HTS-3A-0255	4,200	1,900	21"-73" ②	27.8"-80.6"	III	60"	1,499	681	10.4"	14.4"	7.3"	2.4"	3.6"

- ① Out to Out.
- ② Published opening range limits nominal clamp dimensions only and may not accommodate loads with same or close to same dimension. Consult Cascade for further assistance.

- ▶ Solenoid controls arm rotation.
- ▶ Valve configuration is RH Clamp, LH Sideshift (view from operator). Optional reverse valve configuration available.
- ▶ Quick Disconnect mounting available.

