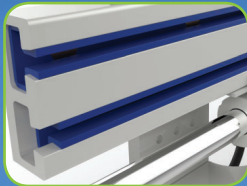
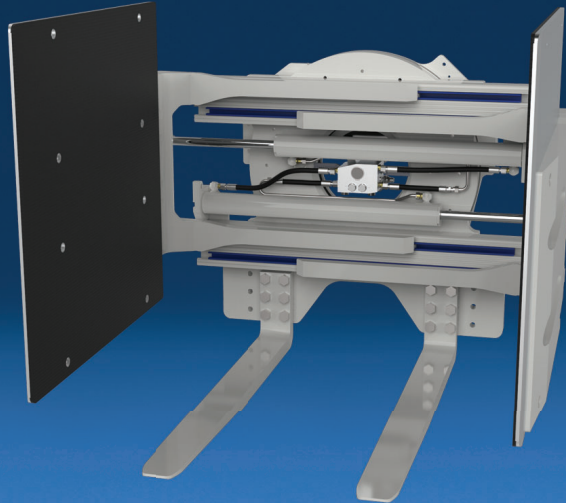


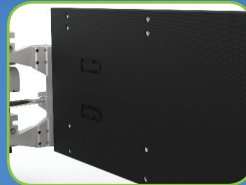
Efficiently Clamp and Rotate Your Bulk Box Containers



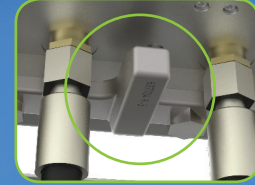
No maintenance bearings with 10,000 hour warranty



Frame bumper protect hydraulics



Rubber faced contact pad ensures a secure grip



True centering key for precise and secure mounting

APPLICATIONS

Bulk Box Handlers are versatile attachments used to handle produce, piece parts, and other items where a box attached to a pallet requires support of multipurpose arms for rotating and dumping.

J-SERIES FEATURES

Industry-leading visibility.

Efficient hydraulic system which minimizes energy consumption and maximizes performance.

- Clamp and backhand protection.
- Flow divider for equal arm movement.
- Top-mounted hydraulic cartridges and test port for ease of access and adjustment.
- Sideshift circuit relief optimizes sideshift speed and performance.

Rugged design for optimal strength, durability and performance.

- High strength steel frame.
- Lubrication-free, full length UHMW bearings.
- High strength steel castings.
- Maximum clamp force for secure handling.

Designed for convenience and performance.

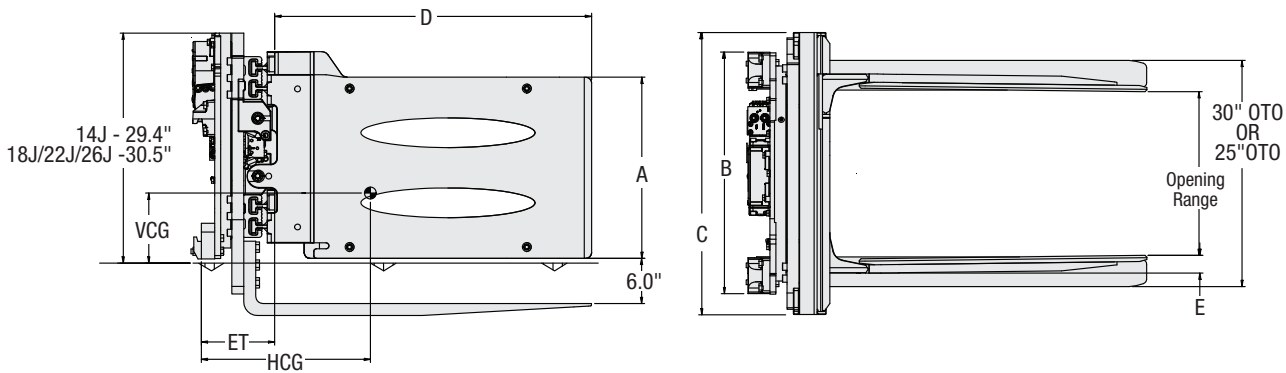
- Integrated true centering key for precise and secure installation.
- Available in two pressure offerings to match attachment to truck hydraulic system.

UNIQUE FEATURES

- Bolt-on forks for ease of change.
- Forks can be mounted in two positions. 30" OTO & 25" OTO.
- Heavy duty rotator with 360° continuous rotation.
- Regenerative hydraulic valve is standard and offers optimal arm speed.

OPTIONS

- Special frame widths and opening ranges.
- High pressure and low pressure hydraulics systems.
- Basic, sideshifting and revolving (360°) models.
- Other arm dimensions.
- Fold-up forks.
- Independent arm control.
- Regeneration valve (faster opening speed for low flow electric trucks).
- External sideshifter mounting.
- Valve guard.
- Factory installed load backrest.
- Bumper/Cylinder cover.
- Quick Disconnect Mounting Kit.



360° Rotation

Catalog Order No.	Capacity@ 24" (600 mm) Load Center		Opening Range ①	Mtg. Class	Mtg. Angle	Arm Height	Weight		Hook Spread	Effective Thickness	Horizontal Ctr. of Gravity	Vertical Ctr. of Gravity	Overall Width	Usable Fork/ Arm Length	Fork Size	Arm Thickness
	lbs	kg					lbs	kg								
14J-BBH-2A-0220	2,600	1,200	21.9"-70.7"	II	0°	24"	1,607	731	24.3"	8.5"	13.5"	8.9"	37"	42"	1.6"x3.9"	2.2"
18J-BBH-2A-0220	3,500	1,600	21.6"-70.4"	II	0°	24"	1,871	850	32"	9.7"	12.6"	9.5"	37"	42"	1.6"x3.9"	2.4"
22J-BBH-3A-0220	4,200	1,900	21.7"-70.5"	III	0°	36"	2,043	929	32"	11.2"	13.3"	10.1"	39"	42"	1.6"x3.9"	2.6"
26J-BBH-3A-0220	5,100	2,300	21.4"-71.0"	III	0°	36"	2,327	1,058	32"	11.6"	15.3"	9.7"	41"	42"	2.0"x4.9"	2.4"

① Published opening range limits nominal clamp dimensions only and may not accommodate loads with same or close to same dimension. Consult Cascade for further assistance.

▶ Bulk Box Handlers are built to order. Arm sizes vary and are based on the size of the box. Prices vary accordingly, consult Cascade.

▶ Bolt-on fork configuration available. Consult Cascade for capacity and pricing.

- ▶ Optional body bumper available.
- ▶ Valve configuration is RH Clamp, LH Sideshift (view from operator). Optional reverse valve configuration available.
- ▶ Quick Disconnect mounting available.

When ordering please specify:

- Arm length
- Arm height
- Usable fork length
- Fork spread
- Opening range
- Distance between fork and arm