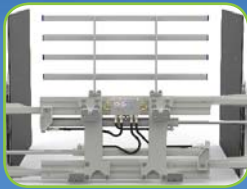
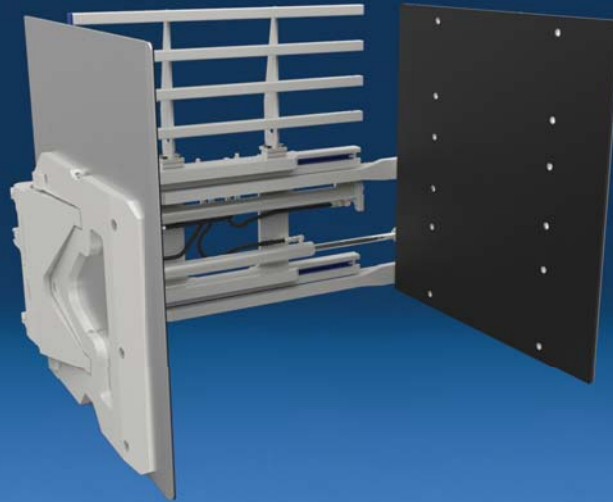


# Increased opening range for handling wider loads



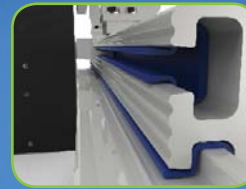
Industry leading visibility through frame



Thin arm profile with leading tapered edge



True centering key for precise and secure mounting



Lube-free, full-length lip over UHMW bearings provide superior durability



Easy access valve with built in clamp protection

## APPLICATIONS

Achieve all the benefits of handling wider loads in your manufacturing and distribution operation with Cascade's J-Series Double Wide Carton Clamps. Allowing efficient handling of a wide range of low-, medium- and high-density products including consumer paper products, appliances, consumer electronics, wine, packaged foods (canned or boxed), chemicals and plastics.

## FEATURES

### Industry-leading visibility.

 **Efficient hydraulic system which minimizes energy consumption and maximizes performance.**

- Clamp and backhand protection.
- Flow divider for equal arm movement.
- Top-mounted hydraulic cartridges and test port for ease of access and adjustment.
- Sideshift circuit relief optimizes sideshift speed and performance.

### Rugged design for optimal strength, durability and performance.

- High strength steel frame.
- Lubrication-free, full length UHMW bearings.
- High strength steel castings.
- Maximum clamp force for secure handling.

### Efficient arm design.

- Thin arm profile for manipulating tight loads between stacks.
- Rubber-faced aluminum contact pads for secure handling of loads.

### Designed for convenience and performance.

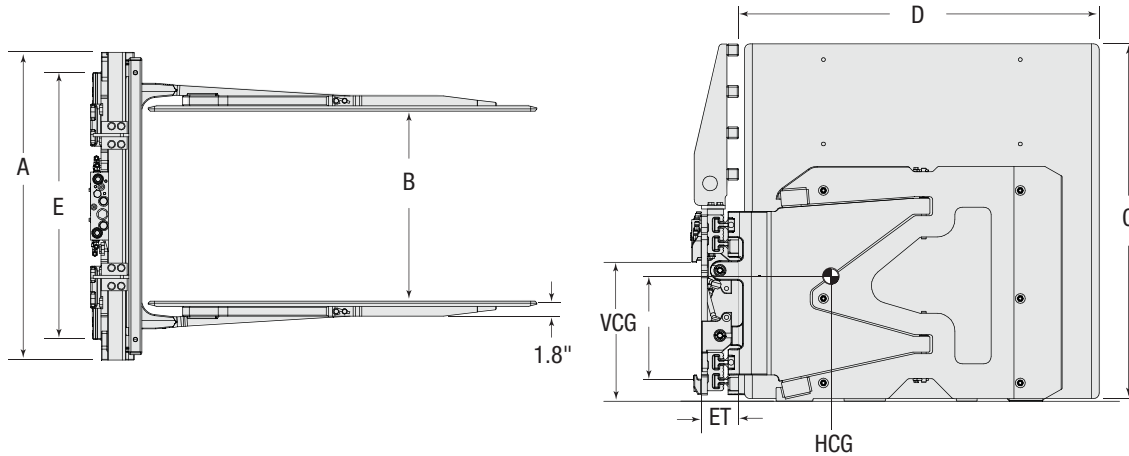
- Integrated true centering key for precise and secure installation.
- Available in two pressure offerings to match attachment to truck hydraulic system.

## OPTIONS

- Custom opening ranges and frame widths.
- Custom arm lengths, heights and pad surfaces. Application-specific contact pads (sizes & surfaces).
- Pallet strips on contact pads for pallet handling.
- Frame bumper for extra protection when handling loose loads.
- Various ISO mounting options including class III and quick-disconnect features.
- Independent arm control.
- Regenerative valve for increased arm speed on low flow electric trucks.
- External sideshift available.
- Alternate valve configurations for left hand or right hand third and fourth function hydraulic installation.
- Application-specific customization.

## DAMAGE REDUCTION OPTIONS:

- Load cushion™
- Tilt control.
- Four-point tester.
- Touch Force Control – TFC™



Catalog Order No.	Capacity @ Load Center		Frame Width		Opening Range ②	Mtg. Class	Weight		Hook Spread ①	Effective Thickness	Horizontal Ctr. of Gravity	Vertical Ctr. of Gravity	Overall Attachment/ Arm Height	Useable Arm Length
	lbs@in	kg@mm	A	B			lbs	kg						
<b>Low Pressure - For trucks delivering up to 2,760 psi of operating pressure.</b>														
14J-CCD-2A-0010	2,500@24	1,137@610	60.0"	24.7"-102.5"	II	1,548	704	32.4"	4.9"	15.9"	13.7"	48.0"	48.0"	
14J-CCD-2A-0020	2,500@24	1,137@610	48.0"	35.0"-102.5"	II	1,490	677	32.4"	4.9"	16.4"	13.7"	48.0"	48.0"	
<b>High Pressure - For trucks delivering over 2,760 psi of operating pressure consult Cascade.</b>														

① Class II Bolt-On mounting is standard. Class III mounting is available (see page 7-1). **Minimum truck carriage width equals hook spread (E).** Quick Disconnect option available at no charge.

② Published opening range limits are nominal clamp dimensions only and clamp may not accommodate loads with same or similar dimension. Consult Cascade for further assistance.

▶ Front lower leading edge pad wear can be addressed by periodic replacement of the factory installed wear tiles. Contact Cascade Parts Department at 888-CASCADE (227-2233) for service kits. Cascade recommends using tilt control with all Carton Clamps.

▶ External Sideshift Available: Consult Cascade  
 Class 2 External sideshift = ET + 25 mm (1.0")  
 Class 3 External sideshift = ET + 38 mm (1.5")

- ▶ All models include an integrated sideshift circuit.
- ▶ Standard valve configuration is with clamp ports on the right and sideshift on the left. Reverse valve configuration optional.
- ▶ Can easily be converted to non-sideshifting by plugging ports on the valve. Clamp requires only 1 auxiliary valve.
- ▶ Attachment capacity should be matched to the derated truck capacity with the attachment installed for most efficient application.

## Hydraulic Flow & Pressure – Hydraulic Functions

Model	Maximum Attachment Operating Pressure psi/bar	Maximum Deliverable Truck Pressure psi/bar	Attachment Pressure Protected Yes/No?	Min-Rec-Max Function 3 (sideshift) gpm	Min-Rec-Max Function 4 (clamp) gpm	Attachment Number of Functions	Truck Auxiliary Valves Required
14J CCD	2,250/155	2760/190	Yes	1-5-10	5-12-16	2	2

▶ If the maximum deliverable truck pressure exceeds maximum clamp or rotate operating pressure and the attachment is not pressure protected, then auxiliary pressure protection is required.