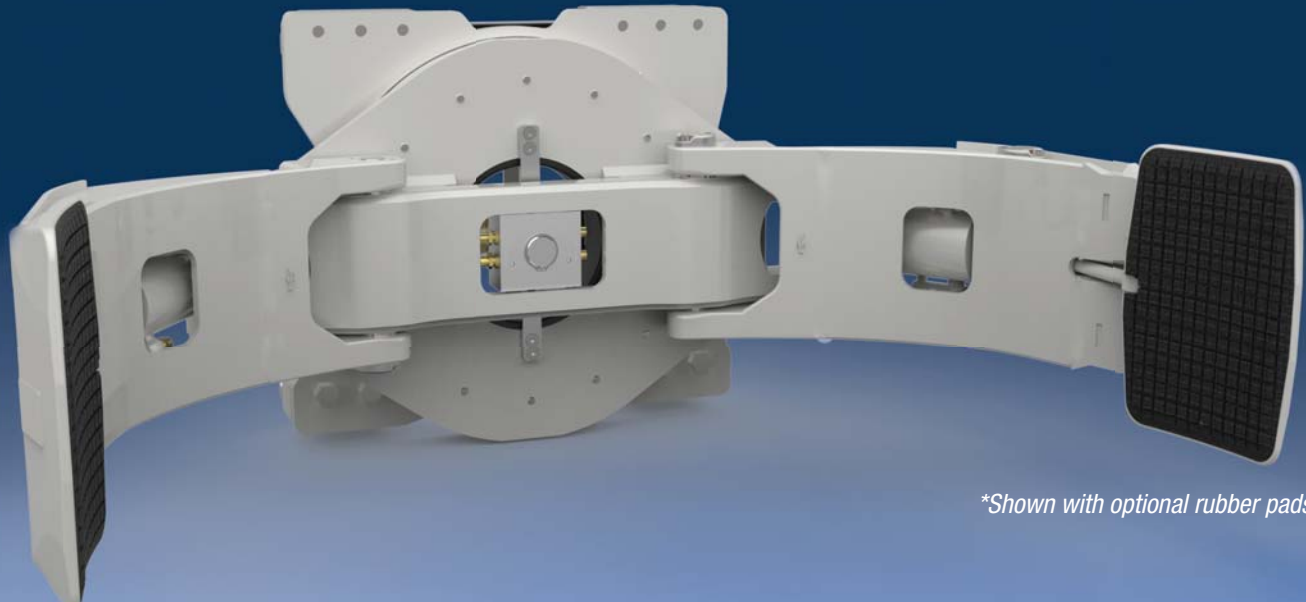


# A Versatile and Compact Roll Clamp Designed For Ultra Light Loads



*\*Shown with optional rubber pads*



Ultra compact frame



Durable rotator gear train



Dependable hydraulics  
leak resistant system



Proven 18H arm design



Wide range of pad  
options available

## APPLICATIONS

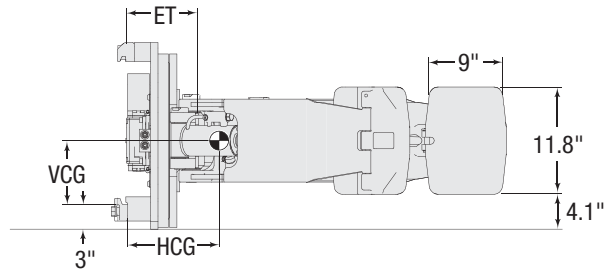
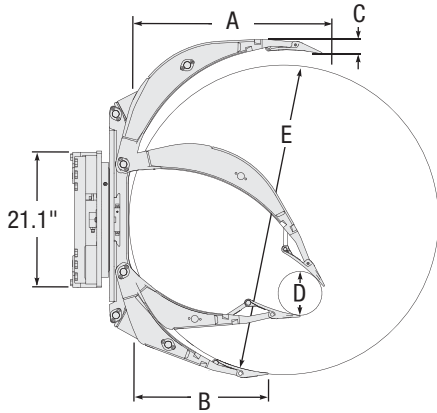
Designed for small printers and converters of fabric, packaging and specialty papers. Lightweight clamp with excellent specifications maximizes capacity on walkie and stand up trucks. Also ideal for handling tires on small lift trucks servicing the aircraft industry.

## FEATURES

- Very thin arm profile and smooth-arm contour eases roll breakout and permits close stacking.
- Proven contact pad shape and surface holds rolls securely and can be lowered to within 4" of ground.
- Positioned Short Arm maintains thin-arm profile over a wide range of roll diameters.
- Excellent visibility over and around clamp.
- Able to handle rolls up to 4" less than max. diameter directly against the bumper for faster handling.
- Continuous 360° rotation and proved durable rotator drive train.
- Frame and hydraulics are optimized for small loads and to maximize speed and capacity on small lift trucks.
- Unitized construction provides structural integrity in arms and frame.
- Pivot bushings are lube-free and provide excellent service life.
- Large pivot pins for extended life.

## OPTIONS

- Fixed Frame/Fixed Short Arm or Fixed Frame/Positioned Short Arm.
- HFC™ - Hydraulic Force Control a hydraulically controlled automatic clamp force system that changes clamp force proportional to the load weight.
- Wide variety of rubber and urethane pads available when additional friction is required.
- Equal length arm model for ease of use in applications where bilge handling is not required.
- 180° Stop Group available which provides stops during rotation to aid in aligning pads to roll.
- Quick-Disconnect lower hooks for fast attachment exchanges.
- Built-In Relief Valve for trucks exceeding 2300 psi/160 bar.
- Low flow (less than 5gpm) rotator motor to maintain high speed rotation
- Optional smaller cylinder for reduced clamp force on small loads.



360° Rotation

Catalog Order No.	Capacity @ Load Center		Roll Range	Mtg. Class	Mtg. Angle	Weight		Effective Thickness	Horizontal Ctr. of Gravity	Vertical Ctr. of Gravity	Long Arm Length	Short Arm Length	Long Arm Thickness
	lbs @ in	kg @ mm				lbs	kg						
<b>Positioned Short Arm / Fixed Frame</b>													
10H-RCP-A000	2,425 @ 21.0"	1,100 @ 534	8"-42"	II	0°	556	253	8.7"	9.7"	7.4"	30.0"	18.3"	3.1"
10H-RCP-A001	2,425 @ 22.6"	1,100 @ 575	8"-45"	II	0°	563	256	8.0"	9.6"	7.4"	30.1"	20.9"	1.8"
10H-RCP-A003	2,200 @ 25.6"	1,000 @ 650	8"-51"	II	0°	595	271	8.0"	10.2"	7.3"	33.9"	23.3"	1.8"
10H-RCP-A005	2,025 @ 27.6"	925 @ 700	8"-55"	II	0°	614	279	8.0"	10.6"	7.3"	36.3"	24.8"	1.8"
10H-RCP-A007	1,875 @ 30.0"	850 @ 762	8"-60"	II	0°	639	290	8.0"	11.1"	7.3"	36.2"	26.4"	1.8"
<b>Fixed Short Arm / Fixed Frame</b>													
10H-RCF-A000	2,425 @ 21.0"	1,100 @ 534	11"-42"	II	0°	551	251	8.7"	9.7"	7.4"	30.0"	18.3"	3.1"
10H-RCF-A001	2,425 @ 22.6"	1,100 @ 575	18"-45"	II	0°	557	253	8.0"	9.6"	7.4"	30.1"	20.9"	1.8"
10H-RCF-A003	2,200 @ 25.6"	1,000 @ 650	20"-51"	II	0°	589	268	8.0"	10.2"	7.3"	33.9"	23.3"	1.8"
10H-RCF-A005	2,025 @ 27.6"	925 @ 700	20"-55"	II	0°	609	277	8.0"	10.6"	7.3"	36.3"	24.8"	1.8"
10H-RCF-A007	1,875 @ 30.0"	850 @ 762	20"-60"	II	0°	635	289	8.0"	11.0"	7.3"	36.2"	26.4"	1.8"

- ▶ Herringbone is standard, other pad types available.
- ▶ All models come standard with 360° rotation. 180° Stop Group available.

- ▶ 0° mounting provides the driver with a vertical reference to aid in aligning pads to roll; i.e. the pads are at the same angle as the mast. 0° mounting must be used when stacking above 220".
- ▶ 2° mounting provides ease in handling rolls in the horizontal (bilge) position.
- ▶ For applications handling loads lighter than 1,000 lbs., contact Cascade for optional low clamp force hydraulics.

ROTATOR SPECIFICATIONS

Model ①	RPM	Flow GPM	Torque in-lbs @2300 psi
10H	6.1	5 GPM	20,860
10H Low Flow	5.2	3 GPM	13,689

① Specify the Low Flow 10H when the truck flow is less than 5 GPM.

HYDRAULIC FLOW & PRESSURE (GPM)

Model	Min. Pressure psi	Max. Pressure psi/bar	Number of Functions	Rotate			Clamp		
				Min	Rec	Max	Min	Rec	Max
10H	500	2,300/160	2	3	5	8	3	5	8
10H Low Flow	500	2,300/160	2	1	3	5	1	3	8

HYDRAULIC FUNCTIONS

Model	Hydraulic Functions	Truck Auxiliary Valves Required
Fixed & Positioned Short Arm	2	2