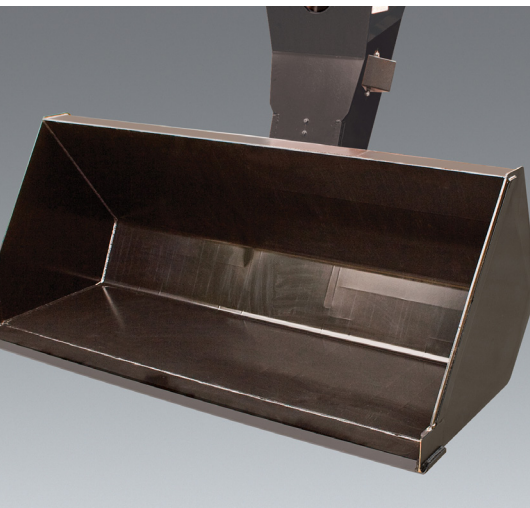
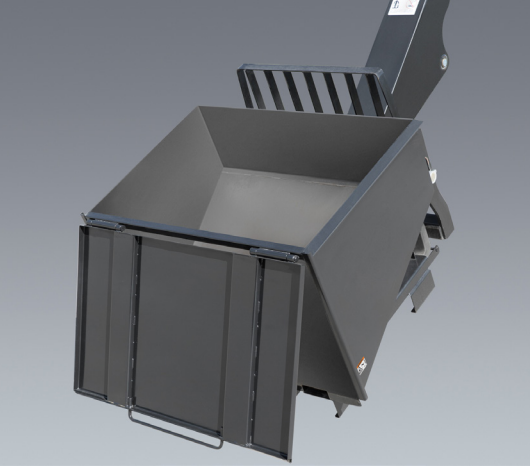




TELEHANDLER ATTACHMENT CATALOG

• PIPE GRAPPLE • TRUSS BOOMS • TRASH HOPPER • WORK PLATFORMS • MATERIAL BUCKETS • SWING CARRIAGES • FORKS

JLG[®]



JLG Genuine Attachments and Forks for JLG®, Gradall, SkyTrak® and Lull Telehandlers

Quick Reference Attachment Guide, By Model 4

CURRENT PRODUCTION MODELS

742/943/1043 8
1055/1075 9
1255 10
1644/1732 11
2733 12
G5-18A 13
SkyTrak T4F 14
SkyTrak 3013 15

CURRENT AND NON-CURRENT ATTACHMENTS

Attachment Catalog/Load Chart Information 17

Carriages

Dual Fork Positioning Carriage 17
 Sheet Material Swing Carriage 19
 Side-Shift Carriage 20
 Side-Tilt Carriage 22
 Standard Carriage 26
 Swing Carriage 31
 Tower Carriage 34

Auger 37

Bale Clamp 39

Buckets

4-in-1 Bucket 40
 Fork Mounted Bucket 41
 Grapple Bucket 43
 Material Bucket 46

Coupler Mounted Lifting Hook 50

Fork Mounted Lifting Hook 52

Fork Mounted Work Platform 55

Fork Mounted Extendable Truss Boom 58

Material Handling Arm 59

Pipe Grapple 61

Round Fork Tines 62

Sheet Material Adapter 63

Sweeper 66

Tire Handler 68

Trash Hopper 69

Truss Boom 71

Quick Coupling Assembly 74

FORKS

Forks - Pallet, Cubing, Drywall and Lumber 75

Fork Pins/Bars 84

Fork Extensions 85

Fork Caliper 87

To Place an Order

- Online: onlineexpress2.jlg.com
- Call: 1-877-JLG-LIFT (1-877-554-5438)
- Fax: 1-800-733-8939
- Email: partsprograms@jlg.com



QUICK REFERENCE ATTACHMENT GUIDE



		Dual Fork Positioning Page 16	Sheet Material Swing Page 19	Side-Shift Page 19	Side Tilt Page 21	Standard Page 25	Swing Page 30	Tower Page 33	Auger Page 36	Bale Clamp Page 38	4 in 1 Bucket Page 39	Fork Mounted Bucket Page 40	Grapple Bucket Page 42	Material Bucket Page 45	Coupler Mounted Lifting Hook Page 49
JLG															
CURRENT	742	•	•	•	•	•	•	•			•	•	•	•	•
	943	•	•	•	•	•	•	•			•	•	•	•	•
	1043	•	•	•	•	•	•	•			•	•	•	•	•
	1055	•	•	•	•	•	•	•			•	•	•	•	•
	1075	•	•	•	•	•	•	•			•	•	•	•	•
	1255	•	•	•	•	•	•	•			•	•	•	•	•
	1644	•								•		•	•	•	•
	1732	•								•		•	•	•	•
	G5-18A	•							•			•	•	•	•
NON-CURRENT	642	•					•				•	•	•	•	•
	619A			•	•	•				•	•	•	•	•	•
	723A			•	•	•				•	•	•	•	•	•
	G5-19A			•	•	•					•	•	•	•	•
	G6-23A			•	•	•					•	•	•	•	•
	G6-42A	•		•	•	•	•	•			•	•	•	•	•
	G9-43A	•		•	•	•	•	•			•	•	•	•	•
	G10-43A	•		•	•	•	•	•			•	•	•	•	•
	G10-55A	•		•	•	•	•	•			•	•	•	•	•
	G12-55A	•		•	•	•	•	•			•	•	•	•	•
	G15-44A			•	•	•	•	•				•	•	•	•
	TF6-42			•	•	•	•	•					•	•	•
SkyTrak															
	6036	•		•	•	•	•	•	•			•	•	•	•
	6042	•		•	•	•	•	•	•			•	•	•	•
	8042	•		•	•	•	•	•	•			•	•	•	•
	10042	•		•	•	•	•	•	•			•	•	•	•
	10054	•		•	•	•	•	•	•			•	•	•	•
	12054	•		•	•	•	•	•	•			•	•	•	•
	NON-CURRENT	4266				•	•	•							•
4270					•	•	•							•	
4290					•	•	•							•	
5028					•	•	•							•	

Not all versions of each model will support all of the noted attachments. Please verify that your exact machine can support the desired attachment by checking the detailed attachment page prior to placing an order

QUICK REFERENCE ATTACHMENT GUIDE

		Fork Mounted Lifting Hook Page 51	Fork Mounted Platform Page 54	Fork Mounted Truss Boom Page 57	Material Handling Arm Page 58	Pipe Grapple Page 60	Round Fork Tines Page 61	Sheet Material Adapter Page 62	Sweeper Page 65	Trash Hopper Page 67	Truss Boom Page 69	Skid Steer Adapter Page 72	Forks Page 71	Fork Extensions Page 81
JLG														
CURRENT	742	•	•	•	•				•	•	•		•	•
	943	•	•	•	•				•	•	•		•	•
	1043	•	•	•	•				•	•	•		•	•
	1055	•	•	•	•	•			•	•	•		•	•
	1075	•	•	•	•	•			•	•	•		•	•
	1255	•	•	•	•	•			•	•	•		•	•
	1644	•	•			•				•	•		•	
	1732	•	•			•				•	•		•	
	G5-18A	•	•				•			•		•	•	
NON-CURRENT	642	•	•	•	•				•	•	•		•	•
	619A	•	•				•				•	•	•	
	723A	•	•				•				•	•	•	
	G5-19A	•	•								•	•	•	
	G6-23A	•	•	•							•	•	•	
	G6-42A	•	•	•	•			•	•	•	•		•	•
	G9-43A	•	•	•	•			•	•	•	•		•	•
	G10-43A	•	•	•	•			•	•	•	•		•	•
	G10-55A	•	•	•	•	•		•	•	•	•		•	•
	G12-55A	•	•	•	•	•		•	•	•	•		•	•
	G15-44A	•	•								•		•	•
	TF6-42		•					•			•		•	
	SkyTrak													
NON-CURRENT	6036	•	•	•	•			•	•	•	•		•	•
	6042	•	•	•	•			•	•	•	•		•	•
	8042	•	•	•	•			•	•	•	•		•	•
	10042	•	•	•	•	•		•	•	•	•		•	•
	10054	•	•	•	•	•		•	•	•	•		•	•
	12054	•	•	•	•	•		•	•	•	•		•	•
	4266	•	•					•			•		•	
4270	•	•					•			•		•		
4290	•	•					•			•		•		
5028	•	•					•			•				

Not all versions of each model will support all of the noted attachments. Please verify that your exact machine can support the desired attachment by checking the detailed attachment page prior to placing an order

QUICK REFERENCE ATTACHMENT GUIDE

	Dual Fork Positioning Page 16	Sheet Material Swing Page 19	Side-Shift Page 19	Side Tilt Page 21	Standard Page 25	Swing Page 30	Tower Page 33	Auger Page 36	Bale Clamp Page 38	4 in 1 Bucket Page 39	Fork Mounted Bucket Page 40	Grapple Bucket Page 42	Material Bucket Page 45	Coupler Mounted Lifting Hook Page 49
Lull														
NON-CURRENT	644B-37			.									.	
	644B-42			.	.								.	
	644D-34			.	.								.	
	644E-42	
	844C-42			.	.								.	
	944E-42	
	1044C-42	.												
	1044C-54	.												
	1044C-54 SII	
	6K-37			.	.								.	
	6K-42			.	.								.	
	8K-42			.	.								.	
	10K-42/10K-54			.	.								.	
Gradall														
NON-CURRENT	522D/524D			
	534C-9									
	534C-10			
	534D-6			
	534D-9			
	534D-10			
	534D10-45													
	534D10-55													
	544C									
	544D			
	G6-42P			

Not all versions of each model will support all of the noted attachments. Please verify that your exact machine can support the desired attachment by checking the detailed attachment page prior to placing an order

QUICK REFERENCE ATTACHMENT GUIDE



		Fork Mounted Lifting Hook Page 51	Fork Mounted Platform Page 54	Fork Mounted Truss Boom Page 57	Material Handling Arm Page 58	Pipe Grapple Page 60	Round Fork Tines Page 61	Sheet Material Adapter Page 62	Sweeper Page 65	Trash Hopper Page 67	Truss Boom Page 69	Skid Steer Adapter Page 72	Forks Page 71	Fork Extensions Page 81	
Lull															
NON-CURRENT	644B-37		
	644B-42		
	644D-34		
	644E-42	
	844C-42		
	944E-42	
	1044C-42	.	.										.		
	1044C-54	.	.										.		
	1044C-54 SII	
	6K-37											.		.	
	6K-42											.		.	
	8K-42											.		.	
	10K-42/10K-54											.		.	
Gradall															
NON-CURRENT	522D/524D		
	534C-9	.	.										.		
	534C-10		
	534D-6		
	534D-9		
	534D-10		
	534D10-45		.												
	534D10-55		.												
	544C											.		.	
	544D	
	G6-42P	

Not all versions of each model will support all of the noted attachments. Please verify that your exact machine can support the desired attachment by checking the detailed attachment page prior to placing an order



PART NUMBER	ATTACHMENT
1170021	Carriage, 50" Std., 12K lb.
1170024	Carriage, 60" Std., 12K lb.
1001211516	Carriage, 72" Std., 15K lb.
7301295	Carriage, 50" Dual Fork Positioning, 10K lb.
1001233383	Carriage, 50" Side Tilt, 12K lb.
1001233384	Carriage, 60" Side Tilt, 12K lb.
1001233385	Carriage, 72" Side Tilt, 12K lb.
1001242644	Carriage, 50" Side Shift, 12K lb.
1001095418	Carriage, 72" 90 Deg. Swing, 10K lb.
1001108668	Carriage, 50" Standard W/ 8' Mast, 4.5K lb.
1001218255	Carriage, 50" Elec. Side Tilt W/ 8' Mast, 4.5K lb.
1001100967	Truss Boom, 3' With Winch, 4K lb.
1001099902	Truss Boom, 12' W/O Winch, 2K lb.
1001099351	Truss Boom, 12' With Winch, 2K lb.
1001099901	Truss Boom, 15' W/O Winch, 2K lb.
1001176515	Truss Boom, Adjustable Material Handler
1001100822	Bucket, 72" 1.0 CU YD
1001100823	Bucket, 96" 1.5 CU YD
1001100824	Bucket, 102" 2.0 CU YD
0930020	Bucket, 96" Grapple
1001202904	Sweeper, 0.53 CU YD
1001207606	Hook, Lifting

COUPLER MOUNTED ATTACHMENTS

PART NUMBER	ATTACHMENT
1001230241	Truss Boom, Low Profile, Adjustable
1001195970	Bucket, 60" 1.3 CU YD
1001238566	Hopper, Trash
10012386535	Work Platform, 4'x8' Domestic 1K lb.
1001103730	Work Platform, 4'x8' ISO 1K lb.
1001103736	Work Platform, 4'x8' French 1K lb.
1001097205	Hook, Crane

PART NUMBER	ATTACHMENT
1001094134	Fork Stops, Kit of 4
1001137512	Fork Extension, 90"

PART NUMBER	ATTACHMENT
2340045	Fork, Pallet, 2.4"x4"x48"
2340038	Fork, Pallet, 2.4"x5"x48"
7301408	Fork, Pallet, 2.4"x4"x48" (use w/ DFP carriage)
1001227379	Fork, Pallet, 2.4"x4"x60" (use w/ DFP carriage)
1001232355	Fork, Pallet, 2.36"x5"x72"
1001099457	Fork, Lumber, 1.6"x5.9"x60"
1001097110	Fork, Lumber, 2"x7"x60"
2340039	Fork, Lumber, 2.36"x6"x60"
1001092391	Fork, Dual Taper, 2"x6"x72"
2340037	Fork, Block, 2"x2"x48"

FORK MOUNTED ATTACHMENTS

SPECIAL APPLICATIONS

FORKS

NOTES:

· Use only JLG approved attachments with proper material handler model/attachment load capacity charts displayed in the operator's cab.

· Never use your attachment as a work platform or personnel carrier.

Can't find the attachment you are looking for? Contact your JLG Aftermarket Parts representative at 1-877-JLG-LIFT or visit www.jlg.com.



PART NUMBER	ATTACHMENT
1001146084	Carriage, 50" Std, 12K lb., W/ Lift Lug
1001146086	Carriage, 60" Std, 12K lb., W/ Lift Lug
1001193794	Carriage, 72" Std, 12K lb., W/ Lift Lug
7301295	Carriage, 50" Dual Fork Positioning, 10K lb.
1170054	Carriage, 50" Side Tilt, 10K lb.
1001101956	Carriage, 60" Side Tilt, 10K lb.
1170057	Carriage, 72" Side Tilt, 10K lb.
1001242644	Carriage, 50" Side Shift, 12K lb.
1001095418	Carriage, 72" 90 Deg. Swing, 10K lb.
1001104992	Carriage, 72" 180 Deg. Swing, 8K lb.
1001108668	Carriage, 50" Standard W/ 8' Mast, 4.5K lb.
1001218255	Carriage, 50" Elec. Side Tilt W/ 8' Mast, 4.5K lb.
1001100967	Truss Boom, 3' With Winch, 4K lb.
1001099902	Truss Boom, 12' W/O Winch, 2K lb.
1001099351	Truss Boom, 12' With Winch, 2K lb.
1001099901	Truss Boom, 15' W/O Winch, 2K lb.
1001176515	Truss Boom, Adjustable Material Handler
1001100822	Bucket, 72" 1.0 CU YD
1001100823	Bucket, 96" 1.5 CU YD
1001100824	Bucket, 102" 2.0 CU YD
0930020	Bucket, 96" Multi-Purpose
1001202904	Sweeper, 0.53 CU YD
1001207606	Hook, Lifting
1001142247	Grapple, Pipe

COUPLER MOUNTED ATTACHMENTS

PART NUMBER	ATTACHMENT
1001230241	Truss Boom, Low Profile, Adjustable
1001195970	Bucket, 60" 1.3 CU YD
1001238566	Hopper, Trash
10012386535	Work Platform, 4'x8' Domestic 1K lb.
1001103730	Work Platform, 4'x8' ISO 1K lb.
1001103736	Work Platform, 4'x8' French 1K lb.
1001097205	Hook, Crane

PART NUMBER	ATTACHMENT
1001094134	Fork Stops, Kit of 4
1001137512	Fork Extension, 90"

PART NUMBER	ATTACHMENT
2340045	Fork, Pallet, 2.4'x4'x48"
2340038	Fork, Pallet, 2.4'x5'x48"
7301408	Fork, Pallet, 2.4'x4'x48" (use w/ DFP carriage)
1001227379	Fork, Pallet, 2.4'x4'x60" (use w/ DFP carriage)
1001232355	Fork, Pallet, 2.36'x5'x72"
1001099457	Fork, Lumber, 1.6'x5.9'x60"
1001097110	Fork, Lumber, 2'x7'x60"
2340039	Fork, Lumber, 2.36'x6'x60"
1001092391	Fork, Dual Taper, 2'x6'x72"
2340037	Fork, Block, 2'x2'x48"

FORKS

NOTES:

- Use only JLG approved attachments with proper material handler model/attachment load capacity charts displayed in the operator's cab.
- Never use your attachment as a work platform or personnel carrier.

Can't find the attachment you are looking for? Contact your JLG Aftermarket Parts representative at 1-877-JLG-LIFT or visit www.jlg.com.



PART NUMBER	ATTACHMENT
1001146084	Carriage, 50" Std., 12K lb., W/ Lift Lug
1001146086	Carriage, 60" Std., 12K lb., W/ Lift Lug
1001193794	Carriage, 72" Std., 12K lb., W/ Lift Lug
1001189211	Carriage, 50" Dual Fork Positioning, 12K lb.
1170054	Carriage, 50" Side Tilt, 10K lb.
1001101956	Carriage, 60" Side Tilt, 10K lb.
1170057	Carriage, 72" Side Tilt, 10K lb.
1001242644	Carriage, 50" Side Shift, 12K lb.
1001095418	Carriage, 72" 90 Deg. Swing, 10K lb.
1001104992	Carriage, 72" 180 Deg. Swing, 8K lb.
1001108668	Carriage, 50" Standard W/ 8' Mast, 4.5K lb.
10012188255	Carriage, 50" Elec. Side Tilt W/ 8' Mast, 4.5K lb.
1001100967	Truss Boom, 3' With Winch, 4K lb.
1001099902	Truss Boom, 12' W/O Winch, 2K lb.
1001099351	Truss Boom, 12' With Winch, 2K lb.
1001099901	Truss Boom, 15' W/O Winch, 2K lb.
1001176515	Truss Boom, Adjustable Material Handler
1001100822	Bucket, 72" 1.0 CU YD
1001100823	Bucket, 96" 1.5 CU YD
1001100824	Bucket, 102" 2.0 CU YD
0930020	Bucket, 96" Multi-Purpose
1001202904	Sweeper, 0.53 CU YD
1001207606	Hook, Lifting
1001142247	Grapple, Pipe

COUPLER MOUNTED ATTACHMENTS

PART NUMBER	ATTACHMENT
1001230241	Truss Boom, Low Profile, Adjustable
1001195970	Bucket, 60" 1.3 CU YD
1001238566	Hopper, Trash
10012386535	Work Platform, 4'x8' Domestic 1K lb.
1001103730	Work Platform, 4'x8' ISO 1K lb.
1001103736	Work Platform, 4'x8' French 1K lb.
1001097205	Hook, Crane

PART NUMBER	ATTACHMENT
1001094134	Fork Stops, Kit of 4
1001137512	Fork Extension, 90"

PART NUMBER	ATTACHMENT
2340038	Fork, Pallet, 2.4'x5'x48"
1001232355	Fork, Pallet, 2.36'x5'x72"
1001227382	Fork, Pallet, 2.36'x5'x60"
1001097110	Fork, Lumber, 2'x7'x60"
2340039	Fork, Lumber, 2.36'x6'x60"
1001099457	Fork, Lumber, 1.6'x5.9'x60"
2340037	Fork, Block, 2'x2'x48"
1001092391	Fork, Dual Taper, 2'x6'x72"

FORKS

NOTES:

· Use only JLG approved attachments with proper material handler model/attachment load capacity charts displayed in the operator's cab.

· Never use your attachment as a work platform or personnel carrier.

Can't find the attachment you are looking for? Contact your JLG Aftermarket Parts representative at 1-877-JLG-LIFT or visit www.jlg.com.



PART NUMBER	ATTACHMENT
1001183447	Carriage, 60" Std., 16.8k
1001214415	Carriage, 72" Std., 16.8k
1001192339	Carriage, 87" Std., 16.8k
1001192342	Carriage, 72" Dual Fork Positioning, 16.8k
1001192344	Carriage, 72" Side Shift W/ Dual Fork Positioning, 16.8k
1001192614	Bucket, Multi-Purpose, 94", 2.6 CU YD
1001192615	Bucket, General Purpose, 94", 2.6 CU YD
1001192616	Bucket, Light Material, 94", 5.2 CU YD
1001192617	Bucket, Grapple, 94", 2.6 CU YD
1001228427	Bucket, Multi-Purpose, 94", 13 CU YD
1001223435	Bucket, Grapple, 94", 17 CU YD
1001192723	Truss Boom, Adjustable Material Handler
1001192649	Clamp, Round Bale
1001192650	Clamp, Square Bale
1001192722	Grapple, Pipe
1001192707	Handler, Tire *
1001192734	Handler, Log
1001192735	Handler, Steel Coil
1001192702	Winch
1001192700	Hook, Lifting

*The Tire Handler attachment only fits the 1732 Model. It is **NOT** available for the 1644 model.

PART NUMBER	ATTACHMENT
1001195970	Bucket, 60" 1.3 CU YD
1001193803	Hook, Lifting
1001238653S	Work Platform, 4'x8' Domestic 1K lb.
1001238566	Hopper, Trash

PART NUMBER	ATTACHMENT
1001196778	Fork Transport Latches

PART NUMBER	ATTACHMENT
1001196949	Fork, Pallet, 2.25"x6"x96"
1001196950	Fork, Pallet, 2.25"x6"x72"
1001196951	Fork, Pallet, 2.25"x6"x60"
1001196952	Fork, Pallet, 2.25"x6"x48"

NOTES:

- Use only JLG approved attachments with proper material handler model/attachment load capacity charts displayed in the operator's cab.
- Never use your attachment as a work platform or personnel carrier.

Can't find the attachment you are looking for? Contact your JLG Aftermarket Parts representative at 1-877-JLG-LIFT or visit www.jlg.com.



	PART NUMBER	ATTACHMENT
CARRIAGES	1001207052	CARRIAGE, STD, 60"
	1001183448	CARRIAGE, STD, 72"
	1001207053	CARRIAGE, STD, 87"
	1001207054	CARRIAGE, SIDE SHIFT, W/DUAL FORK POSITIONING
	1001207055	CARRIAGE, 72", DUAL FORK POSITIONING

	PART NUMBER	ATTACHMENT
FORKS	1001260772	Fork, Pallet, 2.75" x 7.87" x 48"
	1001260773	Fork, Pallet, 2.75" x 7.87" x 60"
	1001260774	Fork, Pallet, 2.75" x 7.87" x 72"
	1001260775	Fork, Pallet, 2.75" x 7.87" x 96"

	PART NUMBER	ATTACHMENT
BUCKETS	1001207058	BUCKET, GENERAL PURPOSE, 2.4M X 3.0M ³
	1001207059	BUCKET, LIGHT MATERIAL, 2.4M X 6.0M ³
	1001207060	BUCKET, GRAPPLE, 94", 3.0M ³

	PART NUMBER	ATTACHMENT
MISCELLANEOUS	1001207061	HYDRAULIC WINCH, 12T
	1001207148	PIPE GRAPPLE
	1001207149	TRUSS BEAM STYLE, 3-4 FIXED POSITIONS
	1001207151	TIRE HANDLER, 7K lb. CAP
	1001207153	LOG CLAMP
	1001207154	ARM, STEEL COIL HANDLING
	1001274115	PLATFORM, FORK MOUNTED, ANSI

NOTES:

- Use only JLG approved attachments with proper material handler model/attachment load capacity charts displayed in the operator's cab.
- Never use your attachment as a work platform or personnel carrier.

Can't find the attachment you are looking for? Contact your JLG Aftermarket Parts representative at 1-877-JLG-LIFT or visit www.jlg.com.



PART NUMBER	ATTACHMENT
COUPLER MOUNTED ATTACHMENTS	1001104435 Carriage, 50" Std, 7k lb.
	1001102331 Carriage, 48" Side Tilt, 7k lb.
	1001242501 Carriage, 48" Side Shift, 5.5k lb.
	1001242506 Carriage, 48" Dual Fork Positioning, 5.5k lb.
	1001242517 Carriage, 48" Dual Tine Baling 2.2k lb.
	1001102323 Bucket, Light Material, 72", 1.7 CU YD
	1001102324 Bucket, Light Material, 72", 1.0 CU YD
	1001102327 Bucket, Manure/Scrap
	1001242509 Lifting Hook, 5.5k lb.
	1001242617 Auger Drive

PART NUMBER	ATTACHMENT
UNIVERSAL QUICK-ATTACH STYLE ATTACHMENTS	1001113038 Carriage, 48" Standard, 5.5k lb.
	1001104009 Carriage, 48" Side Tilt, 5.5k lb.
	1001104025 Carriage, 48" Side Shift, 5.5k lb.
	1001242508 Carriage, 48" Dual Fork Positioning, 5.5k lb.
	1001242511 Carriage, 48" Dual Tine Baling 2.2k lb.
	1001242510 Lifting Hook, 5.5k lb.
	1001242616 Auger Drive

PART NUMBER	ATTACHMENT
FORK MOUNTED ATTACHMENTS	1001097205 Hook, Crane
	1001195970 Bucket, 60" 1.3 CU YD
	1001238566 Hopper, Trash
	10012386535 Work Platform, 4'x8' Domestic 1K lb.

PART NUMBER	ATTACHMENT
SPECIAL APPLICATIONS	1001102332 Adapter, Universal Quick-Attach
	1001162898 Cutting Edge, 72" Bolt-On

PART NUMBER	ATTACHMENT
FORKS	2340037 Fork, Cubing, 2"x2"x48", 1,940 lb.
	1001099457 Fork, Lumber, 1.5"x6"x60", 3,650 lb.
	1001099458 Fork, Pallet, 2"x4"x48", 3,800 lb.



NOTES:

- Use only JLG approved attachments with proper material handler model/attachment load capacity charts displayed in the operator's cab.
- Never use your attachment as a work platform or personnel carrier.

Can't find the attachment you are looking for? Contact your JLG Aftermarket Parts representative at 1-877-JLG-LIFT or visit www.jlg.com.



PART NUMBER	ATTACHMENT
1170021	Carriage, 50" Std, 12k lb.
1170024	Carriage, 60" Std, 12k lb.
1001211516	Carriage, 72" Std, 15k lb.
7301295	Carriage, 50" Dual Fork Positioning, 10k lb.
1001233383	Carriage, 50" Side Tilt, 12k lb.
1001233384	Carriage, 60" Side Tilt, 12k lb.
1001233385	Carriage, 72" Side Tilt, 12k lb.
1001242644	Carriage, 50" Side Shift, 12k lb.
1001095418	Carriage, 72" 90 Deg. Swing, 10k lb.
1001108668	Carriage, 50" Standard W/ 8' Mast, 4.5K lb.
1001100967	Truss Boom, 3' With Winch, 4K lb.
1001099902	Truss Boom, 12' W/O Winch, 2K lb.
1001099351	Truss Boom, 12' With Winch, 2K lb.
1001099901	Truss Boom, 15' W/O Winch, 2K lb.
1001176515	Truss Boom, Adjustable Material Handler
1001100822	Bucket, 72" 10 CU YD
1001100823	Bucket, 96" 15 CU YD
1001100824	Bucket, 102" 2.0 CU YD
0930020	Bucket, 96" Multi-Purpose
1001202904	Sweeper, 0.53 CU YD
1001207606	Hook, Lifting
1001142247	Grapple, Pipe

COUPLER MOUNTED ATTACHMENTS

PART NUMBER	ATTACHMENT
1001230241	Truss Boom, Low Profile, Adjustable
1001195970	Bucket, 60" 1.3 CU YD
1001238566	Hopper, Trash
10012386535	Work Platform, 4'x8' Domestic 1K lb.
1001103730	Work Platform, 4'x8' ISO 1K lb.
1001103736	Work Platform, 4'x8' French 1K lb.
1001097205	Hook, Crane

PART NUMBER	ATTACHMENT
1001100227	Sheet Handler, 3k LB Capacity
1001137512	Fork Extension, 90"

PART NUMBER	ATTACHMENT
2340045	Fork, Pallet, 2.4"x4"x48"
2340038	Fork, Pallet, 2.4"x5"x48"
7301408	Fork, Pallet, 2.4"x4"x48" (use w/ DFP carriage)
1001227379	Fork, Pallet, 2.4"x4"x60" (use w/ DFP carriage)
1001232355	Fork, Pallet, 2.36"x5"x72"
2340039	Fork, Dual Taper, 2.36"x6"x60"
1001092391	Fork, Dual Taper, 2"x6"x72"
2340046	Fork, Dual Taper, 1.75"x7"x60"
2340037	Fork, Block, 2"x2"x48"

FORKS

NOTES:

- Use only JLG approved attachments with proper material handler model/attachment load capacity charts displayed in the operator's cab.
- Never use your attachment as a work platform or personnel carrier.

Can't find the attachment you are looking for? Contact your JLG Aftermarket Parts representative at 1-877-JLG-LIFT or visit www.jlg.com.



	PART NUMBER	ATTACHMENT
COUPLER MOUNTED ATTACHMENTS	1001261158	CARRIAGE, STD. 1050 MM
	1001263392	BUCKET, GENERAL PURPOSE 1400 MM

	PART NUMBER	ATTACHMENT
FORKS	1001262108	FORK, PALLET, 35 x 100 x 1200 MM
	1001262107	FORK, PALLET, 35 x 100 x 1000 MM

	PART NUMBER	ATTACHMENT
UNIVERSAL QUICK-ATTACH STYLE ATTACHMENTS	1001263389	CARRIAGE, STD. 1050 MM
	1001263394	BUCKET, GENERAL PURPOSE 1400 MM



NOTES:

- Use only JLG approved attachments with proper material handler model/attachment load capacity charts displayed in the operator's cab.
- Never use your attachment as a work platform or personnel carrier.

Can't find the attachment you are looking for? Contact your JLG Aftermarket Parts representative at 1-877-JLG-LIFT or visit www.jlg.com.

Attachment Catalog/Load Chart Information

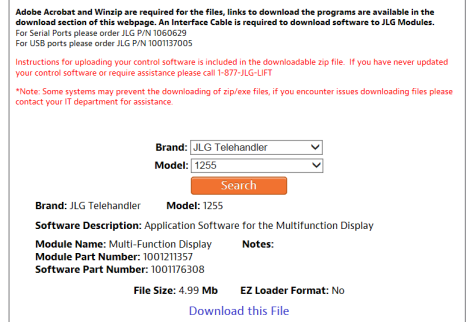
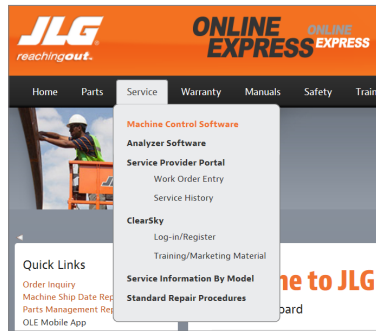
Electronic Load Charts

Electronic load charts are available only for models with optional multi-functional displays - JLG 642, 643, 1043, 1055 and 1255 ONLY.

Please follow step-by-step instructions below to download latest load chart software for in-dash display.

Instructions to Download from Online Express

- Click **Service** in the navigation menu on Online Express
- Click **Machine Control Software**
- Select **Brand** from drop down menu
- Select **Model** from drop down menu
- Click **Search**
- Look for software description relevant to the machine (lifting lug/no lifting lug, ANSI/Metric)
- Click **Download this File**



1001187087 is a reference number only - It is not an orderable load chart part number.

An Interface cable is required to download software to JLG Modules.

The display must have a P2.0 or later software to use the Trash Hopper chart.

For any load charts not listed - Please call the parts contact center for assistance

Important Reminders

- Use only JLG approved attachments with proper material handler model/attachment load capacity charts displayed in the operator's cab.
- Never use your attachment as a work platform or personnel carrier.

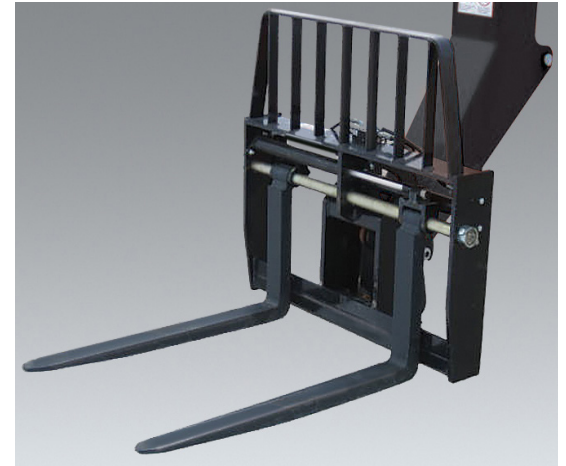
Can't find what you're looking for?
Contact the Aftermarket Parts Team at 877-jlg-lift (877-554-5438) or visit online at www.jlg.com.

Dual Fork Positioning Carriage

The dual fork positioning carriage allows the operator to adjust the width between the forks without leaving the cab.

Features

- Dual fork positioning carriages require auxiliary hydraulics
- Standard up-and-down tilt on horizontal plane
- Dual fork positioning carriage is not compatible with fork mounted attachments
- Fork and Carriage sold separately



Current Production - Dual Fork Positioning Carriages
Available Through JLG Aftermarket Or With New Machine Orders

CARRIAGE SIZE		48 in.	48 in.	50 in.	50 in.	72 in.	72 in.
APPROX. WEIGHT		638 lbs.	695 lbs.	1090 lbs.	1202 lbs.	957 lbs.	1,035 lbs.
PART NO.		1001242506	1001242508	7301295	1001189211	1001282232	1001192342
FORK PIN NO.		70027283	70027283	90451058	70027283	70029054	70028507
MODEL	SN BREAKS	LOAD CHART BOOKLET					
JLG	642, 943, 1043, 1055, 1255 ONLY	Software, Chart Library		1001187087 (Ref No.)			
	742	ALL		1001226012		•	
	943/1043	Without Outriggers		1001212420		•	
		With Outriggers		1001212419		•	
	1055	Prior To 0160074169		1001212227		•	
		0160074169 - Present		1001211156		•	
	1255	Prior To 0160074168		1001212225		•	•
		0160074168 - Present		1001211153		•	•
	1075	ALL		1001259238		•	
	1644	ALL		1001233430			•
	1732	ALL		1001233431			•
G5-18A	with the Universal (skid steer) quick coupler: 0160040809-Present		1001126677		•		
	with Standard Coupler: 0160040809-Present		1001126677	•			
SKYTRAK™	6036	0160069720 - 0160075649, incl 0160065792, 0160065798, 0160065824, 0160069383, 0160069411, 0160075653 & 0160075722		1001199500		•	
		0160075650 - Present, excl 0160075653 & 0160075722		1001211867		•	
	6042	0160069720 - 0160075656, incl 0160065792, 0160065798, 0160065824, 0160069383 & 0160069411		1001199504		•	
		0160075657 - Present		1001211869		•	
	8042	0160069722 - 0160075670, incl 0160065791, 0160065796, 0160065825, 0160065826, 0160069336, 0160069359 & 0160069441		1001199508		•	
		0160075671 - Present		1001211871		•	
	10042	0160069722 - 0160075987, incl 0160065791, 0160065796, 0160065825, 0160065826, 0160069336, 0160069359 & 0160069441		1001199512		•	
		0160075988 - Present		1001211873		•	
	10054	0160069722 - 0160075682, incl 0160065791, 0160065796, 0160065825, 0160065826, 0160069336, 0160069359, 0160069441 & 0160075696		1001199518		•	
		0160075683 - Present, excl 0160075696		1001211875		•	
	12054	ALL		1001245474		•	

NOTES:

- Use only JLG approved attachments with proper material handler model/attachment load capacity charts displayed in the operator's cab.
- Never use your attachment as a work platform or personnel carrier.

Can't find the attachment you are looking for? Contact your JLG Aftermarket Parts representative at 1-877-JLG-LIFT or visit www.jlg.com.

Non-Current Production - Dual Fork Positioning Carriage, JLG
Available Through JLG Aftermarket Parts

CARRIAGE SIZE			50 in.	
APPROX. WEIGHT			1090 lbs.	
INCLUDED FORK LENGTH			48 in.	
PART NO.			7301295	
FORK PIN NO.			90451058	
MODEL	SN BREAKS	LOAD CHART BOOKLET		
JLG	642	ALL	1001212421	.
	G6-42A	0160037722 - 0160040659	1001110401	.
		0160040678 - Present	1001130739	.
	G9-43A	0160037671 - 0160040674, excl 0160040468 & 0160040672	1001110402	.
		0160040675 - Present, incl 0160040468 & 0160040672	1001130708	.
	G10-43A	0160037671 - 0160040674, excl 0160040468 & 0160040672	1001115257	.
		0160040675 - Present, incl 0160040468 & 0160040672	1001130844	.
	G10-55A	0160037690 - Present, incl 0160038505, 0160038507, 0160038324, 016003489 & 0160038493	1001115138	.
	G12-55A	0160037689 - Present	1001115540	.
	G15-44A	Prior To 0160074142	1001194130	.
0160074142 - Present		1001211953	.	

Non-Current Production - Dual Fork Positioning Carriage, SkyTrak
Available Through JLG Aftermarket Parts

CARRIAGE SIZE			50 in.	
APPROX. WEIGHT			1090 lbs.	
INCLUDED FORK LENGTH			48 in.	
PART NO.			7301295	
FORK PIN NO.			90451058	
MODEL	SN BREAKS	LOAD CHART BOOKLET		
SKYTRAK	6036	0160031200 - 0160069719, excl 0160065792, 0160065798, 0160065824, 0160069383 & 0160069411	1001199500	.
	6042	0160031200 - 0160069719, excl 0160065792, 0160065798, 0160065824, 0160069383 & 0160069411	1001199504	.
	8042	0160031235 - 0160069721, excl 0160065791, 0160065796, 0160065825, 0160065826, 0160069336, 0160069359 & 0160069441	1001199508	.
	10042	0160031425 - 0160069721, excl 0160065791, 0160065796, 0160065825, 0160065826, 0160069336, 0160069359 & 0160069441	1001199512	.
	10054	0160031255 - 0160069721, excl 0160065791, 0160065796, 0160065825, 0160065826, 0160069336, 0160069359 & 0160069441	1001199518	.

Non-Current Production - Dual Fork Positioning Carriage, Lull
Available Through JLG Aftermarket Parts

CARRIAGE SIZE			50 in.	
APPROX. WEIGHT			1090 lbs.	
INCLUDED FORK LENGTH			48 in.	
PART NO.			7301295	
FORK PIN NO.			90451058	
MODEL	SN BREAKS	LOAD CHART BOOKLET		
LULL	644E-42	Prior To 0160031500	7300628	.
		0160037900 - Present	1001110410	.
	944E-42	Prior To 0160031500	7301586	.
		0160037794 - Present, incl 0160045421	1001110411	.
	1044C-42	ALL	Consult Factory	
	1044C-54	ALL	Consult Factory	
1044C-54 SII	Prior To 0160037893	1001105327		
	0160037794 - Present	1001110409	.	

NOTES:

- Use only JLG approved attachments with proper material handler model/attachment load capacity charts displayed in the operator's cab.
- Never use your attachment as a work platform or personnel carrier.

Can't find the attachment you are looking for? Contact your JLG Aftermarket Parts representative at 1-877-JLG-LIFT or visit www.jlg.com.

Sheet Material Swing Carriage

The sheet material swing carriage is the ultimate solution for picking and placing sheetrock, drywall, plywood, greenboard, and other sheet materials at the job site.

Features

- Coupler mounted attachment
- 3,000 lb. maximum capacity
- 72 in. maximum fork spread
- 100-degree horizontal tilt
- 180-degree swing capability
- 22 in. maximum load width



Current Production - Sheet Material Swing Carriages
Available Through JLG Aftermarket Or With New Machine Orders

CARRIAGE SIZE			72 in.
APPROX. WEIGHT			1162 lbs.
PART NO.			1001246022S
	MODEL	SN BREAKS	LOAD CHART BOOKLET
JLG	642, 943, 1043, 1055, 1255	Software, Chart Library	1001187087 (Ref No)
	742	ALL	1001226012
	1075	ALL	1001259238



NOTES:

- Use only JLG approved attachments with proper material handler model/attachment load capacity charts displayed in the operator's cab.
- Never use your attachment as a work platform or personnel carrier.

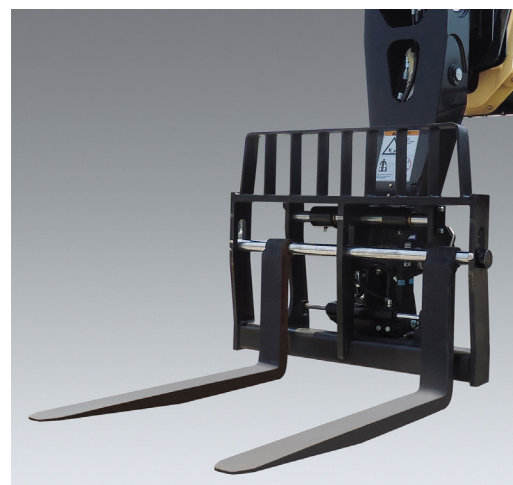
Can't find the attachment you are looking for? Contact your JLG Aftermarket Parts representative at 1-877-JLG-LIFT or visit www.jlg.com.

Side-Shift Carriage

The side-shift carriage allows the operator to move the load left or right for precise placement.

Features

- Side-shift carriages require auxiliary hydraulics
- Standard up-and-down tilt on horizontal plane



Current Production - Side-Shift Carriages
Available Through JLG Aftermarket Or With New Machine Orders

CARRIAGE SIZE			48 in.	48 in.	48 in.	72 in.
APPROX. WEIGHT			751 lbs.	768 lbs.	930 lbs.	1256 lbs.
PART NO.			1001242501	1001104025*	1001242644	1001192344
FORK PIN NO.			70029504	70022105	N/A	N/A
MODEL	SN BREAKS	LOAD CHART BOOKLET				
JLG	642, 943, 1043, 1055, 1255 ONLY	Software, Chart Library	1001187087 (Ref No.)			
	742	ALL	1001226012		•	
	943/1043	Without Outriggers	1001212420		•	
		Without Outriggers	1001212419		•	
	1055	Prior To 0160074169	1001212227		•	
		0160074169 - Present	1001211156		•	
	1255	Prior To 0160074168	1001212225		•	
		0160074168 - Present	1001211153		•	
	1075	ALL	1001259238		•	
	1644	ALL	1001233430			•
1732	ALL	1001233431			•	
SKYTRAK T4F	6036	0160069720 - 0160075649, incl 0160065792, 0160065798, 0160065824, 0160069383, 0160069411, 0160075653 & 0160075722	1001199500		•	
		0160075650 - Present, excl 0160075653 & 0160075722	1001211867		•	
	6042	0160069720 - 0160075656, incl 0160065792, 0160065798, 0160065824, 0160069383 & 0160069411	1001199504		•	
		0160075657 - Present	1001211869		•	
	8042	0160069722 - 0160075670, incl 0160065791, 0160065796, 0160065825, 0160065826, 0160069336, 0160069359 & 0160069441	1001199508		•	
		0160075671 - Present	1001211871		•	
	10042	0160069722 - 0160075987, incl 0160065791, 0160065796, 0160065825, 0160065826, 0160069336, 0160069359 & 0160069441	1001199512		•	
		0160075988 - Present	1001211873		•	
	10054	0160069722 - 0160075682, incl 0160065791, 0160065796, 0160065825, 0160065826, 0160069336, 0160069359, 0160069441 & 0160075696	1001199518		•	
		0160075683 - Present, excl 0160075696	1001211875		•	
12054	ALL	1001245474		•		

For SkyTrak Legacy machines, please refer to Non-Current Production SkyTrak table.

*Used with Universal Quick Switch (Skid Steer) Coupler.

NOTES:

- Use only JLG approved attachments with proper material handler model/attachment load capacity charts displayed in the operator's cab.
- Never use your attachment as a work platform or personnel carrier.

Can't find the attachment you are looking for? Contact your JLG Aftermarket Parts representative at 1-877-JLG-LIFT or visit www.jlg.com.

ATTACHMENTS

Non-Current Production - Side-Shift Carriages, JLG Available Through JLG Aftermarket Parts

CARRIAGE SIZE				50 in.	50 in.	50 in.	
APPROX. WEIGHT				898 lbs.	930 lbs.	905 lbs.	
PART NO.				1001193799	1001242644	1170002	
FORK PIN NO.				N/A	N/A	7028136	
MODEL	SN BREAKS		LOAD CHART BOOKLET				
JLG	642	ALL	1001212421		.		
	619A	ALL	Consult Factory			.	
	723A	ALL	Consult Factory			.	
	G5-19A	ALL	1706970			.	
	G6-23A	ALL	1706975			.	
	G6-42A	0160037722 - 0160040659		1001110401		.	
		0160040678 - Present		1001130739		.	
	G9-43A	0160037671 - 0160040674, excl 0160040468 & 0160040672		1001110402		.	
		0160040675 - Present, incl 0160040468 & 0160040672		1001130708		.	
	G10-43A	0160037671 - 0160040674, excl 0160040468 & 0160040672		1001115257		.	
		0160040675 - Present, incl 0160040468 & 0160040672		1001130844		.	
	G10-55A	0160037690 - Present, incl 0160038505, 0160038507, 0160038324, 0160038489 & 0160038493		1001115138		.	
	G12-55A	0160037689 - Present		1001115540		.	
	G15-44A	Prior To 0160074142		1001194130	.		
0160074142 - Present		1001211953	.				

Non-Current Production - Side-Shift Carriages, SkyTrak Available Through JLG Aftermarket Parts

CARRIAGE SIZE				50 in.
APPROX. WEIGHT				930 lbs.
PART NO.				1001242644
FORK PIN NO.				N/A
MODEL	SN BREAKS		LOAD CHART BOOKLET	
SKYTRAK	6036	0160031200 - 0160069719, excl 0160065792, 0160065798, 0160065824, 0160069383 & 0160069411	1001199500	.
	6042	0160031200 - 0160069719, excl 0160065792, 0160065798, 0160065824, 0160069383 & 0160069411	1001199504	.
	8042	0160031235 - 0160069721, excl 0160065791, 0160065796, 0160065825, 0160065826, 0160069336, 0160069359 & 0160069441	1001199508	.
	10042	0160031425 - 0160069721, excl 0160065791, 0160065796, 0160065825, 0160065826, 0160069336, 0160069359 & 0160069441	1001199512	.
	10054	0160031255 - 0160069721, excl 0160065791, 0160065796, 0160065825, 0160065826, 0160069336, 0160069359 & 0160069441	1001199518	.

Non-Current Production - Side-Shift Carriages, Lull Available Through JLG Aftermarket Parts

CARRIAGE SIZE				50 in.
APPROX. WEIGHT				930 lbs.
PART NO.				1001242644
FORK PIN NO.				N/A
MODEL	SN BREAKS		LOAD CHART BOOKLET	
LULL	644E-42	0160037900 - Present	1001106009	.
	944E-42	0160037794 - Present, incl 0160045421	1001134329	.
	1044C-54 SII	0160037794 - Present	1001106011	.

NOTES:

- Use only JLG approved attachments with proper material handler model/attachment load capacity charts displayed in the operator's cab.
- Never use your attachment as a work platform or personnel carrier.

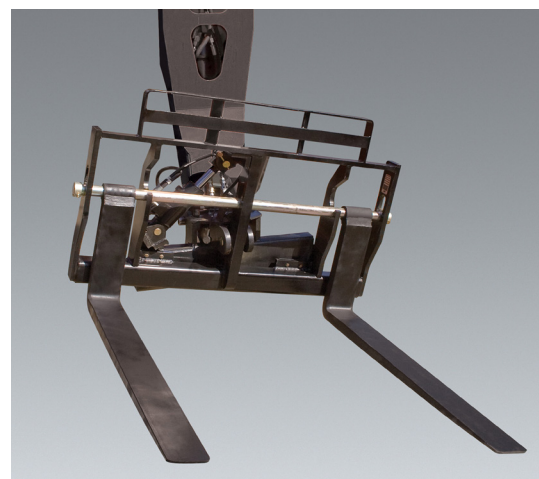
Can't find the attachment you are looking for? Contact your JLG Aftermarket Parts representative at 1-877-JLG-LIFT or visit www.jlg.com.

Side-Tilt Carriage

Adding to the versatility of the telehandler, the side-tilt carriage keeps the load level even when the terrain isn't. The carriage tilts loads from side-to-side to allow for uneven landing areas like a roof or sloped bank.

Features

- Side-to-side tilt on vertical plane
 - +/- 10 degrees on SkyTrak or Lull
 - +/- 10 degrees on JLG or Gradall
- Load or unload at any angle



Current Production - Side-Tilt Carriages

Available Through JLG Aftermarket Or With New Machine Orders

CARRIAGE SIZE			48 in.	48 in.	50 in.	60 in.	72 in.
APPROX. WEIGHT			660 lbs.	817 lbs.	832 lbs.	846 lbs.	884 lbs.
PART NO.			1001102331	1001104009	1001233383S	1001233384S	1001233385S
FORK PIN NO.			70021339	70022105	3423275	3423242	3423276
MODEL	SN BREAKS	LOAD CHART BOOKLET					
JLG	642, 943, 1043, 1055, 1255 ONLY	Software, Chart Library	1001187087 (Ref No.)
	742	ALL	1001226012
	943/1043	Without Outriggers	1001212420
		With Outriggers	1001212419
	1055	Prior To 0160074169	1001212227
		0160074169 - Present	1001211156
	1255	Prior To 0160074168	1001212225
		0160074168 - Present	1001211153
	1075	ALL	1001259238
	G5-18A	Universal (skid steer) quick coupler 0160040809 - Present	1001126677*
Quick coupler (hydraulic or manual)		1001102000	
SKYTRAK™	6036	0160069720 - 0160075649, incl 0160065792, 0160065798, 0160065824, 0160069383, 0160069411, 0160075653 & 0160075722	1001199500
		0160075650 - Present, excl 0160075653 & 0160075722	1001211867
	6042	0160069720 - 0160075656, incl 0160065792, 0160065798, 0160065824, 0160069383 & 0160069411	1001199504
		0160075657 - Present	1001211869
	8042	0160069722 - 0160075670, incl 0160065791, 0160065796, 0160065825, 0160065826, 0160069336, 0160069359 & 0160069441	1001199508
		0160075671 - Present	1001211871
	10042	0160069722 - 0160075987, incl 0160065791, 0160065796, 0160065825, 0160065826, 0160069336, 0160069359 & 0160069441	1001199512
		0160075988 - Present	1001211873
	10054	0160069722 - 0160075682, incl 0160065791, 0160065796, 0160065825, 0160065826, 0160069336, 0160069359, 0160069441 & 0160075696	1001199518
		0160075683 - Present, excl 0160075696	1001211875
12054	ALL	1001245474	

* Used with Universal Quick Switch (Skid Steer) Coupler.

NOTES:

- Use only JLG approved attachments with proper material handler model/attachment load capacity charts displayed in the operator's cab.
- Never use your attachment as a work platform or personnel carrier.

Can't find the attachment you are looking for? Contact your JLG Aftermarket Parts representative at 1-877-JLG-LIFT or visit www.jlg.com.

ATTACHMENTS

Non-Current Production - Side-Tilt Carriages, JLG Available Through JLG Aftermarket Parts

CARRIAGE SIZE			48 in.	50 in.	60 in.	72 in.	72 in.	
APPROX. WEIGHT			607 lbs.	832 lbs	846 lbs	948 lbs.	884 lbs	
PART NO.			1170046	1001233383S	1001233384S	91405079	1001233385S	
FORK PIN NO.			(2) 4040283	3423275	3423242	91401324	3423276	
MODEL	SN BREAKS	LOAD CHART BOOKLET						
JLG	642	ALL	1001212421		•	•	•	
	619A	ALL	Consult Factory	•				
	723A	ALL	Consult Factory	•				
	G5-19A	ALL	Consult Factory	•				
	G6-23A	ALL	Consult Factory	•				
	G6-42A	Prior To 0160037722	1001105323				•	
		0160037722 - 0160040659	1001106001		•	•		•
		0160040678 - Present	1001130793		•	•		•
	G9-43A	Prior To 0160037671	1001105325				•	
		0160037671 - 0160040674, excl 0160040468 & 0160040672	1001106002		•	•		•
		0160040675 - Present, incl 0160040468 & 0160040672	1001130663		•	•		•
	G10-43A	Prior To 0160037671	1001130935				•	
		0160037671 - 0160040674, excl 0160040468 & 0160040672	100113013		•	•		•
		0160040675 - Present, incl 0160040468 & 0160040672	1001130935		•	•		•
	G10-55A	Prior To 0160037689	1001105707				•	
		0160037690 - 0160038486, incl 0160038505 & 0160038507, excl 0160038324, 0160038489 & 0160038493	1001106003		•	•		•
		0160038500 - Present, incl 0160038324, 0160038489 & 0160038493, excl 0160038505 & 0160038507	100115135		•	•		•
	G12-55A	Prior To 0160037689	1001105326				•	
		0160037689 - 0160038533	1001106004		•	•		•
		0160038538 - Present	100115536		•	•		•
G15-44A	Prior To 0160074142	1001194130					•	
	0160074142 - Present	100121953					•	
TF6-42	ALL	Consult Factory				•		

* Used with Universal Quick Switch (Skid Steer) Coupler.

NOTES:

- Use only JLG approved attachments with proper material handler model/attachment load capacity charts displayed in the operator's cab.
- Never use your attachment as a work platform or personnel carrier.

Can't find the attachment you are looking for? Contact your JLG Aftermarket Parts representative at 1-877-JLG-LIFT or visit www.jlg.com.

Non-Current Production - Side-Tilt Carriages, Gradall

Available Through JLG Aftermarket Parts

CARRIAGE SIZE			48 in.	50 in.	60 in.	72 in.	72 in.
APPROX. WEIGHT			700 lbs.	832 lbs.	846 lbs.	948 lbs.	884 lbs.
PART NO.			91085058	10012333835	10012333845	91405079	10012333855
FORK PIN NO.			90451058	3423275	3423242	91401324	3423276
MODEL	SN BREAKS	LOAD CHART BOOKLET					
GRADALL	522D/524D	ALL	Consult Factory	.			
	534C-9	ALL	Consult Factory	.			
	534D-6	ALL	Consult Factory	.			
	534D-9	Prior To 0160037689	1001102719	.			
		0160037689 - Present	1001112753		.	.	.
	534D-10	Prior To 0160037689	1001102720	.			
		0160037689 - Present	1001112753		.	.	.
	544C	ALL	Consult Factory	.			
	544D	Prior To 0160037689	1001102721	.			
		0160037689 - Present	1001106008		.	.	.
G6-42P	Prior To 0160037689	1001105324				.	
	0160037689 - Present	1001106005		.	.	.	

Non-Current Production - Side-Tilt Carriages, SkyTrak

Available Through JLG Aftermarket Parts

CARRIAGE SIZE			48 in.	50 in.	60 in.	60 in.	72 in.	72 in.
APPROX. WEIGHT			640 lbs.	832 lbs.	472 lbs.	1047 lbs.	677 lbs.	800 lbs.
PART NO.			7134400	10012333835	10011019565	7134500	10012333855	7134600
FORK PIN NO.			7128772	3423275	3423242	7128792	3423276	90551013
MODEL	SN BREAKS	LOAD CHART BOOKLET						
SKYTRAK	4266	ALL	Consult Factory	.		.		.
	4270	ALL	Consult Factory	.		.		.
	4290	ALL	Consult Factory	.		.		.
	5028	ALL	Consult Factory	.		.		.
	6036	Prior To 0160031200	Consult Factory	.		.		.
		0160031200 - 0160069719, excl 0160065792, 0160065798, 0160065824, 0160069383 & 0160069411	1001199500	
	6042	Prior To 0160031200	Consult Factory	.		.		.
		0160031200 - 0160069719, excl 0160065792, 0160065798, 0160065824, 0160069383 & 0160069411	1001199504	
	8042	Prior To 0160031235	Consult Factory	.		.		.
		0160031235 - 0160069721, excl 0160065791, 0160065796, 0160065825, 0160065826, 0160069336, 0160069359 & 0160069441	1001199508	
	10042	Prior To 0160031425	Consult Factory	.		.		.
		0160031425 - 0160069721, excl 0160065791, 0160065796, 0160065825, 0160065826, 0160069336, 0160069359 & 0160069441	1001199512	
10054	Prior To 0160031255	Consult Factory	.		.		.	
	0160031255 - 0160069721, excl 0160065791, 0160065796, 0160065825, 0160065826, 0160069336, 0160069359 & 0160069441	1001199518		

NOTES:

- Use only JLG approved attachments with proper material handler model/attachment load capacity charts displayed in the operator's cab.
- Never use your attachment as a work platform or personnel carrier.

Can't find the attachment you are looking for? Contact your JLG Aftermarket Parts representative at 1-877-JLG-LIFT or visit www.jlg.com.

ATTACHMENTS

Non-Current Production - Side-Tilt Carriages, Lull

Available Through JLG Aftermarket Parts

CARRIAGE SIZE			48 in.	50 in.	50 in.	60 in.	60 in.	72 in.	72 in.	
APPROX. WEIGHT			640 lbs.	678 lbs.	832 lbs.	1047 lbs.	846 lbs.	800 lbs.	884 lbs.	
PART NO.			7134400	7161300	1001233383S	7134500	1001233384S	7134600	1001233385S	
FORK PIN NO.			7128772	90451058	3423275	7128792	3423242	90551013	3423276	
MODEL	SN BREAKS	LOAD CHART BOOKLET								
LULL	644B-37	ALL	Consult Factory							
	644B-42	ALL	Consult Factory							
	644D-34	ALL	Consult Factory							
	644E-42	Prior To 0160031500	7300628	
		0160037900 - Present	1001106009			.		.		.
	844C-42	ALL	Consult Factory							
	944E-42	Prior To 0160031500	7301586	
		0160037794 - Present, incl 0160045421	1001134329			.		.		.
	1044C-54 SII	Prior To 0160037893	1001105327							
		0160037794 - Present	1001106011			.		.		.
	6K-37	ALL	Consult Factory							
	6K-42	ALL	Consult Factory							
	8K-42	ALL	Consult Factory							
	10K-42/10K-54	ALL	Consult Factory							



NOTES:

- Use only JLG approved attachments with proper material handler model/attachment load capacity charts displayed in the operator's cab.
- Never use your attachment as a work platform or personnel carrier.

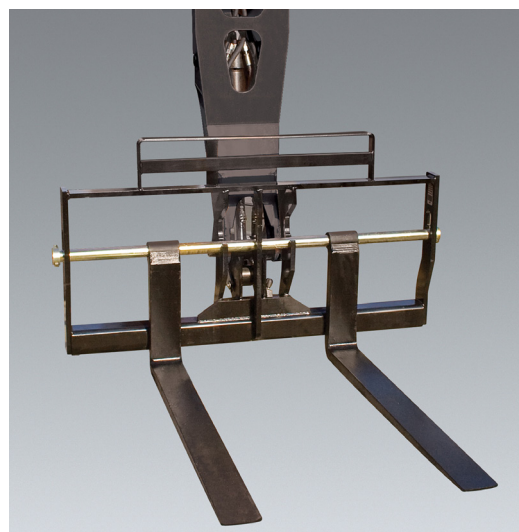
Can't find the attachment you are looking for? Contact your JLG Aftermarket Parts representative at 1-877-JLG-LIFT or visit www.jlg.com.

Standard Carriage

The standard carriage is manufactured with high quality steel and is available in various sizes. This attachment is essential on most job sites, allowing operators to pick and place materials – from pallets of concrete block to loads of lumber.

Features

- Standard up-and-down tilt on horizontal plane
- Multiple fork options
- Available with 8000 lb. lifting hook for most current production applications



Current Production - Standard Carriages
Available Through JLG Aftermarket Or With New Machine Orders

CARRIAGE SIZE			50 in.	50 in.	50 in.	50 in.	60 in.	60 in.	60 in.	72 in.	72 in.	72 in.	87 in.
LIFTING HOOK			No	Yes	No	No	Yes	No	No	Yes	No	No	No
APPROX. WEIGHT			460 lbs.	478 lbs.	475 lbs.	526 lbs.	503 lbs.	499 lbs.	708 lbs.	639 lbs.	639 lbs.	745 lbs.	915 lbs.
PART NO.			1001104435	10011460845**	1170021S	1001113038S*	1001146086S**	1170024S	1001183447	1001193794S	1001214416S	1001214415S	1001192339S
FORK PIN NO.			3423275	3423275	3423275	3423275	3423242	1170024	1001191108	3423276	3223276	1001214254	1001218754
MODEL	SN BREAKS	LOAD CHART BOOKLET											
JLG	642, 943, 1043, 1055, 1255 ONLY	Software, Chart Library	1001187087 (Ref No.)										
	742	ALL	1001226012
	943/1043	Without Outriggers	1001212420
		With Outriggers	1001212419
	1055	Prior To 0160074169	1001212227
		0160074169 - Present	1001211156
	1255	Prior To 0160074168	1001212225
		0160074168 - Present	1001211153
	1075	ALL	1001259238
	1644	ALL	1001233430						.			.	.
1732	ALL	1001233431						.			.	.	
	GS-18A	Quick coupler (hydraulic or manual)	1001102000	.		.							
Universal (skid steer) quick coupler Prior To 0160040809		1001126677	.		.								
SKYTRAK 14F	6036	0160069720 - 0160075649, incl 0160065792, 0160065798, 0160065824, 0160069383, 0160069411, 0160075653 & 0160075722	1001199500		
		0160075650 - Present, excl 0160075653 & 0160075722	1001211867		
	6042	0160069720 - 0160075656, incl 0160065792, 0160065798, 0160065824, 0160069383 & 0160069411	1001199504		
		0160075657 - Present	1001211869		

Continues on next page

* Used with optional Skid Steer Coupler.
** May require purchase of new load chart booklet on some models.

NOTES:

- Use only JLG approved attachments with proper material handler model/attachment load capacity charts displayed in the operator's cab.
- Never use your attachment as a work platform or personnel carrier.

Can't find the attachment you are looking for? Contact your JLG Aftermarket Parts representative at 1-877-JLG-LIFT or visit www.jlg.com.

ATTACHMENTS

Current Production - Standard Carriages

Available Through JLG Aftermarket Or With New Machine Orders

Continued from previous page

CARRIAGE SIZE			50 in.	50 in.	60 in.	60 in.	72 in.	72 in.
LIFTING HOOK			Yes	No	Yes	No	Yes	No
APPROX. WEIGHT			478 lbs.	475 lbs.	503 lbs.	499 lbs.	639 lbs.	639 lbs.
PART NO.			10011460845**	11700215	10011460865**	11700245	10011937945	10012115165
FORK PIN NO.			3423275	3423275	3423242	1170024	3423276	3223276
MODEL	SN BREAKS	LOAD CHART BOOKLET						
SKYTRAK 74F	8042	0160069722 - 0160075670, incl 0160065791, 0160065796, 0160065825, 0160065826, 0160069336, 0160069359 & 0160069441	1001199508
		0160075671 - Present	1001211871
	10042	0160069722 - 0160075987, incl 0160065791, 0160065796, 0160065825, 0160065826, 0160069336, 0160069359 & 0160069441	1001199512
		0160075988 - Present	1001211873
	10054	0160069722 - 0160075682, incl 0160065791, 0160065796, 0160065825, 0160065826, 0160069336, 0160069359, 0160069441 & 0160075696	1001199518
		0160075683 - Present, excl 0160075696	1001211875
12054	ALL	1001245474	

Non-Current Production - Standard Carriages, JLG

Available Through JLG Aftermarket Parts

CARRIAGE SIZE			48 in.	48 in.	50 in.	50 in.	50 in.	50 in.	60 in.	60 in.	60 in.	72 in.	72 in.	72 in.
LIFTING HOOK			No	No	No	No	Yes	No	No	Yes	No	No	No	Yes
APPROX. WEIGHT			377 lbs.	417 lbs.	460 lbs.	473 lbs.	478 lbs.	479 lbs.	498 lbs.	503 lbs.	522 lbs.	575 lbs.	638 lbs.	639 lbs.
PART NO.			1001107581	100112618	1001104435	11700215	10011460845**	11700195	11700245	10011460865**	11700225	11700255	1001211516	10011937945
FORK PIN NO.			1001107336	4040283	3423275	3423275	3423275	3423275	3423242	3423242	3423242	3423276	3223276	3423276
MODEL	SN BREAKS	LOAD CHART BOOKLET												
JLG	642	Prior to 0160075708	1001211624				.			.				.
		0160075708 to Present	1001212421			.			.			.		
	619A	ALL	Consult Factory	.	.									
	723A	ALL	Consult Factory	.	.									
	G5-19A	ALL	Consult Factory	.	.									
	G6-23A	ALL	Consult Factory	.	.									
	G6-42A	Prior to 0160037722	1001105323					.			.	.		
		0160037722 to Present	1001106001			.			.				.	
	G9-43A	Prior to 0160037665	1001105325					.			.	.		
		0160037666 to 0160051902 excl. 0160051085 to 0160051088, 0160051101, 0160051206 to 0160051209, 0160051220, 0160051223, 0160051232, 0160051368, 0160051376, 0160051378, 0160051381, 0160051382 & 0160051387	1001106002			.			.				.	
		0160051085 to Present incl. 0160051387	1001130663					.			.			Continues on next page

* Used with optional Skid Steer Coupler.

** May require purchase of new load chart booklet on some models.

NOTES:

- Use only JLG approved attachments with proper material handler model/attachment load capacity charts displayed in the operator's cab.

- Never use your attachment as a work platform or personnel carrier.

Can't find the attachment you are looking for? Contact your JLG Aftermarket Parts representative at 1-877-JLG-LIFT or visit www.jlg.com.

Non-Current Production - Standard Carriages, JLG
Available Through JLG Aftermarket Parts

Continued from previous page

CARRIAGE SIZE			50 in.	50 in.	50 in.	60 in.	60 in.	60 in.	60 in.	60 in.	72 in.	72 in.	72 in.
LIFTING HOOK			No	Yes	No	No	Yes	No	No	Yes	No	No	Yes
APPROX. WEIGHT			473 lbs.	478 lbs.	479 lbs.	498 lbs.	503 lbs.	522 lbs.	530 lbs.	548 lbs.	575 lbs.	638 lbs.	639 lbs.
PART NO.			1170021S	1001146084S**	1170019S	1170024S	1001146086S**	1170022S	1001211711	1001192915	1170025S	1001211516	1001193794S
FORK PIN NO.			3423275	3423275	3423275	3423242	3423242	3423242	3423242	3423242	3423276	3423276	3423276
MODEL	SN BREAKS	LOAD CHART BOOKLET											
JLG	G10-43A	Prior To 0160037665	1001113013			.			.			.	
		0160037666 to 0160051902 excl. 0160051085 to 0160051088, 0160051101, 0160051206 to 0160051209, 0160051220, 0160051223, 0160051232, 0160051368, 0160051376, 0160051378, 0160051381, 0160051382 & 0160051387	1001130935	.		.						.	
		0160051085 to Present incl. 0160051387	1001130935		.		.						.
	G10-55A	Prior to 0160037689	1001105707			.			.			.	
		0160037689 to 0160051999	1001106003	.		.						.	
		0160052000 to Present	1001115135		.		.						.
	G12-55A	Prior to 0160037689	1001105326			.			.			.	
		0160037689 - 016005199	1001106004	.		.						.	
		0160052000 - Present	1001115536		.		.						.
	G15-44A	Prior to 0160075857	1001194130								.		.
		0160045857 - Present	1001211953							.		.	
	TF6-42	ALL	Consult Factory			.			.			.	



** May require purchase of new load chart booklet on some models.

NOTES:

- Use only JLG approved attachments with proper material handler model/attachment load capacity charts displayed in the operator's cab.
- Never use your attachment as a work platform or personnel carrier.

Can't find the attachment you are looking for? Contact your JLG Aftermarket Parts representative at 1-877-JLG-LIFT or visit www.jlg.com.

ATTACHMENTS

Non-Current Production - Standard Carriages, Gradall Available Through JLG Aftermarket Parts

CARRIAGE SIZE			50 in.	50 in.	50 in.	60 in.	72 in.	72 in.
LIFTING HOOK			No	No	No	No	No	No
APPROX. WEIGHT			471 lbs.	479 lbs.	490 lbs.	534 lbs.	586 lbs.	639 lbs.
PART NO.			11700215	11700195	11700205	1170023	11700265	10012115165
FORK PIN NO.			3423275	3423275	3423275	3423242	3423276	3223276
MODEL	SN BREAKS	LOAD CHART BOOKLET						
GRADALL	522D/524D	ALL	Consult Factory			•	•	•
	534C-9	ALL	Consult Factory			•	•	•
	534C-10	ALL	Consult Factory			•	•	•
	534D-6	ALL	Consult Factory			•	•	•
	534D-9	Prior To 0160037689	1001102719			•	•	•
		0160037689 - Present	1001112753	•				•
	534D-10	Prior To 0160037689	1001102720			•	•	•
		0160037689 - Present	1001112753	•				•
	544C	ALL	Consult Factory			•	•	•
	544D	Prior To 0160037689	1001102721			•	•	•
		0160037689 - Present	1001106008	•				•
	G6-42P	Prior To 0160037689	1001105324		•			
0160037689 - Present		1001106005	•				•	

Non-Current Production - Standard Carriages, SkyTrak Available Through JLG Aftermarket Parts

CARRIAGE SIZE			48 in.	50 in.	50 in.	60 in.	60 in.	60 in.	72 in.	72 in.	72 in.	
LIFTING HOOK			No	No	Yes	No	Yes	No	No	No	Yes	
APPROX. WEIGHT			509 lbs.	471 lbs.	478 lbs.	497 lbs.	503 lbs.	510 lbs.	509 lbs.	639 lbs.	639 lbs.	
PART NO.			60405005	11700215	10011460845**	11700245	10011460865**	60406005	60407005	10012115165	10011937945	
FORK PIN NO.			7128772	3423275	3423275	3423242	3423242	7128792	90551013	3223276	3423276	
MODEL	SN BREAKS	LOAD CHART BOOKLET										
SKYTRAK	4266	ALL	Consult Factory	•				•	•			
	4270	ALL	Consult Factory	•				•	•			
	4290	ALL	Consult Factory	•				•	•			
	5028	ALL	Consult Factory	•				•	•			
	6036	Prior To 0160031200	Consult Factory	•					•	•		
		0160031200 - 0160069719, excl 0160065792, 0160065798, 0160065824, 0160069383 & 0160069411	1001199500		•	•	•	•			•	•
	6042	Prior To 0160031200	Consult Factory	•					•	•		
		0160031200 - 0160069719, excl 0160065792, 0160065798, 0160065824, 0160069383 & 0160069411	1001199504		•	•	•	•			•	•
	8042	Prior To 0160031235	Consult Factory	•					•	•		
		0160031235 - 0160069721, excl 0160065791, 0160065796, 0160065825, 0160065826, 0160069336, 0160069359 & 0160069441	1001199508		•	•	•	•			•	•
	10042	Prior To 0160031425	Consult Factory									
		0160031425 - 0160069721, excl 0160065791, 0160065796, 0160065825, 0160065826, 0160069336, 01600669359 & 0160069441	1001199512		•	•	•	•			•	•
10054	Prior To 0160031255	Consult Factory										
	0160031255 - 0160069721, excl 0160065791, 0160065796, 0160065825, 0160065826, 0160069336, 0160069359 & 0160069441	1001199518		•	•	•	•			•	•	

** May require purchase of new load chart booklet on some models.

NOTES:

- Use only JLG approved attachments with proper material handler model/attachment load capacity charts displayed in the operator's cab.
- Never use your attachment as a work platform or personnel carrier.

Can't find the attachment you are looking for? Contact your JLG Aftermarket Parts representative at 1-877-JLG-LIFT or visit www.jlg.com.

Non-Current Production - Standard Carriages, Lull
Available Through JLG Aftermarket Parts

CARRIAGE SIZE			48 in.	50 in.	50 in.	50 in.	50 in.	60 in.	60 in.	60 in.	72 in.	72 in.	72 in.	74 in.		
LIFTING HOOK			No	No	Yes	No	No	No	Yes	No	No	No	Yes	No		
APPROX. WEIGHT			509 lbs.	471 lbs.	478 lbs.	500 lbs.	532 lbs.	497 lbs.	503 lbs.	510 lbs.	509 lbs.	639 lbs.	639 lbs.	598 lbs.		
PART NO.			60405005	11700215	1001146084S**	48040	71612005	11700245	1001146086S**	60406005	60407005	1001211516S	1001193794S	48042		
FORK PIN NO.			7128772	3423275	3423275	10223049	90451058	3423242	3423242	7128792	90551013	3223276	3423276	10124495		
MODEL	SN BREAKS	LOAD CHART BOOKLET														
LULL	644B-42	ALL	Consult Factory				.								.	
	644D-34	ALL	Consult Factory				.								.	
	644E-42	Prior To 0160031500	7300628				
		0160031500 - Present	1001134329			
	844C-42	ALL	Consult Factory				.								.	
	944E-42	Prior To 0160031500	7301586				
		0160031500 - Present	1001106011			
	1044C-54 SII	Prior To 0160037893	1001105327				.									.
		0160037893 - Present	1001106009			
	6K-37	ALL	Consult Factory				.								.	
	6K-42	ALL	Consult Factory				.								.	
	8K-42	ALL	Consult Factory				.								.	
10K-42/ 10K-54	ALL	Consult Factory				.								.		



** May require purchase of new load chart booklet on some models.

NOTES:

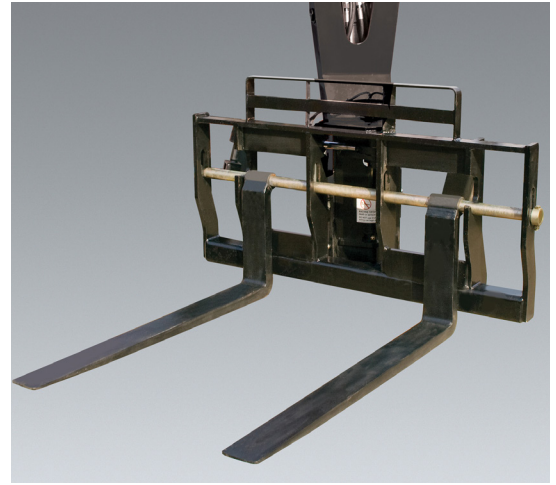
- Use only JLG approved attachments with proper material handler model/attachment load capacity charts displayed in the operator's cab.
 - Never use your attachment as a work platform or personnel carrier.
- Can't find the attachment you are looking for? Contact your JLG Aftermarket Parts representative at 1-877-JLG-LIFT or visit www.jlg.com.

Swing Carriage

The swing carriage permits the operator to maneuver loads through openings and tight spaces like windows or scaffolding by swinging the carriage to the right or left.

Features

- Right and left 90° swing option
- Right and left 180° swing option
- Standard up-and-down tilt on horizontal plane



Current Production - Swing Carriages

Available Through JLG Aftermarket Or With New Machine Orders

CARRIAGE SIZE			72 in.	72 in.	
APPROX. WEIGHT			1154 lbs.	1,878 lbs.	
CARRIAGE SWING			90°	180°	
PART NO.			1001095418S	1001238627	
FORK PIN NO.			3423276	70020027	
MODEL	SN BREAKS	LOAD CHART BOOKLET			
JLG	642, 943, 1043, 1055, 1255 ONLY	Software, Chart Library	1001187087 (Ref No.)		
	742	ALL	1001226012	•	
	943/1043	Without Outriggers	1001212420	•	
		With Outriggers	1001212419	•	
	1055	Prior To 0160074169	1001212227	•	•
		0160074169 - Present	1001211156	•	•
	1255	Prior To 0160074168	1001212225	•	•
		0160074168 - Present	1001211153	•	•
	1075	ALL	1001259238	•	•
	SKYTRAK™4F	6036	0160069720 - 0160075649, incl 0160065792, 0160065798, 0160065824, 0160069383, 0160069411, 0160075653 & 0160075722	1001199500	•
0160075650 - Present, excl 0160075653 & 0160075722			1001211867	•	
6042		0160069720 - 0160075656, incl 0160065792, 0160065798, 0160065824, 0160069383 & 0160069411	1001199504	•	
		0160075657 - Present	1001211869	•	
8042		0160069722 - 0160075670, incl 0160065791, 0160065796, 0160065825, 0160065826, 0160069336, 0160069359 & 0160069441	1001199508	•	
		0160075671 - Present	1001211871	•	
10042		0160069722 - 0160075987, incl 0160065791, 0160065796, 0160065825, 0160065826, 0160069336, 0160069359 & 0160069441	1001199512	•	
		0160075988 - Present	1001211873	•	
10054		0160069722 - 0160075682, incl 0160065791, 0160065796, 0160065825, 0160065826, 0160069336, 0160069359, 0160069441 & 0160075696	1001199518	•	
		0160075683 - Present, excl 0160075696	1001211875	•	
12054	ALL	1001245474	•		

NOTES:

- Use only JLG approved attachments with proper material handler model/attachment load capacity charts displayed in the operator's cab.
- Never use your attachment as a work platform or personnel carrier.

Can't find the attachment you are looking for? Contact your JLG Aftermarket Parts representative at 1-877-JLG-LIFT or visit www.jlg.com.

Non-Current Production - Swing Carriages, JLG

Available Through JLG Aftermarket Parts

CARRIAGE SIZE			72 in.	72 in.	72 in.
APPROX. WEIGHT			1154 lbs.	1,878 lbs.	2112 lbs.
CARRIAGE SWING			90°	180°	180°
PART NO.			10010954185	1001238627	91563146
FORK PIN NO.			3423276	70020027	70020027
MODEL	SN BREAKS	LOAD CHART BOOKLET			
JLG	642	ALL	1001212421	.	
	G6-42A	Prior To 0160037722	1001105323		
		0160037722 - 0160040659	1001106001	.	
		0160040678 - Present	1001130793	.	
	G9-43A	Prior To 0160037671	1001105325		
		0160037671 - 0160040674, excl 0160040468 & 0160040672	1001106002	.	
		0160040675 - Present, incl 0160040468 & 0160040672	1001130663	.	
	G10-43A	0160037671 - 0160040674, excl 0160040468 & 0160040672	100113013	.	
		0160040675 - Present, incl 0160040468 & 0160040672	1001130935	.	
	G10-55A	Prior To 0160037689	1001105707		.
		0160037690 - 0160038486, incl 0160038505 & 0160038507, excl 0160038324, 0160038489 & 0160038493	1001106003	.	
		0160038500 - Present, incl 0160038324, 0160038489 & 0160038493, excl 0160038505 & 0160038507	1001115135	.	
		0160037690 - Present, incl 0160038505, 0160038507, 0160038324, 0160038489 & 0160038493	1001115138		.
	G12-55A	Prior To 0160037689	1001105326		.
		0160037689 - 0160038533	1001106004	.	
		0160038538 - Present	1001115536	.	
	G15-44A	Prior To 0160074142	1001194130	.	
		0160074142 - Present	1001211953	.	
	TF6-42	ALL	Consult Factory		

Non-Current Production - Swing Carriages, Gradall

Available Through JLG Aftermarket Parts

CARRIAGE SIZE			72 in.	72 in.	72 in.
APPROX. WEIGHT			1154 lbs.	1230 lbs.	1,878 lbs.
CARRIAGE SWING			90°	100°	180°
PART NO.			10010954185	90455044	1001238627
FORK PIN NO.			3423276	90551013	70020027
MODEL	SN BREAKS	LOAD CHART BOOKLET			
GRADALL	522D/54D	ALL	Consult Factory	.	
	534C-9	ALL	Consult Factory	.	
	534C-10	ALL	Consult Factory	.	
	534D-6	ALL	Consult Factory	.	
	534D-9	Prior To 0160037689	1001102719		.
		0160037689 - Present	1001112753	.	
	534D-10	Prior To 0160037689	1001102720		.
		0160037689 - Present	1001112753	.	
		0160037689 - Present	100110407		.
	544C	ALL	Consult Factory	.	
	544D	Prior To 0160037689	1001102721		.
		0160037689 - Present	1001106008	.	
		0160037689 - Present	100110408		.
	G6-42P	Prior To 0160037689	1001105324		
		0160037689 - Present	1001106005	.	

NOTES:

- Use only JLG approved attachments with proper material handler model/attachment load capacity charts displayed in the operator's cab.
- Never use your attachment as a work platform or personnel carrier.

Can't find the attachment you are looking for? Contact your JLG Aftermarket Parts representative at 1-877-JLG-LIFT or visit www.jlg.com.

ATTACHMENTS

Non-Current Production - Swing Carriages, SkyTrak Available Through JLG Aftermarket Parts

CARRIAGE SIZE			72 in.	
APPROX. WEIGHT			1154 lbs.	
CARRIAGE SWING			90°	
PART NO.			1001095418S	
FORK PIN NO.			3423276	
MODEL	SN BREAKS	LOAD CHART BOOKLET		
SKYTRAK	4266	ALL	Consult Factory	
	4270	ALL	Consult Factory	
	4290	ALL	Consult Factory	
	5028	ALL	Consult Factory	
	6036	Prior To 0160031200	Consult Factory	
		0160031200 - 0160069719, excl 0160065792, 0160065798, 0160065824, 0160069383 & 0160069411	1001199500	•
	6042	Prior To 0160031200	Consult Factory	
		0160031200 - 0160069719, excl 0160065792, 0160065798, 0160065824, 0160069383 & 0160069411	1001199504	•
	8042	Prior To 0160031235	Consult Factory	
		0160031235 - 0160069721, excl 0160065791, 0160065796, 0160065825, 0160065826, 0160069336, 0160069359 & 0160069441	1001199508	•
	10042	Prior To 0160031425	Consult Factory	
		0160031425 - 0160069721, excl 0160065791, 0160065796, 0160065825, 0160065826, 0160069336, 0160069359 & 0160069441	1001199512	•
10054	Prior To 0160031255	Consult Factory		
	0160031255 - 0160069721, excl 0160065791, 0160065796, 0160065825, 0160065826, 0160069336, 0160069359 & 0160069441	1001199518	•	

Non-Current Production - Swing Carriages, Lull Available Through JLG Aftermarket Parts

CARRIAGE SIZE			72 in.
APPROX. WEIGHT			1154 lbs.
CARRIAGE SWING			90°
PART NO.			1001095418S
FORK PIN NO.			3423276
MODEL	SN BREAKS	LOAD CHART BOOKLET	
LULL	644E-42	0160037900 - Present	1001106009
		Prior To 0160031500	7300628
	944E-42	0160037794 - Present, incl 0160045421	1001134329
		Prior To 0160031500	7301586
	1044C-54 SII	0160037794 - Present	1001106011
		Prior To 0160037893	1001105327

NOTES:

- Use only JLG approved attachments with proper material handler model/attachment load capacity charts displayed in the operator's cab.
- Never use your attachment as a work platform or personnel carrier.

Can't find the attachment you are looking for? Contact your JLG Aftermarket Parts representative at 1-877-JLG-LIFT or visit www.jlg.com.

Tower Carriages

The tower increases mobility and efficiency on the job site. It allows the operator to move materials to a higher row of scaffolding by extending the vertical reach without any additional boom extension.

Features

- Tower requires auxiliary hydraulics
- Available with side-tilt carriage
 - JLG and Gradall models equipped with tower with side-tilt carriage requires auxiliary electrics
 - Lull 1044C-54 and 1044C-54 SII models equipped with tower with side-tilt carriage requires second auxiliary circuit
- Available with side-shift 100° swing carriage



Current Production - Tower Carriages

Available Through JLG Aftermarket Or With New Machine Orders

TOWER HEIGHT			8 ft.	8 ft.	
CARRIAGE TYPE			Standard	Side-Tilt	
CARRIAGE WIDTH			50 in.	50 in.	
INCLUDED FORK LENGTH			None	None	
LIFTING CAPACITY			4500 lbs.	4500 lbs.	
PART NO.			1001108668	1001218255	
FORK PIN NO.			70022990	70022990	
MODEL	SN BREAKS	LOAD CHART BOOKLET			
JLG	642, 943, 1043, 1055, 1255 ONLY	Software, Chart Library	1001187087 (Ref No.)		
	742	ALL	1001226012	•	
	943/1043	Without Outriggers	1001212420	•	
		With Outriggers	1001212419	•	
	1055	Prior To 0160074169	1001212227	•	
		0160074169 - Present	1001211156	•	
	1255	Prior To 0160074168	1001212225	•	•
		0160074168 - Present	1001211153	•	•
1075	ALL	1001259238	•		
SKYTRAK T4F	6036	0160069720 - 0160075649, incl 0160065792, 0160065798, 0160065824, 0160069383, 0160069411, 0160075653 & 0160075722	1001199500	•	
		0160075650 - Present, excl 0160075653 & 0160075722	1001211867	•	
	6042	0160069720 - 0160075656, incl 0160065792, 0160065798, 0160065824, 0160069383 & 0160069411	1001199504	•	
		0160075657 - Present	1001211869	•	
	8042	0160069722 - 0160075670, incl 0160065791, 0160065796, 0160065825, 0160065826, 0160069336, 0160069359 & 0160069441	1001199508	•	
		0160075671 - Present	1001211871	•	
	10042	0160069722 - 0160075987, incl 0160065791, 0160065796, 0160065825, 0160065826, 0160069336, 0160069359 & 0160069441	1001199512	•	
		0160075988 - Present	1001211873	•	
	10054	0160069722 - 0160075682, incl 0160065791, 0160065796, 0160065825, 0160065826, 0160069336, 0160069359, 0160069441 & 0160075696	1001199518	•	
		0160075683 - Present, excl 0160075696	1001211875	•	
12054	ALL	1001245474	•		

NOTES:

- Use only JLG approved attachments with proper material handler model/attachment load capacity charts displayed in the operator's cab.
- Never use your attachment as a work platform or personnel carrier.

Can't find the attachment you are looking for? Contact your JLG Aftermarket Parts representative at 1-877-JLG-LIFT or visit www.jlg.com.

ATTACHMENTS

Non-Current Production - Tower Carriages, JLG Available Through JLG Aftermarket Parts

TOWER HEIGHT			8 ft.	
CARRIAGE TYPE			Standard	
CARRIAGE WIDTH			50 in.	
INCLUDED FORK LENGTH			None	
LIFTING CAPACITY			4500 lbs.	
PART NO.			1001108668	
FORK PIN NO.			70022990	
MODEL	SN BREAKS	LOAD CHART BOOKLET		
JLG	642	ALL	1001212421	•
	G6-42A	Prior To 0160037722	1001105323	
		0160037722 - 0160040659	1001110401	•
		0160040678 - Present	1001130793	•
	G9-43A	Prior To 0160037671	1001105325	
		0160037671 - 0160040674, excl 0160040468 & 0160040672	1001110402	•
		0160040675 - Present, incl 0160040468 & 0160040672	1001130708	•
	G10-43A	0160037671 - 0160040674, excl 0160040468 & 0160040672	1001115257	•
		0160040675 - Present, incl 0160040468 & 0160040672	1001130844	•
	G10-55A	Prior To 0160037689	1001105707	
		0160037690 - Present, incl 0160038505, 0160038507, 0160038324, 0160038489 & 0160038493	1001115138	•
	G12-55A	Prior To 0160037689	1001105326	
		0160037689 - Present	1001115540	•
	TF6-42	ALL	Consult Factory	

Non-Current Production - Tower Carriages, Gradall Available Through JLG Aftermarket Parts

TOWER HEIGHT			8 ft.	
CARRIAGE TYPE			Standard	
CARRIAGE WIDTH			50 in.	
INCLUDED FORK LENGTH			None	
LIFTING CAPACITY			4500 lbs.	
PART NO.			1001108668	
FORK PIN NO.			70022990	
MODEL	SN BREAKS	LOAD CHART BOOKLET		
GRADALL	522D/524D	ALL	Consult Factory	
	534C-9	ALL	Consult Factory	
	534C-10	ALL	Consult Factory	
	534D-6	ALL	Consult Factory	
		Prior To 0160037689	1001102719	
	534D-9	Prior To 0160037689	1001102720	
		0160037689 - Present	1001110406	•
	534D-10	Prior To 0160037689	1001102721	
		0160037689 - Present	1001110407	•
	544C	ALL	Consult Factory	
	544D	Prior To 0160037689	1001102721	•
		0160037689 - Present	1001106008	•
	G6-42P	Prior To 0160037689	1001105324	
		0160037689 - Present	1001106005	•

Continues on next page

NOTES:

- Use only JLG approved attachments with proper material handler model/attachment load capacity charts displayed in the operator's cab.
- Never use your attachment as a work platform or personnel carrier.

Can't find the attachment you are looking for? Contact your JLG Aftermarket Parts representative at 1-877-JLG-LIFT or visit www.jlg.com.

Non-Current Production - Tower Carriages, SkyTrak
Available Through JLG Aftermarket Parts

TOWER HEIGHT			8 ft.
CARRIAGE TYPE			Standard
CARRIAGE WIDTH			50 in.
INCLUDED FORK LENGTH			None
LIFTING CAPACITY			4500 lbs.
PART NO.			1001108668
FORK PIN NO.			70022990
MODEL	SN BREAKS	LOAD CHART BOOKLET	
SKYTRAK	6036	0160031200 - 0160069719, excl 0160065792, 0160065798, 0160065824, 0160069383 & 0160069411	
	6042	0160031200 - 0160069719, excl 0160065792, 0160065798, 0160065824, 0160069383 & 0160069411	
	8042	0160031235 - 0160069721, excl 0160065791, 0160065796, 0160065825, 0160065826, 0160069336, 0160069359 & 0160069441	
	10042	0160031425 - 0160069721, excl 0160065791, 0160065796, 0160065825, 0160065826, 0160069336, 01600669359 & 0160069441	
		0160037798 - Present	
	10054	0160031255 - 0160069721, excl 0160065791, 0160065796, 0160065825, 0160065826, 0160069336, 0160069359 & 0160069441	
0160037793 - Present			

Non-Current Production - Tower Carriages, Lull
Available Through JLG Aftermarket Parts

TOWER HEIGHT			8 ft.	8 ft.
CARRIAGE TYPE			Standard	Side-Tilt
CARRIAGE WIDTH			50 in.	50 in.
INCLUDED FORK LENGTH			None	None
LIFTING CAPACITY			4500 lbs.	4500 lbs.
PART NO.			1001108668	1001108670
FORK PIN NO.			70022990	70022990
MODEL	SN BREAKS	LOAD CHART BOOKLET		
LULL	644E-42	0160037900 - Present		
	944E-42	0160037794 - Present, incl 0160045421		
	1044C-54 SII	Prior To 0160037893		
		0160037900 - Present		

NOTES:

- Use only JLG approved attachments with proper material handler model/attachment load capacity charts displayed in the operator's cab.
- Never use your attachment as a work platform or personnel carrier.

Can't find the attachment you are looking for? Contact your JLG Aftermarket Parts representative at 1-877-JLG-LIFT or visit www.jlg.com.

Auger

An auger expands the functionality of your telehandler. Not only can the machine go up in the air but also down into the ground. With various auger bit sizes available, the operator can be precise in choosing one to best fit the task at hand.

Features

- Auger Drive Motor Part No. 1001092816 & Adapter Part No. 6043600
Required for SkyTrak and Lull E-Series applications
- Auger Drive Motor Part No. 51012 Required for Lull C-Series applications



Auger Bits

Current Production - Auger Bits
Available Through JLG Aftermarket Parts

DIAMETER		6 to 18 in.	
DEPTH		48 in.	
PART NO.		1001242616	
	MODEL	SN BREAKS	LOAD CHART BOOKLET
JLG	G5-18A	with the Universal (skid steer) quick coupler 0160040809 - Present	1001126677

Non-Current Production - Auger Bits, SkyTrak
Available Through JLG Aftermarket Parts

DIAMETER		6 in.	9 in.	12 in.	15 in.	18 in.	24 in.
DEPTH		50 in.	50 in.	50 in.	50 in.	50 in.	50 in.
PART NO.		8866415	8866416	8866417	8866418	8866419	8866420
	MODEL	SN BREAKS	LOAD CHART BOOKLET				
SKYTRAK	6036	Prior To 0160031200	Consult Factory	•	•	•	•
	6042	Prior To 0160031200	Consult Factory	•	•	•	•
	8042	Prior To 0160031235	Consult Factory	•	•	•	•
	10042	Prior To 0160031425	Consult Factory	•	•	•	•
	10054	Prior To 0160031255	Consult Factory	•	•	•	•

Non-Current Production - Auger Bits, Lull
Available Through JLG Aftermarket Parts

DIAMETER		6 in.	9 in.	12 in.	15 in.	18 in.	24 in.	8 in.	12 in.	16 in.	18 in.
DEPTH		50 in.	50 in.	50 in.	50 in.	50 in.	50 in.	60 in.	60 in.	60 in.	60 in.
PART NO.		8866415	8866416	8866417	8866418	8866419	8866420	10166297	10166298	10166994	10166299
	MODEL	SN BREAKS	LOAD CHART BOOKLET								
LULL	644E-42	Prior To 0160031500	7300628	•	•	•	•	•	•	•	•
	944E-42	Prior To 0160031500	7301586	•	•	•	•	•	•	•	•
	1044C-54 SII	Prior To 0160037893	1001105327	•	•	•	•	•	•	•	•

NOTES:

- Use only JLG approved attachments with proper material handler model/attachment load capacity charts displayed in the operator's cab.
- Never use your attachment as a work platform or personnel carrier.

Can't find the attachment you are looking for? Contact your JLG Aftermarket Parts representative at 1-877-JLG-LIFT or visit www.jlg.com.

Auger Extensions

Non-Current Production - Auger Extensions, SkyTrak
Available Through JLG Aftermarket Parts

LENGTH				24 in.
PART NO.				8866423
	MODEL	SN BREAKS	LOAD CHART BOOKLET	
SKYTRAK	6036	Prior To 0160031200	Consult Factory	•
	6042	Prior To 0160031200	Consult Factory	•
	8042	Prior To 0160031235	Consult Factory	•
	10042	Prior To 0160031425	Consult Factory	
	10054	Prior To 0160031255	Consult Factory	



NOTES:

- Use only JLG approved attachments with proper material handler model/attachment load capacity charts displayed in the operator's cab.
- Never use your attachment as a work platform or personnel carrier.

Can't find the attachment you are looking for? Contact your JLG Aftermarket Parts representative at 1-877-JLG-LIFT or visit www.jlg.com.

4-in-1 Bucket

This bucket saves you time and money. The 4-in-1 bucket can be used for loading, leveling, bottom dumping or as a grapple bucket. 4-in-1 buckets are not designed for digging.



Current Production - 4-in-1 Bucket
Available Through JLG Aftermarket Parts

BUCKET SIZE			94 in.
CAPACITY			2.6 cu. yd.
APPROX. WEIGHT			3,473 lbs.
PART NO.			1001192614
	MODEL	SN BREAKS	LOAD CHART BOOKLET
JLG	1644	ALL	1001233430
	1732	ALL	1001233431

Non-Current Production - 4-in-1 Bucket< JLG
Available Through JLG Aftermarket Parts

BUCKET SIZE			96 in.
CAPACITY			1.3 cu. yd.
APPROX. WEIGHT			1806 lbs.
PART NO.			0930003
	MODEL	SN BREAKS	LOAD CHART BOOKLET
JLG	619A	ALL	Consult Factory
	723A	ALL	Consult Factory
	G5-19A	ALL	Consult Factory
	G6-23A	ALL	Consult Factory

NOTES:

- Use only JLG approved attachments with proper material handler model/attachment load capacity charts displayed in the operator's cab.
- Never use your attachment as a work platform or personnel carrier.

Can't find the attachment you are looking for? Contact your JLG Aftermarket Parts representative at 1-877-JLG-LIFT or visit www.jlg.com.

Fork Mounted Bucket

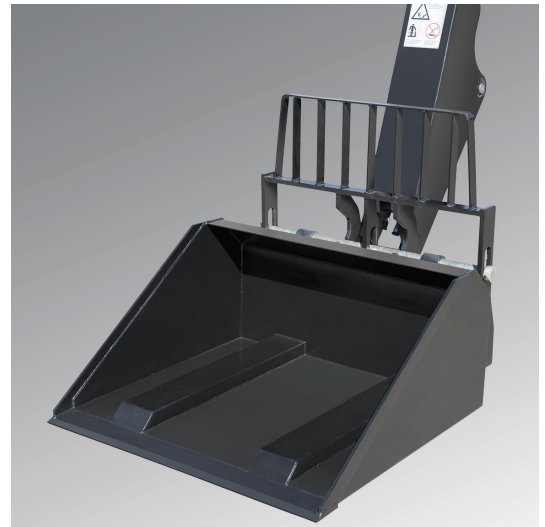
The fork mounted bucket provides the versatility of a bucket with the convenience of not needing to remove forks and carriages.

Features

- Cost effective alternative to a coupler mounted bucket
- For use with approved JLG telehandlers

Specifications

- Maximum capacity: 2000 lbs
- Maximum weight: 705 lbs
- 60" bucket
- Bucket width: 1 cu. yd.
- 48" forks
- Distance to center of gravity: 22.5 in.



Current Production - Fork Mounted Bucket

Available Through JLG Aftermarket Or With New Machine Orders

BUCKET WIDTH		60"
CAPACITY		2000 lbs.
APPROX. WEIGHT		705 lbs.
PART NO.		1001195970
	MODEL	SN BREAKS
JLG	742	ALL
	943/1043	Without Outriggers
		With Outriggers
	1055	Prior To 0160074169
		0160074169 - Present
	1255	Prior To 0160074168
		0160074168 - Present
	1075	ALL
1644	ALL	
1732	ALL	
SKYTRAK™	6036	0160069720 - 0160075649, incl 0160065792, 0160065798, 0160065824, 0160069383, 0160069411, 0160075653 & 0160075722
		0160075650 - Present, excl 0160075653 & 0160075722
	6042	0160069720 - 0160075656, incl 0160065792, 0160065798, 0160065824, 0160069383 & 0160069411
		0160075657 - Present
	8042	0160069722 - 0160075670, incl 0160065791, 0160065796, 0160065825, 0160065826, 0160069336, 0160069359 & 0160069441
		0160075671 - Present
	10042	0160069722 - 0160075987, incl 0160065791, 0160065796, 0160065825, 0160065826, 0160069336, 0160069359 & 0160069441
		0160075988 - Present
	10054	0160069722 - 0160075682, incl 0160065791, 0160065796, 0160065825, 0160065826, 0160069336, 0160069359, 0160069441 & 0160075696
		0160075683 - Present, excl 0160075696
12054	ALL	

Use Appropriate Carriage Attachment Load Chart

NOTES:

- Use only JLG approved attachments with proper material handler model/attachment load capacity charts displayed in the operator's cab.
- Never use your attachment as a work platform or personnel carrier.

Can't find the attachment you are looking for? Contact your JLG Aftermarket Parts representative at 1-877-JLG-LIFT or visit www.jlg.com.

Non-Current Production - Fork Mounted Bucket, JLG
Available Through JLG Aftermarket Parts

BUCKET WIDTH		60"	
CAPACITY		2000 lbs.	
APPROX. WEIGHT		705 lbs.	
PART NO.		1001195970	
MODEL	SN BREAKS		
JLG	642	ALL	•
	G6-42A	0160037722 - 0160040659	•
		0160040678 - Present	•
	G9-43A	0160037671 - 0160040674, excl 0160040468 & 0160040672	•
		0160040675 - Present, incl 0160040468 & 0160040672	•
	G10-43A	0160037671 - 0160040674, excl 0160040468 & 0160040672	•
		0160040675 - Present, incl 0160040468 & 0160040672	•
	G10-55A	0160037690 - Present, incl 0160038505, 0160038507, 0160038324, 0160038489 & 0160038493	•
G12-55A	0160037689 - Present	•	



Use Appropriate Carriage Attachment Load Chart

NOTES:

- Use only JLG approved attachments with proper material handler model/attachment load capacity charts displayed in the operator's cab.
- Never use your attachment as a work platform or personnel carrier.

Can't find the attachment you are looking for? Contact your JLG Aftermarket Parts representative at 1-877-JLG-LIFT or visit www.jlg.com.

Grapple Bucket

The grapple bucket uses hydraulic arms to secure bulky loads and materials. This feature is useful when cleaning up natural disaster sites and day-to-day job site scraps. Grapple buckets are not designed for digging.

Features

- Independent grapple arms require auxiliary hydraulics (except 619A, 723A, G5-19A and G6-23A)



Current Production - Grapple Bucket

Available Through JLG Aftermarket Or With New Machine Orders

BUCKET SIZE			72 in.	94 in.	94 in.	96 in.	
CAPACITY			1 cu. yd.	1.7 cu. yd.	2.6 cu. yd.	1.75 cu. yd.	
APPROX. WEIGHT			1096 lbs.	1,514 lbs.	1,514 lbs.	1514 lbs.	
PART NO.			1001102327	1001223435	1001192617	0930020	
MODEL	SN BREAKS	LOAD CHART BOOKLET					
JLG	642, 943, 1043, 1055, 1255 ONLY	Software, Chart Library	1001187087 (Ref No.)				
	742	ALL	100226012			.	
	943/1043	Without Outriggers	1001212420				.
		With Outriggers	1001212419				.
	1055	Prior To 0160074169	1001212227				.
		0160074169 - Present	1001211156				.
	1255	Prior To 0160074168	1001212225				.
		0160074168 - Present	1001211153				.
	1075	ALL	1001259238				.
	1644	ALL	1001233430		.	.	
1732	ALL	1001233431		.	.		
G5-18A	Quick coupler (hydraulic or manual)	1001102000	.				
SKYTRAK T4F	6036	0160069720 - 0160075649, incl 0160065792, 0160065798, 0160065824, 0160069383, 0160069411, 0160075653 & 0160075722	1001199500			.	
		0160075650 - Present, excl 0160075653 & 0160075722	1001211867			.	
	6042	0160069720 - 0160075656, incl 0160065792, 0160065798, 0160065824, 0160069383 & 0160069411	1001199504				.
		0160075657 - Present	1001211869				.
	8042	0160069722 - 0160075670, incl 0160065791, 0160065796, 0160065825, 0160065826, 0160069336, 0160069359 & 0160069441	1001199508				.
		0160075671 - Present	1001211871				.
	10042	0160069722 - 0160075987, incl 0160065791, 0160065796, 0160065825, 0160065826, 0160069336, 0160069359 & 0160069441	1001199512				.
		0160075988 - Present	1001211873				.
	10054	0160069722 - 0160075682, incl 0160065791, 0160065796, 0160065825, 0160065826, 0160069336, 0160069359, 0160069441 & 0160075696	1001199518				.
		0160075683 - Present, excl 0160075696	1001211875				.
12054	ALL	1001245474				.	

NOTES:

- Use only JLG approved attachments with proper material handler model/attachment load capacity charts displayed in the operator's cab.
- Never use your attachment as a work platform or personnel carrier.

Can't find the attachment you are looking for? Contact your JLG Aftermarket Parts representative at 1-877-JLG-LIFT or visit www.jlg.com.

Non-Current Production - Grapple Buckets, JLG
Available Through JLG Aftermarket Parts

BUCKET SIZE			96 in.	96 in.	96 in.	
CAPACITY			1.75 cu. yd.	2.35 cu. yd.	1.75 cu. yd.	
APPROX. WEIGHT			1740 lbs.	1554 lbs.	1514 lbs.	
PART NO.			0930021S*	0930004	0930020	
MODEL	SN BREAKS	LOAD CHART BOOKLET				
JLG	642	ALL	1001212421		•	
	619A	ALL	Consult Factory		•	
	723A	ALL	Consult Factory		•	
	G5-19A	ALL	Consult Factory		•	
	G6-23A	ALL	Consult Factory		•	
	G6-42A	Prior To 0160037722	1001105323	•		
		0160037722 - 0160040659	1001110401			•
		0160040678 - Present	1001130739			•
	G9-43A	Prior To 0160037671	1001105325	•		
		0160037671 - 0160040674, excl 0160040468 & 0160040672	1001110402			•
		0160040675 - Present, incl 0160040468 & 0160040672	1001130708			•
	G10-43A	0160037671 - 0160040674, excl 0160040468 & 0160040672	1001115257			•
		0160040675 - Present, incl 0160040468 & 0160040672	1001130844			•
	G10-55A	Prior To 0160037689	1001105707	•		
		0160037690 - Present, incl 0160038505, 0160038507, 0160038324, 0160038489 & 0160038493	10011151358			•
	G12-55A	Prior To 0160037689	1001105326	•		
		0160037689 - Present	1001115540			•
	G15-44A	Prior To 0160074142	1001194130			•
		0160074142 - Present	1001211953			•

* Includes Load Chart

Non-Current Production - Grapple Buckets, Gradall
Available Through JLG Aftermarket Parts

BUCKET SIZE			96 in.	
CAPACITY			1.75 cu. yd.	
APPROX. WEIGHT			1514 lbs.	
PART NO.			0930020	
MODEL	SN BREAKS	LOAD CHART BOOKLET		
GRADALL	534D-9	0160037689 - Present	1001110406	•
	534D-10	0160037689 - Present	1001110407	•
	544D	0160037689 - Present	1001110408	•
	G6-42P	0160037689 - Present	1001110405	•

NOTES:

- Use only JLG approved attachments with proper material handler model/attachment load capacity charts displayed in the operator's cab.
- Never use your attachment as a work platform or personnel carrier.

Can't find the attachment you are looking for? Contact your JLG Aftermarket Parts representative at 1-877-JLG-LIFT or visit www.jlg.com.

Non-Current Production - Grapple Buckets, SkyTrak
Available Through JLG Aftermarket Parts

BUCKET SIZE			96 in.	
CAPACITY			1.75 cu. yd.	
APPROX. WEIGHT			1514 lbs.	
PART NO.			0930020	
MODEL	SN BREAKS	LOAD CHART BOOKLET		
SKYTRAK	6036	0160031200 - 0160069719, excl 0160065792, 0160065798, 0160065824, 0160069383 & 0160069411	1001199500	•
	6042	0160031200 - 0160069719, excl 0160065792, 0160065798, 0160065824, 0160069383 & 0160069411	1001199504	•
	8042	0160031235 - 0160069721, excl 0160065791, 0160065796, 0160065825, 0160065826, 0160069336, 0160069359 & 0160069441	1001199508	•
	10042	0160031425 - 0160069721, excl 0160065791, 0160065796, 0160065825, 0160065826, 0160069336, 0160069359 & 0160069441	1001199512	•
	10054	0160031255 - 0160069721, excl 0160065791, 0160065796, 0160065825, 0160065826, 0160069336, 0160069359 & 0160069441	1001199518	•

Non-Current Production - Grapple Buckets, Lull
Available Through JLG Aftermarket Parts

BUCKET SIZE			96 in.	
CAPACITY			1.75 cu. yd.	
APPROX. WEIGHT			1514 lbs.	
PART NO.			0930020	
MODEL	SN BREAKS	LOAD CHART BOOKLET		
LULL	644E-42	0160037900 - Present	100110410	•
	944E-42	0160037794 - Present, incl 0160045421	100110411	•
	1044C-54SII	0160037794 - Present	100110409	•

NOTES:

- Use only JLG approved attachments with proper material handler model/attachment load capacity charts displayed in the operator's cab.
- Never use your attachment as a work platform or personnel carrier.

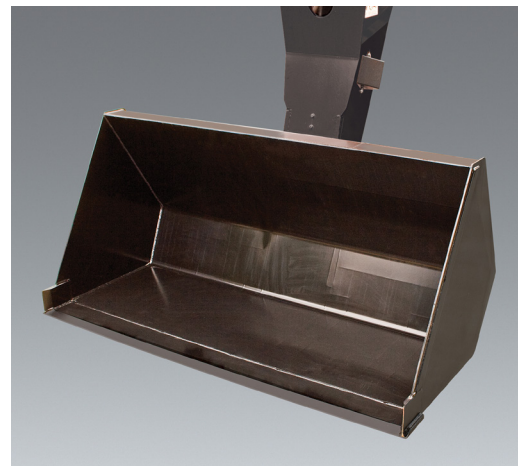
Can't find the attachment you are looking for? Contact your JLG Aftermarket Parts representative at 1-877-JLG-LIFT or visit www.jlg.com.

Material Bucket

Use the material bucket to scoop and carry loose material and debris like gravel or dirt. The material bucket can also be used for clean up around the job site. Material buckets are not designed for digging.

Features

- Available in different widths and capacities for various jobsite requirements
- Bucket teeth kits available for 0930008, 0930009, 0930015 and 0930016 material buckets (purchase part number 1001094612)



Current Production - Material Bucket

Available Through JLG Aftermarket Or With New Machine Orders

BUCKET WIDTH			72 in.	72 in.	73 in.	94 in.	94 in.	94 in.	96 in.	102 in.	
CAPACITY			1.0 cu. yd.	1.7 cu. yd.	1.0 cu. yd.	1.3 cu. yd.	2.6 cu. yd.	5.2 cu. yd.	1.5 cu. yd.	2.0 cu. yd.	
APPROX. WEIGHT			733 lbs.	838 lbs.	710 lbs.	2528 lbs.	1692 lbs.	2210 lbs.	899 lbs.	1089 lbs.	
PART NO.			1001100822	1001102323*	1001102324*	1001228427	1001192615	1001192616	1001100823	1001100824	
MODEL	SN BREAKS	LOAD CHART BOOKLET									
JLG	642, 943, 1043, 1055, 1255 ONLY	Software, Chart Library	1001187087 (Ref No.)								
	742	Without Outriggers	1001226012	.					.	.	
	943/1043	Without Outriggers	1001212420	.						.	.
		With Outriggers	1001212419	.						.	.
	1055	Prior To 0160074169	1001212227	.						.	.
		0160074169 - Present	1001211156	.						.	.
	1255	Prior To 0160074168	1001212225	.						.	.
		0160074168 - Present	1001211153	.						.	.
	1075	ALL	1001259238	.						.	.
	1644	ALL	1001233430				.	.	.		
1732	ALL	1001233431				.	.	.			
GS-18A	Quick coupler (hydraulic or manual)	1001102000		.	.						
SKYTRAK T4F	6036	0160069720 - 0160075649, incl 0160065792, 0160065798, 0160065824, 0160069383, 0160069411, 0160075653 & 0160075722	1001199500	.					.	.	
		0160075650 - Present, excl 0160075653 & 0160075722	1001211867	.					.	.	
	6042	0160069720 - 0160075656, incl 0160065792, 0160065798, 0160065824, 0160069383 & 0160069411	1001199504	.						.	.
		0160075657 - Present	1001211869	.						.	.
	8042	0160069722 - 0160075670, incl 0160065791, 0160065796, 0160065825, 0160065826, 0160069336, 0160069359 & 0160069441	1001199508	.						.	.
		0160075671 - Present	1001211871	.						.	.
	10042	0160069722 - 0160075987, incl 0160065791, 0160065796, 0160065825, 0160065826, 0160069336, 0160069359 & 0160069441	1001199512	.						.	.
		0160075988 - Present	1001211873	.						.	.
	10054	0160069722 - 0160075682, incl 0160065791, 0160065796, 0160065825, 0160065826, 0160069336, 0160069359, 0160069441 & 0160075696	1001199518	.						.	.
		0160075683 - Present, excl 0160075696	1001211875	.						.	.
12054	ALL	1001245474	.						.	.	

* Replacement cutting edge not available separately

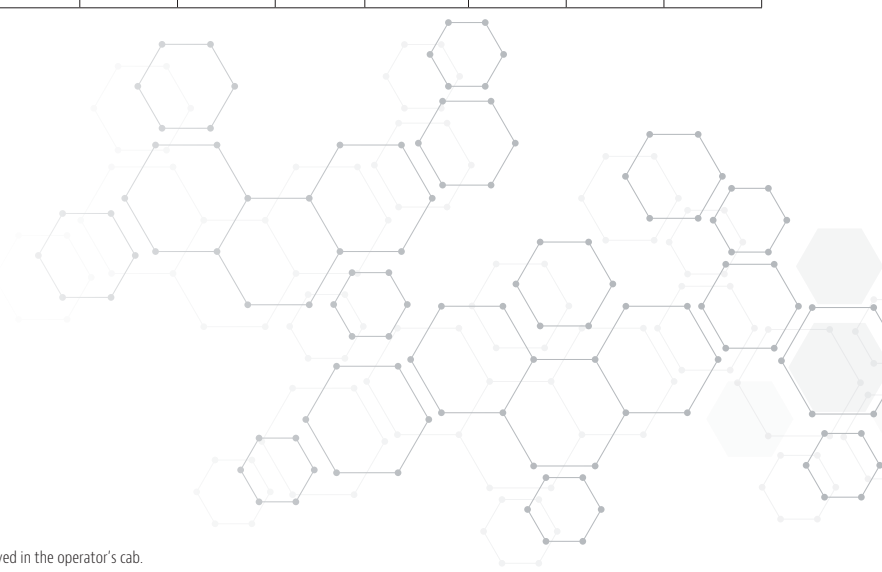
- NOTES:
- Use only JLG approved attachments with proper material handler model/attachment load capacity charts displayed in the operator's cab.
 - Never use your attachment as a work platform or personnel carrier.

Can't find the attachment you are looking for? Contact your JLG Aftermarket Parts representative at 1-877-JLG-LIFT or visit www.jlg.com.

ATTACHMENTS

Non-Current Production - Material Buckets, JLG Available Through JLG Aftermarket Parts

BUCKET WIDTH			60 in.	72 in.	74 in.	83 in.	83 in.	96 in.	96 in.	96 in.	102 in.	102 in.	
CAPACITY			.75 cu. yd.	1.0 cu. yd.	1.25 cu. yd.	1.05 cu. yd.	1.96 cu. yd.	1.18 cu. yd.	1.5 cu. yd.	2.35 cu. yd.	1.25 cu. yd.	2.0 cu. yd.	
APPROX. WEIGHT			500 lbs.	733 lbs.	675 lbs.	639 lbs.	940 lbs.	712 lbs.	899 lbs.	1041 lbs.	720 lbs.	1089 lbs.	
PART NO.			91405054	1001100822	91405055	0930008	0930009	0930015	1001100823	0930016	91405071	1001100824	
MODEL	SN BREAKS	LOAD CHART BOOKLET											
JLG	642	ALL	1001212421	•					•			•	
	619A	ALL	Consult Factory			•	•	•					
	723A	ALL	Consult Factory					•		•			
	G5-19A	ALL	Consult Factory			•	•						
	G6-23A	ALL	Consult Factory					•		•			
	G6-42A	Prior To 0160037722	1001105323	•		•						•	
		0160037722 - 0160040659	1001106001		•					•			•
		0160040678 - Present	1001130793		•					•			•
	G9-43A	Prior To 0160037671	1001105325	•		•						•	
		0160037671 - 0160040674, excl 0160040468 & 0160040672	1001106002		•					•			•
		0160040675 - Present, incl 0160040468 & 0160040672	1001130663		•					•			•
	G10-43A	Prior To 0160037671	1001130935	•		•						•	
		0160037671 - 0160040674, excl 0160040468 & 0160040672	1001131013		•					•			•
		0160040675 - Present, incl 0160040468 & 0160040672	1001130935		•					•			•
	G10-55A	Prior To 0160037689	1001105707	•		•						•	
		0160037690 - 0160038486, incl 0160038505 & 0160038507, excl 0160038324, 0160038489 & 0160038493	1001106003		•					•			•
		0160038500 - Present, incl 0160038324, 0160038489 & 0160038493; excl 0160038505 & 0160038507	1001115135		•					•			•
	G12-55A	Prior To 0160037689	1001105326	•		•						•	
		0160037689 - 0160038533	1001106004		•					•			•
		0160038538 - Present	1001115536		•					•			•
G15-44A	Prior To 0160074142	1001194130		•					•			•	
	0160074142 - Present	1001211953		•					•			•	
TF6-42	ALL	Consult Factory	•		•						•		



NOTES:

- Use only JLG approved attachments with proper material handler model/attachment load capacity charts displayed in the operator's cab.
- Never use your attachment as a work platform or personnel carrier.

Can't find the attachment you are looking for? Contact your JLG Aftermarket Parts representative at 1-877-JLG-LIFT or visit www.jlg.com.

Non-Current Production - Material Buckets, Gradall
Available Through JLG Aftermarket Parts

BUCKET WIDTH			60 in.	60 in.	72 in.	74 in.	74 in.	96 in.	102 in.	102 in.
CAPACITY			.75 cu yd.	.75 cu yd.	1.0 cu. yd.	1.25 cu. yd.	1.25 cu. yd.	1.5 cu. yd.	1.25 cu. yd.	2 cu. yd.
APPROX. WEIGHT			465 lbs.	500 lbs.	733 lbs.	643 lbs.	675 lbs.	899 lbs.	720 lbs.	1089 lbs.
PART NO.			90455049	91405054	1001100822	90555020	91405055	1001100823	91405071	1001100824
MODEL	SN BREAKS	LOAD CHART BOOKLET								
GRADALL	522D/524D	ALL	Consult Factory	•			•			
	534C-10	ALL	Consult Factory	•			•			
	534D-6	ALL	Consult Factory	•			•			
	534D-9	Prior To 0160037689	1001102719	•			•			
		Prior To 0160037689	1001102720	•			•			
	534D-10	Prior To 0160037689	1001102721	•			•			
		0160037689 - Present	1001112753			•		•		•
	544D	Prior To 0160037689	1001102721			•		•		•
		0160037689 - Present	1001106008	•			•			
	G6-42P	Prior To 0160037689	1001105324		•			•		•
0160037689 - Present		1001106005			•		•		•	

Non-Current Production - Material Buckets, SkyTrak
Available Through JLG Aftermarket Parts

BUCKET WIDTH			72 in.	96 in.	96 in.	102 in.
CAPACITY			1.0 cu. yd.	1.25 cu. yd.	1.5 cu. yd.	2.0 cu. yd.
APPROX. WEIGHT			733 lbs.	795 lbs.	899 lbs.	1089 lbs.
PART NO.			1001100822	7110744	1001100823	1001100824
MODEL	BREAK	LOAD CHART BOOKLET				
SKYTRAK	4266	ALL	Consult Factory		•	
	4270	ALL	Consult Factory		•	
	4290	ALL	Consult Factory		•	
	5028	ALL	Consult Factory		•	
	6036	Prior To 0160031200	Consult Factory		•	
		0160031200 - 0160069719, excl 0160065792, 0160065798, 0160065824, 0160069383 & 0160069411	1001199500	•		•
	6042	Prior To 0160031200	Consult Factory		•	
		0160031200 - 0160069719, excl 0160065792, 0160065798, 0160065824, 0160069383 & 0160069411	1001199504	•		•
	8042	Prior To 0160031235	Consult Factory		•	
		0160031235 - 0160069721, excl 0160065791, 0160065796, 0160065825, 0160065826, 0160069336, 0160069359 & 0160069441	1001199508	•		•
	10042	Prior To 0160031425	Consult Factory		•	
		0160031425 - 0160069721, excl 0160065791, 0160065796, 0160065825, 0160065826, 0160069336, 0160069359 & 0160069441	1001199512	•		•
	10054	Prior To 0160031255	Consult Factory		•	
		0160031255 - 0160069721, excl 0160065791, 0160065796, 0160065825, 0160065826, 0160069336, 0160069359 & 0160069441	1001199518	•		•

NOTES:

· Use only JLG approved attachments with proper material handler model/attachment load capacity charts displayed in the operator's cab.

· Never use your attachment as a work platform or personnel carrier.

Can't find the attachment you are looking for? Contact your JLG Aftermarket Parts representative at 1-877-JLG-LIFT or visit www.jlg.com.

ATTACHMENTS

Non-Current Production - Material Buckets, Lull Available Through JLG Aftermarket Parts

BUCKET WIDTH			72 in.	96 in.	96 in.	96 in.	102 in.	
CAPACITY			1.0 cu. yd.	1.25 cu. yd.	1.25 cu. yd.	1.5 cu. yd.	2.0 cu. yd.	
APPROX. WEIGHT			733 lbs.	540 lbs.	795 lbs.	899 lbs.	1089 lbs.	
PART NO.			1001100822	1101435	7110744	1001100823	1001100824	
MODEL	SN BREAKS	LOAD CHART BOOKLET						
LULL	644B-37	ALL	Consult Factory		•			
	644B-42	ALL	Consult Factory		•			
	644D-34	ALL	Consult Factory		•			
	644E-42	Prior To 0160031500	7300628			•		
		0160037900 - Present	1001106009	•			•	•
	844C-42	ALL	Consult Factory		•			
	944E-42	Prior To 0160031500	7301586			•		
		0160037794 - Present, incl 0160045421	1001134329	•			•	•
	1044C-54 SII	Prior To 0160037893	1001105327		•			
		0160037794 - Present	1001106011	•			•	•
	6K-37	ALL	Consult Factory		•			
	6K-42	ALL	Consult Factory		•			
	8K-42	ALL	Consult Factory		•			
	10K-42/10K-54	ALL	Consult Factory		•			

NOTES:

- Use only JLG approved attachments with proper material handler model/attachment load capacity charts displayed in the operator's cab.
- Never use your attachment as a work platform or personnel carrier.

Can't find the attachment you are looking for? Contact your JLG Aftermarket Parts representative at 1-877-JLG-LIFT or visit www.jlg.com.

Coupler Mounted Lifting Hook

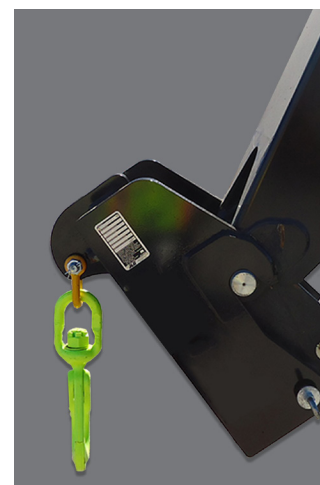
Optimize the use of your JLG telehandler with the new coupler mounted lifting hook. The lifting hook attaches directly to your machine, without the need of a carriage or forks. The lifting hook allows the ability to lift a suspended load without the obstruction of forks extending beyond the attachment.

Features

- Directly mounts onto machine coupler
- Picks up and carries loads as easily as a fork mounted lifting hook
- Increased visibility of load for operator

Specifications

- Maximum capacity: 15,000 lbs
- Maximum weight: 178 lbs
- Distance to center of gravity: 4.4 in



Current Production - Coupler Mounted Lifting Hook
Available Through JLG Aftermarket Or With New Machine Orders

CAPACITY			5,500 lbs.	15,000 lbs.	16,755 lbs.	
APPROX. WEIGHT			133 lbs.	178 lbs.	354 lbs.	
PART NO.			1001242510	1001207606	1001192700	
MODEL	SN BREAKS	LOAD CHART BOOKLET				
JLG	642, 943, 1043, 1055, 1255 ONLY	Software, Chart Library	1001187087 (Ref No.)			
	742	ALL	1001226012	•		
	943/1043	Without Outriggers	1001212420		•	
		With Outriggers	1001212419		•	
	1055	Prior To 0160074169	1001212227		•	
		0160074169 - Present	1001211156		•	
	1255	Prior To 0160074168	1001212225		•	
		0160074168 - Present	1001211153		•	
	1075	ALL	1001259238		•	
	1644	ALL	1001233430			•
1732	ALL	1001233431			•	
G5-18A	with the Universal (skid steer) quick coupler 0160040809 - Present	1001126677	•	•		
SKYTRAK™	6036	0160069720 - 0160075649, incl 0160065792, 0160065798, 0160065824, 0160069383, 0160069411, 0160075653 & 0160075722	1001199500		•	
		0160075650 - Present, excl 0160075653 & 0160075722	1001211867		•	
	6042	0160069720 - 0160075656, incl 0160065792, 0160065798, 0160065824, 0160069383 & 0160069411	1001199504		•	
		0160075657 - Present	1001211869		•	
	8042	0160069722 - 0160075670, incl 0160065791, 0160065796, 0160065825, 0160065826, 0160069336, 0160069359 & 0160069441	1001199508		•	
		0160075671 - Present	1001211871		•	
	10042	0160069722 - 0160075987, incl 0160065791, 0160065796, 0160065825, 0160065826, 0160069336, 0160069359 & 0160069441	1001199512		•	
		0160075988 - Present	1001211873		•	
	10054	0160069722 - 0160075682, incl 0160065791, 0160065796, 0160065825, 0160065826, 0160069336, 0160069359, 0160069441 & 0160075696	1001199518		•	
		0160075683 - Present, excl 0160075696	1001211875		•	
12054	ALL	1001245474		•		

NOTES:

- Use only JLG approved attachments with proper material handler model/attachment load capacity charts displayed in the operator's cab.
- Never use your attachment as a work platform or personnel carrier.

Can't find the attachment you are looking for? Contact your JLG Aftermarket Parts representative at 1-877-JLG-LIFT or visit www.jlg.com.

ATTACHMENTS

Non-Current Production - Coupler Mounted Lifting Hook, JLG Available Through JLG Aftermarket Parts

CAPACITY			15,000 lbs.	
APPROX. WEIGHT			178 lbs.	
PART NO.			1001207606	
MODEL	SN BREAKS	LOAD CHART BOOKLET		
JLG	642	ALL	1001212421	•
	G6-42A	0160037722-0160040659	100110401	•
		0160040678 - Present	1001130739	•
	G9-43A	0160037671 - 0160040674, excl 0160040468 & 0160040672	100110402	•
		0160040675 - Present, incl 0160040468 & 0160040672	1001130708	•
	G10-43A	0160037671 - 0160040674, excl 0160040468 & 0160040672	100115257	•
		0160040675 - Present, incl 0160040468 & 0160040672	1001130844	•
	G10-55A	0160037690 - Present, incl 0160038505, 0160038507, 0160038324, 0160038489 & 0160038493	100115138	•
	G12-55A	0160037689 - Present	100115540	•
	G15-44A	Prior To 0160074142	1001194130	•
		0160074142 - Present	1001211953	•



NOTES:

- Use only JLG approved attachments with proper material handler model/attachment load capacity charts displayed in the operator's cab.
- Never use your attachment as a work platform or personnel carrier.

Can't find the attachment you are looking for? Contact your JLG Aftermarket Parts representative at 1-877-JLG-LIFT or visit www.jlg.com.

Fork Mounted Lifting Hook

The fork mounted lifting hook provides the operator with the ability to lift and lower suspended loads without removing the carriage.

Features

- Not for use with cubing or block forks
- Maximum fork size: 2.36 in. x 7.09 in.
- Use standard load chart for all fork mounted lifting hooks.
- Fork drop must be at least 3.75" below bottom of carriage to lock pin.



Current Production - Fork Mounted Lifting Hook
Available Through JLG Aftermarket Or With New Machine Orders

LIFTING CAPACITY			12,000 lbs.	15,000 lbs.
PART NO.			1001097205	1001193803
MODEL	SN BREAKS			
JLG	742	ALL	.	
	943/1043	Without Outriggers	.	
		With Outriggers	.	
	1055	Prior To 0160074169	.	
		0160074169 - Present	.	
	1255	Prior To 0160074168	.	
		0160074168 - Present	.	
	1075	ALL	.	
	1644	ALL		.
1732	ALL		.	
G5-18-A	Universal (skid steer) quick coupler; 0160040809-Present	.		
SKYTRAK T4F	6036	0160069720 - 0160075649, incl 0160065792, 0160065798, 0160065824, 0160069383, 0160069411, 0160075653 & 0160075722	.	
		0160075650 - Present, excl 0160075653 & 0160075722	.	
	6042	0160069720 - 0160075656, incl 0160065792, 0160065798, 0160065824, 0160069383 & 0160069411	.	
		0160075657 - Present	.	
	8042	0160069722 - 0160075670, incl 0160065791, 0160065796, 0160065825, 0160065826, 0160069336, 0160069359 & 0160069441	.	
		0160075671 - Present	.	
	10042	0160069722 - 0160075987, incl 0160065791, 0160065796, 0160065825, 0160065826, 0160069336, 0160069359 & 0160069441	.	
		0160075988 - Present	.	
10054	0160069722 - 0160075682, incl 0160065791, 0160065796, 0160065825, 0160065826, 0160069336, 0160069359, 0160069441 & 0160075696	.		
	0160075683 - Present, excl 0160075696	.		
12054		.		

Use Appropriate Carriage Attachment Load Chart

NOTES:

- Use only JLG approved attachments with proper material handler model/attachment load capacity charts displayed in the operator's cab.
- Never use your attachment as a work platform or personnel carrier.

Can't find the attachment you are looking for? Contact your JLG Aftermarket Parts representative at 1-877-JLG-LIFT or visit www.jlg.com.

ATTACHMENTS

Non-Current Production - Fork Mounted Lifting Hook, JLG Available Through JLG Aftermarket Parts

LIFTING CAPACITY		8,800 lbs.	12,000 lbs.	15,000 lbs.	
PART NO.		2700118	1001097205	1001193803	
MODEL	SN BREAKS				
JLG	642	ALL	.		
	619A	ALL	.		
	723A	ALL	.		
	G5-19A	ALL	.		
	G6-23A	ALL	.		
	G6-42A	0160037722 - 0160040659		.	
		0160040678 - Present		.	
	G9-43A	0160037671 - 0160040674, excl 0160040468 & 0160040672		.	
		0160040675 - Present, incl 0160040468 & 0160040672		.	
	G10-43A	0160037671 - 0160040674, excl 0160040468 & 0160040672		.	
		0160040675 - Present, incl 0160040468 & 0160040672		.	
	G10-55A	0160037690 - 0160038486, incl 0160038505 & 0160038507, excl 0160038324, 0160038489 & 0160038493		.	
		0160038500 - Present, incl 0160038324, 0160038489 & 0160038493; excl 0160038505 & 0160038507		.	
	G12-55A	0160037689-0160038533		.	
0160038538 - Present			.		
G15-44A	Prior To 0160074142			.	
	0160074142 - Present			.	

Non-Current Production - Fork Mounted Lifting Hook, Gradall Available Through JLG Aftermarket Parts

LIFTING CAPACITY		12,000 lbs.	
PART NO.		1001097205	
MODEL	SN BREAKS		
GRADALL	522D/524D	ALL	.
	534C-9	ALL	.
	534C-10	ALL	.
	534D-6	ALL	.
	534D-9	0160037689 - Present	.
	534D-10	0160037689 - Present	.
	544C	ALL	.
	544D	0160037689 - Present	.
	G6-42P	0160037689 - Present	.

Use Appropriate Carriage Attachment Load Chart



NOTES:

- Use only JLG approved attachments with proper material handler model/attachment load capacity charts displayed in the operator's cab.
- Never use your attachment as a work platform or personnel carrier.

Can't find the attachment you are looking for? Contact your JLG Aftermarket Parts representative at 1-877-JLG-LIFT or visit www.jlg.com.

Non-Current Production - Fork Mounted Lifting Hook, SkyTrak

Available Through JLG Aftermarket Parts

LIFTING CAPACITY		12,000 lbs.	
PART NO.		1001097205	
MODEL	SN BREAKS		
SKYTRAK	4266	ALL	•
	4270	ALL	•
	4290	ALL	•
	5028	ALL	•
	6036	0160031200 - 0160069719, excl 0160065792, 0160065798, 0160065824, 0160069383 & 0160069411	•
	6042	0160031200 - 0160069719, excl 0160065792, 0160065798, 0160065824, 0160069383 & 0160069411	•
	8042	0160031235 - 0160069721, excl 0160065791, 0160065796, 0160065825, 0160065826, 0160069336, 0160069359 & 0160069441	•
	10042	0160031425 - 0160069721, excl 0160065791, 0160065796, 0160065825, 0160065826, 0160069336, 0160069359 & 0160069441	•
	10054	0160031255 - 0160069721, excl 0160065791, 0160065796, 0160065825, 0160065826, 0160069336, 0160069359 & 0160069441	•

Non-Current Production - Fork Mounted Lifting Hook, Lull

Available Through JLG Aftermarket Parts

LIFTING CAPACITY		12,000 lbs.	
PART NO.		1001097205	
MODEL	SN BREAKS		
LULL	644B-37	ALL	•
	644B-42	ALL	•
	644D-34	ALL	•
	644E-42	0160037900 - Present	•
	844C-42	ALL	•
	944E-42	0160037794 - Present, incl 0160045421	•
	1044C-42	ALL	•
	1044C-54	ALL	•
	1044C-54 SII	Prior To 0160037793	•
	1044C-54 SII	0160037794 - Present	•

Use Appropriate Carriage Attachment Load Chart



NOTES:

- Use only JLG approved attachments with proper material handler model/attachment load capacity charts displayed in the operator's cab.
- Never use your attachment as a work platform or personnel carrier.

Can't find the attachment you are looking for? Contact your JLG Aftermarket Parts representative at 1-877-JLG-LIFT or visit www.jlg.com.

Fork Mounted Work Platform

Simply slide the forks into the work platform pockets, secure the locking pins and begin lifting people to working heights. The only ANSI approved fork mounted platform for JLG telehandlers.

Features

- Only for use with 48 in. pallet forks
- 4 ft. x 8 ft. platform
- Side entry with removable front rail
- 1000 lbs. capacity
- 3 lanyard attach points
- Fork pocket dimensions: 2.5 in. x 6.5 in. x 48 in.
- Fork drop must be 3.75" below carriage to be able to lock pin.



Current Production - Fork Mounted Work Platform

Available Through JLG Aftermarket Or With New Machine Orders

LENGTH		48 in.	
CAPACITY		1000 lbs.	
VERSION		English	
PART NO.		1001238653S	
MODEL	SN BREAKS		
JLG	742	Without Outriggers	•
	943/1043	Without Outriggers	•
		With Outriggers	•
	1055	Prior To 0160074169	•
		0160074169 - Present	•
	1255	Prior To 0160074168	•
		0160074168 - Present	•
	1075	ALL	•
1644/1732	ALL	•	
G5-18A	ALL	•	
SKYTRAK T4F	6036	0160069720 - 0160075649, incl 0160065792, 0160065798, 0160065824, 0160069383, 0160069411, 0160075653 & 0160075722	•
		0160075650 - Present, excl 0160075653 & 0160075722	•
	6042	0160069720 - 0160075656, incl 0160065792, 0160065798, 0160065824, 0160069383 & 0160069411	•
		0160075657 - Present	•
	8042	0160069722 - 0160075670, incl 0160065791, 0160065796, 0160065825, 0160065826, 0160069336, 0160069359 & 0160069441	•
		0160075671 - Present	•
	10042	0160069722 - 0160075987, incl 0160065791, 0160065796, 0160065825, 0160065826, 0160069336, 0160069359 & 0160069441	•
		0160075988 - Present	•
	10054	0160069722 - 0160075682, incl 0160065791, 0160065796, 0160065825, 0160065826, 0160069336, 0160069359, 0160069441 & 0160075696	•
		0160075683 - Present, excl 0160075696	•
12054	ALL	•	

Use Appropriate Carriage Attachment Load Chart

NOTES:

• Use only JLG approved attachments with proper material handler model/attachment load capacity charts displayed in the operator's cab.

Can't find the attachment you are looking for? Contact your JLG Aftermarket Parts representative at 1-877-JLG-LIFT or visit www.jlg.com.

Non-Current Production - Fork Mounted Work Platform, JLG
Available Through JLG Aftermarket Parts

LENGTH		48 in.	
CAPACITY		1000 lbs.	
VERSION		English	
PART NO.		1001238653S	
	MODEL	SN BREAKS	
JLG	642	ALL	
	619A	ALL	
	723A	ALL	
	G5-19A	ALL	
	G6-23A	ALL	
	G6-42A	0160037722 - 0160040659	.
		0160040678 - Present	.
	G9-43A	0160037671 - 0160040674, excl 0160040468 & 0160040672	.
		0160040675 - Present, incl 0160040468 & 0160040672	.
	G10-43A	0160037671 - 0160040674, excl 0160040468 & 0160040672	.
		0160040675 - Present, incl 0160040468 & 0160040672	.
	G10-55A	0160037690 - 0160038486, incl 0160038505 & 0160038507, excl 0160038324, 0160038489 & 0160038493	.
		0160038500 - Present, incl 0160038324, 0160038489 & 0160038493, excl 0160038505 & 0160038507	.
	G12-55A	0160037689 - 0160038533	.
		0160038538 - Present	.
	G15-44A	Prior To 0160074142	.
0160074142 - Present		.	
TF6-42	ALL	.	

Non-Current Production - Fork Mounted Work Platform, Gradall
Available Through JLG Aftermarket Parts

LENGTH		48 in.	
CAPACITY		1000 lbs.	
VERSION		English	
PART NO.		1001238653S	
	MODEL	SN BREAKS	
GRADALL	522/524D	ALL	
	534C9	ALL	
	534C10	ALL	
	534D6	ALL	
	534D-9	Prior To 0160037689	.
		0160037689 - Present	.
	534D-10	Prior To 0160037689	.
		0160037689 - Present	.
	534D10-45	ALL	
	544C	ALL	
	544D	Prior To 0160037689	.
		0160037689 - Present	.
	544D10-55	ALL	
G6-42P	Prior To 0160037689	.	

Use Appropriate Carriage Attachment Load Chart

NOTES:

- Use only JLG approved attachments with proper material handler model/attachment load capacity charts displayed in the operator's cab.

Can't find the attachment you are looking for? Contact your JLG Aftermarket Parts representative at 1-877-JLG-LIFT or visit www.jlg.com.

Non-Current Production - Fork Mounted Work Platform, SkyTrak
Available Through JLG Aftermarket Parts

LENGTH		48 in.	
CAPACITY		1000 lbs.	
VERSION		English	
PART NO.		1001238653S	
MODEL	SN BREAKS		
SKYTRAK	4266	ALL	•
	4270	ALL	•
	4290	ALL	•
	5028	ALL	•
	6036	0160031200 - 0160069719, excl 0160065792, 0160065798, 0160065824, 0160069383 & 0160069411	•
	6042	0160031200 - 0160069719, excl 0160065792, 0160065798, 0160065824, 0160069383 & 0160069411	•
	8042	0160031235 - 0160069721, excl 0160065791, 0160065796, 0160065825, 0160065826, 0160069336, 0160069359 & 0160069441	•
	10042	0160031425 - 0160069721, excl 0160065791, 0160065796, 0160065825, 0160065826, 0160069336, 01600669359 & 0160069441	•
	10054	0160031255 - 0160069721, excl 0160065791, 0160065796, 0160065825, 0160065826, 0160069336, 0160069359 & 0160069441	•

Non-Current Production - Fork Mounted Work Platform, Lull
Available Through JLG Aftermarket Parts

LENGTH		48 in.	
CAPACITY		1000 lbs.	
VERSION		English	
PART NO.		1001238653S	
MODEL	SN BREAKS		
LULL	644B-37	ALL	•
	644B-42	ALL	•
	644D-34	ALL	•
	644E-42	0160037900 - Present	•
	844C-42	ALL	•
	944E-42	0160037794 - Present, incl 0160045421	•
	1044C-42	ALL	•
	1044C-54	0160037893 - Present	•
	1044C-54 SII	0160037794 - Present	•

Use Appropriate Carriage Attachment Load Chart



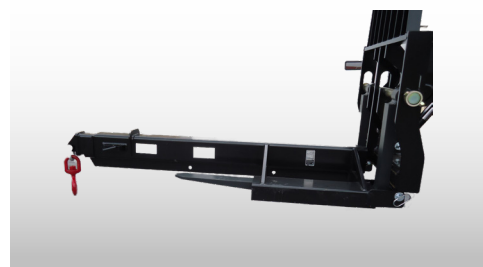
NOTES:

• Use only JLG approved attachments with proper material handler model/attachment load capacity charts displayed in the operator's cab.

Can't find the attachment you are looking for? Contact your JLG Aftermarket Parts representative at 1-877-JLG-LIFT or visit www.jlg.com.

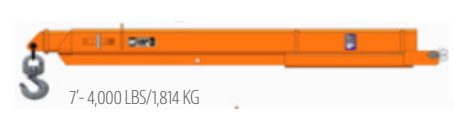
Fork Mounted Extendable Truss Boom

The Fork-Mounted Extendable Truss attachment is ideal for metal building erection, setting wooden trusses, putting up post frame building and many more "low rise" applications. This attachment is designed to mount on most existing forks, and is extendable, allowing for convenient lifting and placing of objects around the worksite.



Features

- Designed to accommodate a maximum fork size of 2.36 x 7 x 72 in
- Fits JLG and SkyTrak Models
- Fork Mounted Extendable Truss Load Chart advising length and capacity restrictions depicted below



Current Production - Truss Boom

Available Through JLG Aftermarket Or With New Machine Orders

LENGTH			Adjustable	
WINCH			NO	
CAPACITY			8,000 lbs.	
PART NO.			1001230241	
MODEL	SN BREAKS	LOAD CHART BOOKLET		
JLG	742	ALL	1001226012	•
	943/1043	Without Outriggers	1001212420	•
		With Outriggers	1001212419	•
	1055	Prior To 0160074169	1001212227	•
		0160074169 - Present	1001211156	•
	1255	Prior To 0160074168	1001212225	•
0160074168 - Present		1001211153	•	
1075	ALL	1001259238	•	
SKYTRAK 74F	6036	0160069720 - 0160075649, incl 0160065792, 0160065798, 0160065824, 0160069383, 0160069411, 0160075653 & 0160075722	1001199500	•
		0160075650 - Present, excl 0160075653 & 0160075722	1001211867	•
	6042	0160069720 - 0160075656, incl 0160065792, 0160065798, 0160065824, 0160069383 & 0160069411	1001199504	•
		0160075657 - Present	1001211869	•
	8042	0160069722 - 0160075670, incl 0160065791, 0160065796, 0160065825, 0160065826, 0160069336, 0160069359 & 0160069441	1001199508	•
		0160075671 - Present	1001211871	•
	10042	0160069722 - 0160075987, incl 0160065791, 0160065796, 0160065825, 0160065826, 0160069336, 0160069359 & 0160069441	1001199512	•
		0160075988 - Present	1001211873	•
	10054	0160069722 - 0160075682, incl 0160065791, 0160065796, 0160065825, 0160065826, 0160069336, 0160069359, 0160069441 & 0160075696	1001199518	•
		0160075683 - Present, excl 0160075696	1001211875	•
12054	ALL	1001259238	•	

NOTES:

• Use only JLG approved attachments with proper material handler model/attachment load capacity charts displayed in the operator's cab.

Can't find the attachment you are looking for? Contact your JLG Aftermarket Parts representative at 1-877-JLG-LIFT or visit www.jlg.com.

Material Handling Arm

Optimize the use of your telehandler with the JLG material handling arm. The three-way adjustable arm allows your machine more movement and versatility, adding to jobsite productivity and efficiency.

The material handling arm is excellent for various industries, including: construction, civil engineering applications, contractors and the rental industry.

Features

- Telescoping capabilities in three locked positions.
- Multiple lift points allow the material handling arm to handle different load lengths and weights
 - Fully extended: 2000 lbs lift capacity
 - Mid-boom extension: 3000 lbs lift capacity
 - Fully retracted: 4000 lbs lift capacity
- Arm extends and retracts manually for reliable operation.



Specifications

- Distance to center of gravity: 3.7 inches

Current Production - Material Handling Arm

Available Through JLG Aftermarket Or With New Machine Orders

CAPACITY		2000 - 4000 lbs.		
WEIGHT		952 lbs.		
PART NO.		1001176515		
MODEL	SN BREAKS	LOAD CHART BOOKLET		
JLG	642, 943, 1043, 1055, 1255 ONLY	Software, Chart Library	1001187087 (Ref No)	
	742	ALL	1001226012	-
	943/1043	Without Outriggers	1001212420	-
		With Outriggers	1001212419	-
	1055	Prior To 0160074169	1001212227	-
		0160074169 - Present	1001211156	-
	1255	Prior To 0160074168	1001212225	-
		0160074168 - Present	1001211153	-
1075	ALL	1001259238	-	
SKYTRAK T4F	6036	0160069720 - 0160075649, incl 0160065792, 0160065798, 0160065824, 0160069383, 0160069411, 0160075653 & 0160075722	1001199500	-
		0160075650 - Present, excl 0160075653 & 0160075722	1001211867	-
	6042	0160069720 - 0160075656, incl 0160065792, 0160065798, 0160065824, 0160069383 & 0160069411	1001199504	-
		0160075657 - Present	1001211869	-
	8042	0160069722 - 0160075670, incl 0160065791, 0160065796, 0160065825, 0160065826, 0160069336, 0160069359 & 0160069441	1001199508	-
		0160075671 - Present	1001211871	-
	10042	0160069722 - 0160075987, incl 0160065791, 0160065796, 0160065825, 0160065826, 0160069336, 0160069359 & 0160069441	1001199512	-
		0160075988 - Present	1001211873	-
	10054	0160069722 - 0160075682, incl 0160065791, 0160065796, 0160065825, 0160065826, 0160069336, 0160069359, 0160069441 & 0160075696	1001199518	-
		0160075683 - Present, excl 0160075696	1001211875	-
12054	ALL	1001245474	-	

NOTES:

- Use only JLG approved attachments with proper material handler model/attachment load capacity charts displayed in the operator's cab.
- Never use your attachment as a work platform or personnel carrier.

Can't find the attachment you are looking for? Contact your JLG Aftermarket Parts representative at 1-877-JLG-LIFT or visit www.jlg.com.

Non-Current Production - Material Handling Arm, JLG
Available Through JLG Aftermarket Parts

CAPACITY			2000 - 4000 lbs.	
WEIGHT			952 lbs.	
JLG PART NO.			1001176515	
MODEL	SN BREAKS	LOAD CHART BOOKLET		
JLG	642	ALL	1001212421	•
	G6-42A	0160037722 - 0160040659	1001110401	•
		0160040678 - Present	1001130739	•
	G9-43A	0160037671 - 0160040674, excl 0160040468 & 0160040672	1001110402	•
		0160040675 - Present, incl 0160040468 & 0160040672	1001130708	•
	G10-43A	0160037671 - 0160040674, excl 0160040468 & 0160040672	1001115257	•
		0160040675 - Present, incl 0160040468 & 0160040672	1001130844	•
	G10-55A	0160037690 - Present, incl 0160038505, 0160038507, 0160038324, 0160038489 & 0160038493	1001115138	•
G12-55A	0160037689 - Present	1001115540	•	

Non-Current Production - Material Handling Arm, SkyTrak
Available Through JLG Aftermarket Parts

CAPACITY			2000 - 4000 lbs.	
WEIGHT			952 lbs.	
JLG PART NO.			1001176515	
MODEL	SN BREAKS	LOAD CHART BOOKLET		
SKYTRAK	6036	0160031200 - 0160069719, excl 0160065792, 0160065798, 0160065824, 0160069383 & 0160069411	1001199500	•
	6042	0160031200 - 0160069719, excl 0160065792, 0160065798, 0160065824, 0160069383 & 0160069411	1001199504	•
	8042	0160031235 - 0160069721, excl 0160065791, 0160065796, 0160065825, 0160065826, 0160069336, 0160069359 & 0160069441	1001199508	•
	10042	0160031425 - 0160069721, excl 0160065791, 0160065796, 0160065825, 0160065826, 0160069336, 0160069359 & 0160069441	1001199512	•
	10054	0160031255 - 0160069721, excl 0160065791, 0160065796, 0160065825, 0160065826, 0160069336, 0160069359 & 0160069441	1001199518	•



NOTES:

- Use only JLG approved attachments with proper material handler model/attachment load capacity charts displayed in the operator's cab.
- Never use your attachment as a work platform or personnel carrier.

Can't find the attachment you are looking for? Contact your JLG Aftermarket Parts representative at 1-877-JLG-LIFT or visit www.jlg.com.

Pipe Grapple

Optimize the use of your Telehandler with the JLG Pipe Grapple. The Pipe Grapple handles various pipe diameters and configurations. The arms fold down on the pipe/poles to secure and prevent the load from rolling off or tipping sideways. The arm design offers the most versatility for handling various diameters and lengths. When idle, the arm assembly pivots to the full vertical position so the truck can be utilized for typical loads.

Features

- Can handle long pipe or pole material efficiently
- Help to stabilize a load of long pipes or poles
- Specially designed clamping arms mounted on top of carriage

Specifications

- 72" carriage
- 48" Forks (ITA - hook mounted)
- 2" - 30" pipe diameter



Current Production - Pipe Grapple
Available Through JLG Aftermarket Or With New Machine Orders

CARRIAGE SIZE			72 in.	96 in.
CAPACITY			6000 lbs.	8,000 lbs.
APPROX. WEIGHT			1701 lbs.	2,060 lbs.
PART NO.			1001142247	1001192722
MODEL	SN BREAKS	LOAD CHART BOOKLET		
JLG	1055, 1255 ONLY	Software, Chart Library	1001187087 (Ref No.)	
	1055	Prior To 0160074169	1001212227	•
		0160074169 - Present	1001211156	•
	1255	Prior To 0160074168	1001212225	•
		0160074168 - Present	1001211153	•
	1075	ALL	1001259238	•
	1644	ALL	1001233430	
1732	ALL	1001233431		•
SKYTRAK™4F	10042	0160069722 - 0160075987, incl 0160065791, 0160065796, 0160065825, 0160065826, 0160069336, 0160069359 & 0160069441	1001199512	•
		0160075988 - Present	1001211873	•
	10054	0160069722 - 0160075682, incl 0160065791, 0160065796, 0160065825, 0160065826, 0160069336, 0160069359, 0160069441 & 0160075696	1001199518	•
		0160075683 - Present, excl 0160075696	1001211875	•
12054	ALL	1001245474	•	

Non-Current Production - Pipe Grapple, JLG
Available Through JLG Aftermarket Parts

CARRIAGE SIZE			72 in.	
CAPACITY			3000 lbs.	
APPROX. WEIGHT			1701 lbs.	
PART NO.			1001142247	
MODEL	SN BREAKS	LOAD CHART BOOKLET		
JLG	G10-55A	0160037690 - Present, incl 0160038505, 0160038507, 0160038324, 0160038489 & 0160038493	1001115138	•
	G12-55A	0160037689 - Present	1001115540	•
	G15-44A	Prior To 0160074142	1001194130	•
		0160074142 - Present	1001211953	•

NOTES:

- Use only JLG approved attachments with proper material handler model/attachment load capacity charts displayed in the operator's cab.
- Never use your attachment as a work platform or personnel carrier.

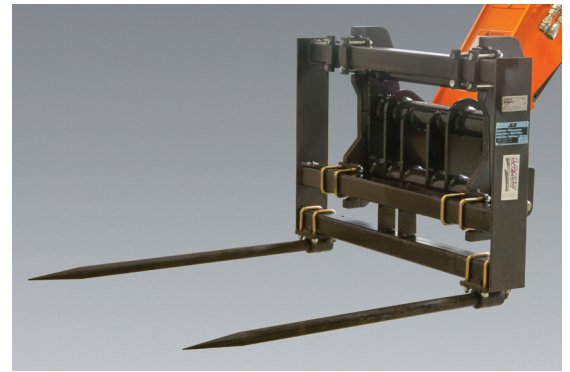
Can't find the attachment you are looking for? Contact your JLG Aftermarket Parts representative at 1-877-JLG-LIFT or visit www.jlg.com.

Round Fork Tines

The round fork tines allow for stability of the hay bale while maneuvering around objects.

Features

- Work range of 4 ft.



Non-Current Production - Round Fork Tines, JLG
Available Through JLG Aftermarket Parts

PART NO.				2340035
MODEL		SN BREAKS	LOAD CHART BOOKLET	
JLG	619A	ALL	Consult Factory	•
	723A	ALL	Consult Factory	•



NOTES:

- Use only JLG approved attachments with proper material handler model/attachment load capacity charts displayed in the operator's cab.
- Never use your attachment as a work platform or personnel carrier.

Can't find the attachment you are looking for? Contact your JLG Aftermarket Parts representative at 1-877-JLG-LIFT or visit www.jlg.com.

Sheet Material Adapters

The sheet material adapter is ideal for carrying large, flat materials such as drywall, steel plates or plywood, limiting damage during transport.

Features

- May be used with standard, side-tilt or swing carriage
- May be used with pallet or lumber forks
- Includes swing function: 45 degrees right or left
- 72 in. carriage required



Current Production - Sheet Material Adapters

Available Through JLG Aftermarket Or With New Machine Orders

PART NO.			10011002275*	
MODEL	SN BREAKS	LOAD CHART BOOKLET		
SKYTRAK™	6036	0160069720 - 0160075649, incl 0160065792, 0160065798, 0160065824, 0160069383, 0160069411, 0160075653 & 0160075722	1001199500	•
		0160075650 - Present, excl 0160075653 & 0160075722	1001211867	•
	6042	0160069720 - 0160075656, incl 0160065792, 0160065798, 0160065824, 0160069383 & 0160069411	1001199504	•
		0160075657 - Present	1001211869	•
	8042	0160069722 - 0160075670, incl 0160065791, 0160065796, 0160065825, 0160065826, 0160069336, 0160069359 & 0160069441	1001199508	•
		0160075671 - Present	1001211871	•
	10042	0160069722 - 0160075987, incl 0160065791, 0160065796, 0160065825, 0160065826, 0160069336, 0160069359 & 0160069441	1001199512	•
		0160075988 - Present	1001211873	•
	10054	0160069722 - 0160075682, incl 0160065791, 0160065796, 0160065825, 0160065826, 0160069336, 0160069359, 0160069441 & 0160075696	1001199518	•
		0160075683 - Present, excl 0160075696	1001211875	•
	12054	ALL	1001245474	•

*PN 10011002275 is just the adapter - no carriage included

Non-Current Production - Sheet Material Carriage and Adapters, JLG

Available Through JLG Aftermarket Parts

CARRIAGE SIZE		72 in.	72 in.	N/A
CARRIAGE TYPE		Swing	Standard	N/A
PART NO.		71293005	91405077	10011002275*
MODEL	SN BREAKS	LOAD CHART BOOKLET		
JLG*	G6-42A	Prior To 0160037722	1001105323	•
		0160037722 - 0160040659	1001106001	•
		0160040678 - Present	1001130793	•
G9-43A	Prior To 0160037671	1001105325	•	•
		0160037671 - 0160040674, excl 0160040468 & 0160040672	1001106002	•
		0160040675 - Present, incl 0160040468 & 0160040672	1001130663	•

*PN 10011002275 is just the adapter - no carriage included

Continues on next page

*Swing material handler carriage on JLG and Gradall models requires auxiliary hydraulics

NOTES:

- Use only JLG approved attachments with proper material handler model/attachment load capacity charts displayed in the operator's cab.
- Never use your attachment as a work platform or personnel carrier.

Can't find the attachment you are looking for? Contact your JLG Aftermarket Parts representative at 1-877-JLG-LIFT or visit www.jlg.com.

Non-Current Production - Sheet Material Carriage and Adapters, JLG
Available Through JLG Aftermarket Parts

Continued from previous page

CARRIAGE SIZE			72 in.	72 in.	N/A
CARRIAGE TYPE			Swing	Standard	N/A
PART NO.			71293005	91405077	10011002275*
MODEL	SN BREAKS	LOAD CHART BOOKLET			
G10-43A	0160037671 - 0160040674, excl 0160040468 & 0160040672	100113013	•		•
	0160040675 - Present, incl 0160040468 & 0160040672	1001130935	•		•
G10-55A	Prior To 0160037689	1001105707		•	
	0160037690 - 0160038486, incl 0160038505 & 0160038507, excl 0160038324, 0160038489 & 0160038493	1001106003	•		•
	0160038500 - Present, incl 0160038324, 0160038489 & 0160038493, excl 0160038505 & 0160038507	1001115135	•		•
G12-55A	Prior To 0160037689	1001105326		•	
	0160037689 - 0160038533	1001106004	•		•
	0160038538 & Present	1001115536	•		•
TF6-42	ALL	Consult Factory		•	

*PN 10011002275 is just the adapter - no carriage included

Non-Current Production - Sheet Material Carriage and Adapters, Gradall
Available Through JLG Aftermarket Parts

CARRIAGE SIZE			72 in.	72 in.	72 in.	N/A
CARRIAGE TYPE			Swing	Swing	Standard	N/A
PART NO.			90555013	91405078	91405077	10011002275*
MODEL	SN BREAKS	LOAD CHART BOOKLET				
534D-9	Prior To 0160037689	1001102719	•			
	0160037689 - Present	100112753				•
534D-10	Prior To 0160037689	1001102720	•			
	0160037689 - Present	100112753				•
544D	Prior To 0160037689	1001102721	•			
	0160037689 - Present	1001106008				•
G6-42P	Prior To 0160037689	1001105324		•	•	
	0160037689 - Present	1001106005				•



*Swing material handler carriage on JLG and Gradall models requires auxillary hydraulics

NOTES:

- Use only JLG approved attachments with proper material handler model/attachment load capacity charts displayed in the operator's cab.
- Never use your attachment as a work platform or personnel carrier.

Can't find the attachment you are looking for? Contact your JLG Aftermarket Parts representative at 1-877-JLG-LIFT or visit www.jlg.com.

Non-Current Production - Sheet Material Carriage and Adapters, SkyTrak
Available Through JLG Aftermarket Parts

CARRIAGE SIZE			N/A	72 in.	
CARRIAGE TYPE			N/A	Swing	
PART NO.			10011002275*	7129300S	
MODEL	SN BREAKS	LOAD CHART BOOKLET			
SKYTRAK	4266	ALL	Consult Factory	•	
	4270	ALL	Consult Factory	•	
	4290	ALL	Consult Factory	•	
	5028	ALL	Consult Factory	•	
	6036	Prior To 0160031200	Consult Factory		•
		0160031200 - 0160069719, excl 0160065792, 0160065798, 0160065824, 0160069383 & 0160069411	1001199500	•	
	6042	Prior To 0160031200	Consult Factory		•
		0160031200 - 0160069719, excl 0160065792, 0160065798, 0160065824, 0160069383 & 0160069411	1001199504	•	
	8042	Prior To 0160031235	Consult Factory		•
		0160031235 - 0160069721, excl 0160065791, 0160065796, 0160065825, 0160065826, 0160069336, 0160069359 & 0160069441	1001199508	•	
	10042	Prior To 0160031425	Consult Factory		•
		0160031425 - 0160069721, excl 0160065791, 0160065796, 0160065825, 0160065826, 0160069336, 0160069359 & 0160069441	1001199512	•	
10054	Prior To 0160031255	Consult Factory		•	
	0160031255 - 0160069721, excl 0160065791, 0160065796, 0160065825, 0160065826, 0160069336, 0160069359 & 0160069441	1001199518	•		

*PN 10011002275 is just the adapter - no carriage included

Non-Current Production - Sheet Material Carriage and Adapters, Lull
Available Through JLG Aftermarket Parts

CARRIAGE SIZE			72 in.	N/A	
CARRIAGE TYPE			Swing	N/A	
PART NO.			7129300S	10011002275*	
MODEL	SN BREAKS	LOAD CHART BOOKLET			
LULL	644E-42	Prior To 0160031500	7300628	•	
		0160037794 - Present, incl 0160045421	1001134329	•	
	944E-42	Prior To 0160031500	7301586	•	
		0160037794 - Present	1001106011		•
	1044C-54SII	0160037900 - Present	1001106009		•

*PN 10011002275 is just the adapter - no carriage included



NOTES:

- Use only JLG approved attachments with proper material handler model/attachment load capacity charts displayed in the operator's cab.
- Never use your attachment as a work platform or personnel carrier.

Can't find the attachment you are looking for? Contact your JLG Aftermarket Parts representative at 1-877-JLG-LIFT or visit www.jlg.com.

Sweeper

Our heavy duty sweeper is durable enough to perform under the most challenging conditions and is capable of handling all types of materials, including fine dirt, gravel, millings and other debris.

Features

- Increased bucket capacity by 22% with less carry over
- Increase efficiency by dumping less frequently with a larger capacity bucket
- A simple tool-less adjustment knob allows you to accommodate brush wear and still maintain increased bucket capacity.
- Ideal for heavy duty cleanup, millings and snow removal
- High dump feature activated by reversing flow
- Hopper positioned in front
- Powered from loader hydraulics
- Designed and manufactured to construction grade
- Quick Attach mounts
- Industrial quality motor
- Broom rotates clockwise for maneuverability
- Hopper opens for dumping



Specifications

- Max Capacity: 1717 lbs.
- Max. Weight: 1490 lbs
- Width (overall): 105 in
- Length (w/o quick coupler): 72.25 in
- Max. Hydraulic Pressure: 3500 PSI
- Distance to Center of Gravity: 32 in.
- Brush Diameter: 26 in.
- Flow Range: 15-50 GPM
- Brush Width: 7ft.
- Sweeping Width: 84 in.
- Hopper Capacity: .53 yd³

Current Production - Sweeper

Available Through JLG Aftermarket Or With New Machine Orders

CAPACITY		1717 lbs.		
APPROX. WEIGHT		1490 lbs.		
PART NO.		1001202904		
MODEL	SN BREAKS	LOAD CHART BOOKLET		
JLG	642, 943, 1043, 1055, 1255 ONLY	Software, Chart Library	1001187087 (Ref No.)	
	742	ALL	1001226012	
	943/ 1043	No Outriggers	1001212420	•
		With Outriggers	1001212419	•
	1055	Prior To 0160074169	1001212227	•
		0160074169 - Present	1001211156	•
	1255	Prior To 0160074168	1001212225	•
0160074168 - Present		1001211153	•	
1075	ALL	1001259238	•	
SKYTRAK T4F	6036	0160069720 - 0160075649, incl 0160065792, 0160065798, 0160065824, 0160069383, 0160069411, 0160075653 & 0160075722	1001199500	•
		0160075650 - Present, excl 0160075653 & 0160075722	1001211867	•
	6042	0160069720 - 0160075656, incl 0160065792, 0160065798, 0160065824, 0160069383 & 0160069411	1001199504	•
		0160075657 - Present	1001211869	•
	8042	0160069722 - 0160075670, incl 0160065791, 0160065796, 0160065825, 0160065826, 0160069336, 0160069359 & 0160069441	1001199508	•
		0160075671 - Present	1001211871	•
	10042	0160069722 - 0160075987, incl 0160065791, 0160065796, 0160065825, 0160065826, 0160069336, 0160069359 & 0160069441	1001199512	•
		0160075988 - Present	1001211873	•
	10054	0160069722 - 0160075682, incl 0160065791, 0160065796, 0160065825, 0160065826, 0160069336, 0160069359, 0160069441 & 0160075696	1001199518	•
		0160075683 - Present, excl 0160075696	1001211875	•
12054	ALL	1001245474	•	

Additional/Replacement Parts:

Dust cap that installs on female quick connect fitting is PN 8420055
 Replacement polyester/wire sweeper brush is PN 70011926

NOTES:

- Use only JLG approved attachments with proper material handler model/attachment load capacity charts displayed in the operator's cab.
- Never use your attachment as a work platform or personnel carrier.

Can't find the attachment you are looking for? Contact your JLG Aftermarket Parts representative at 1-877-JLG-LIFT or visit www.jlg.com.

ATTACHMENTS

Non-Current Production - Sweeper, JLG Available Through JLG Aftermarket Parts

CAPACITY			1717 lbs.	
APPROX. WEIGHT			1490 lbs.	
PART NO.			1001202904	
MODEL	SN BREAKS	LOAD CHART BOOKLET		
JLG	642	ALL	1001212421	•
	G6-42A	0160037722 - 0160040659	1001110401	•
		0160040678 - Present	1001130739	•
	G9-43A	0160037671 - 0160040674, excl 0160040468 & 0160040672	1001110402	•
		0160040675 - Present, incl 0160040468 & 0160040672	1001130708	•
	G10-43A	0160037671 - 0160040674, excl 0160040468 & 0160040672	1001115257	•
		0160040675 - Present, incl 0160040468 & 0160040672	1001130844	•
	G10-55A	0160037690 - Present, incl 0160038505, 0160038507, 0160038324, 0160038489 & 0160038493	1001115138	•
G12-55A	0160037689 - Present	1001115540	•	

Additional/Replacement Parts:

Dust cap that installs on female quick connect fitting is PN 8420055
Replacement polyester/wire sweeper brush is PN 70011926

NOTES:

- Use only JLG approved attachments with proper material handler model/attachment load capacity charts displayed in the operator's cab.
- Never use your attachment as a work platform or personnel carrier.

Can't find the attachment you are looking for? Contact your JLG Aftermarket Parts representative at 1-877-JLG-LIFT or visit www.jlg.com.

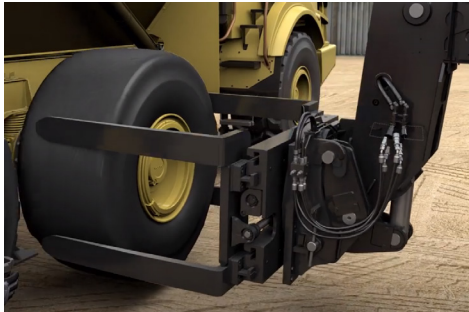
Tire Handler

New Tire Handler Available for JLG® Telehandlers

Create more versatility for your telehandler with the new tire handler attachment. This solution helps increase productivity by reducing or eliminating the manual labor involved with tire mounting, removal, and handling. Quickly and effectively replace and maneuver tires on your jobsite!

Features and Benefits:

- Rugged, lightweight construction
- Strong I-beam arm bars but without the weight
- Strong, rigid frame that resists flexing
- Nylon arm bearings are protected from damage
- Fast and economical part replacement
- Heavy duty rotator with 360° of continuous rotation
- Capacity of up to 7,000 lbs and range of 34 in. to 108 in.



Check out these features and benefits in action: https://www.youtube.com/watch?v=aOw3vBo1_rg

JLG MODEL	PART NUMBER
1644/1732	1001258523

NOTES:
· Use only JLG approved attachments with proper material handler model/attachment load capacity charts displayed in the operator's cab.
· Never use your attachment as a work platform or personnel carrier.
Can't find the attachment you are looking for? Contact your JLG Aftermarket Parts representative at 1-877-JLG-LIFT or visit www.jlg.com.

Trash Hopper

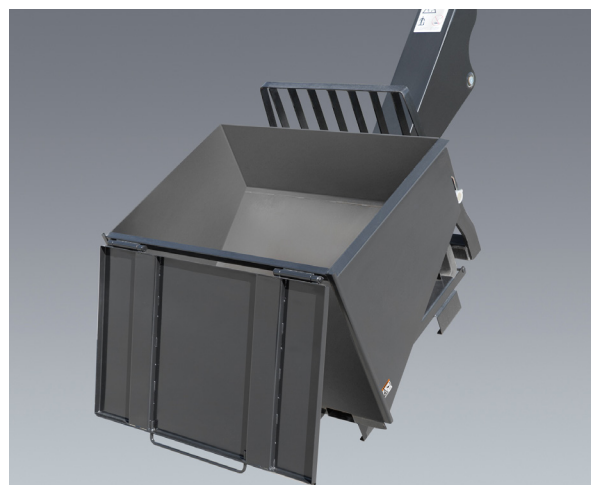
The Trash Hopper can increase job site efficiency by reducing the time and personnel required to move trash and other debris to and from elevated sites. Once the bar under the hopper is placed on the trash bin and pressure is applied, the hopper can be tilted forward and the door will open to allow trash to fall out. To latch the door again, simply tilt the hopper back. The exclusive JLG design of the bar mechanism does not allow the door to open when no pressure has been applied.

Features

- Saves time from moving trash to and from elevated sites
- Allows operator to remain safely in the cab with the hands-off bar design
- Increases productivity as operator can quickly empty the hopper without leaving the seat

Specifications

- Maximum Capacity:
 - 72"
 - 1.9 cubic yard capacity
 - 2000 lbs. maximum weight capacity
- Maximum Weight: 864 lbs.
- Distance to center of gravity: 32.5 in.



SEE IT IN ACTION!

Visit <https://goo.gl/FHyNbP> or on Online Express, click on Attachments/Trash Hopper and look for the link.

Note: The fork pockets on this attachment will not allow use of forks larger than 5.5" wide and 60" long.

Current Production - Trash Hopper
Available Through JLG Aftermarket Or With New Machine Orders

CAPACITY			2000 lbs.	
APPROX. WEIGHT			864 lbs.	
PART NO.			1001238566	
MODEL	SN BREAKS	LOAD CHART BOOKLET		
JLG	642, 943, 1043, 1055, 1255 ONLY	Software, Chart Library	1001187087 (Ref No.)	
	G5-18A	w/ JLG Coupler	1001102000	•
		w/ Universal Skid Steer Coupler	1001126677	•
	742	ALL	1001226012	•
	943	ALL	1001212420	•
	1043	ALL	1001212419	•
	1055	Prior To 0160074169	1001212227	•
		0160074169 - Present	1001211156	•
	1075		1001259238	•
	1255	Prior To 0160074168	1001212225	•
0160074168 - Present		1001211153	•	
1644	All	1001233430	•	
1732	All	1001233431	•	
SKYTRAK T4F	6036	0160069720 - 0160075649, incl 0160065792, 0160065798, 0160065824, 0160069383, 0160069411, 0160075653 & 0160075722	1001199500	•
		0160075650 - Present, excl 0160075653 & 0160075722	1001211867	•
	6042	0160069720 - 0160075656, incl 0160065792, 0160065798, 0160065824, 0160069383 & 0160069411	1001199504	•
		0160075657 - Present	1001211869	•
	8042	0160069722 - 0160075670, incl 0160065791, 0160065796, 0160065825, 0160065826, 0160069336, 0160069359 & 0160069441	1001199508	•
		0160075671 - Present	1001211871	•
	10042	0160069722 - 0160075987, incl 0160065791, 0160065796, 0160065825, 0160065826, 0160069336, 0160069359 & 0160069441	1001199512	•
		0160075988 - Present	1001211873	•
	10054	0160069722 - 0160075682, incl 0160065791, 0160065796, 0160065825, 0160065826, 0160069336, 0160069359, 0160069441 & 0160075696	1001199518	•
		0160075683 - Present, excl 0160075696	1001211875	•
12054	ALL	1001245474	•	

NOTES:

- Use only JLG approved attachments with proper material handler model/attachment load capacity charts displayed in the operator's cab.
- Never use your attachment as a work platform or personnel carrier.

Can't find the attachment you are looking for? Contact your JLG Aftermarket Parts representative at 1-877-JLG-LIFT or visit www.jlg.com.

Non-Current Production - Trash Hoppe, JLG
Available Through JLG Aftermarket Parts

CAPACITY			2000 lbs.	
APPROX. WEIGHT			864 lbs.	
PART NO.			1001238566	
MODEL	SN BREAKS	LOAD CHART BOOKLET		
JLG	642	ALL	1001212421	•
	G6-42A	0160037722 - 0160040659	100110401	•
		0160040678 - Present	1001130739	•
	G9-43A	0160037671 - 0160040674, excl 0160040468 & 0160040672	100110402	•
		0160040675 - Present, incl 0160040468 & 0160040672	1001130708	•
	G10-43A	0160037671 - 0160040674, excl 0160040468 & 0160040672	1001115257	•
		0160040675 - Present, incl 0160040468 & 0160040672	1001130844	•
	G10-55A	0160037690 - Present, incl 0160038505, 0160038507, 0160038324, 0160038489 & 0160038493	1001115138	•
G12-55A	0160037689 - Present	1001115540	•	



NOTES:

- Use only JLG approved attachments with proper material handler model/attachment load capacity charts displayed in the operator's cab.
- Never use your attachment as a work platform or personnel carrier.

Can't find the attachment you are looking for? Contact your JLG Aftermarket Parts representative at 1-877-JLG-LIFT or visit www.jlg.com.

Truss Boom

When lifting and lowering roof trusses, framing walls or steel beams into place, use the truss boom; available with or without a winch.

Features

- Truss boom with winch feature requires auxiliary hydraulics



Current Production - Truss Boom

Available Through JLG Aftermarket Or With New Machine Orders

LENGTH			3 ft.	12 ft.	12 ft.	15 ft.	Adjustable
WINCH			Yes	No	Yes	No	NO
CAPACITY			4000 lbs.	2000 lbs.	2000 lbs.	2000 lbs.	16,755 lbs.
PART NO.			1001100967	1001275853	1001099351	1001275852	1001192723
MODEL	SN BREAKS	LOAD CHART BOOKLET					
JLG	642, 943, 1043, 1055, 1255 ONLY	Software, Chart Library	1001187087 (Ref No.)				
	742	ALL	1001226012
	943/1043	Without Outriggers	1001212420
		Without Outriggers	1001212419
	1055	Prior To 0160074169	1001212227
		0160074169 - Present	1001211156
	1255	Prior To 0160074168	1001212225
		0160074168 - Present	1001211153
	1075	ALL	1001259238
1644	ALL	1001233430				.	
1732	ALL	1001233431				.	
SKYTRAK T4F	6036	0160069720 - 0160075649, incl 0160065792, 0160065798, 0160065824, 0160069383, 0160069411, 0160075653 & 0160075722	1001199500
		0160075650 - Present, excl 0160075653 & 0160075722	1001211867
	6042	0160069720 - 0160075656, incl 0160065792, 0160065798, 0160065824, 0160069383 & 0160069411	1001199504
		0160075657 - Present	1001211869
	8042	0160069722 - 0160075670, incl 0160065791, 0160065796, 0160065825, 0160065826, 0160069336, 0160069359 & 0160069441	1001199508
		0160075671 - Present	1001211871
	10042	0160069722 - 0160075987, incl 0160065791, 0160065796, 0160065825, 0160065826, 0160069336, 0160069359 & 0160069441	1001199512
		0160075988 - Present	1001211873
	10054	0160069722 - 0160075682, incl 0160065791, 0160065796, 0160065825, 0160065826, 0160069336, 0160069359, 0160069441 & 0160075696	1001199518
		0160075683 - Present, excl 0160075696	1001211875
12054	ALL	1001245474	

NOTES:

· Use only JLG approved attachments with proper material handler model/attachment load capacity charts displayed in the operator's cab.

· Never use your attachment as a work platform or personnel carrier.

Can't find the attachment you are looking for? Contact your JLG Aftermarket Parts representative at 1-877-JLG-LIFT or visit www.jlg.com.

ATTACHMENTS

Non-Current Production - Truss Boom, JLG Available Through JLG Aftermarket Parts

LENGTH			3 ft.	10ft	12 ft.	12 ft.	15 ft.
WINCH			Yes	No	No	Yes	No
CAPACITY			4000 lbs.	2000 lbs.	2000 lbs.	2000 lbs.	2000 lbs.
PART NO.			1001100967	91405083	1001275853	1001099351	1001275852
MODEL	SN BREAKS	LOAD CHART BOOKLET					
JLG	642	ALL	1001212421
	619A	ALL	Consult Factory				
	723A	ALL	Consult Factory		.	.	.
	G5-19A	ALL	Consult Factory				
	G6-23A	ALL	Consult Factory				
	G6-42A	0160037722 - 0160040659	1001110401
		0160040678 - Present	1001130739
	G9-43A	0160037671 - 0160040674, excl 0160040468 & 0160040672	1001110402
		0160040675 - Present, incl 0160040468 & 0160040672	1001130708
	G10-43A	0160037671 - 0160040674, excl 0160040468 & 0160040672	1001115257
		0160040675 - Present, incl 0160040468 & 0160040672	1001130844
	G10-55A	0160037690 - Present, incl 0160038505, 0160038507, 0160038324, 0160038489 & 0160038493	1001115138		.	.	.
		Prior to 060037689	1001105326		.		
	G12-55A	0160037689 - Present	1001115540			.	
		Prior To 0160074142	1001194130		.	.	.
G15-44A	0160074142 - Present	1001211953		.	.	.	
	TF6-42	ALL	Consult factory		.		

Non-Current Production - Truss Boom, Gradall Available Through JLG Aftermarket Parts

LENGTH			10 ft.	12 ft.	12 ft.	15 ft.
WINCH			No	No	Yes	No
CAPACITY			2000 lbs.	2000 lbs.	2000 lbs.	2000 lbs.
PART NO.			90455011	1001275853	1001099351	1001275852
MODEL	SN BREAKS	LOAD CHART BOOKLET				
GRADALL	522D/524D	ALL	Consult Factory	.		
	534C-10	ALL	Consult Factory	.		
	534D-6	ALL	Consult Factory	.		
	534D-9	Prior To 0160037689	1001102720	.		
		0160037689 - Present	1001110406		.	.
	534D-10	Prior To 0160037689	1001102721	.		
		0160037689 - Present	1001110407		.	.
	544C	ALL	Consult Factory	.		
	544D	Prior To 0160037689	1001102721	.		
		0160037689 - Present	1001110408		.	.
G6-42P	0160037689 - Present	1001110405		.	.	

NOTES:

- Use only JLG approved attachments with proper material handler model/attachment load capacity charts displayed in the operator's cab.
- Never use your attachment as a work platform or personnel carrier.

Can't find the attachment you are looking for? Contact your JLG Aftermarket Parts representative at 1-877-JLG-LIFT or visit www.jlg.com.

Non-Current Production - Truss Boom, SkyTrak
Available Through JLG Aftermarket Parts

LENGTH			3 ft.	12 ft.	12 ft.	15 ft.	15 ft.	
WINCH			Yes	No	Yes	No	No	
CAPACITY			4000 lbs.	2000 lbs.	2000 lbs.	2000 lbs.	2000 lbs.	
PART NO.			7139608S	1001275853	1001099351	7119800	1001275852	
MODEL	SN BREAKS	LOAD CHART BOOKLET						
SKYTRAK	4266	ALL	Consult Factory	.				
	4270	ALL	Consult Factory	.				
	4290	ALL	Consult Factory	.				
	5028	ALL	Consult Factory	.				
	6036	Prior To 0160031200	Consult Factory	.				
		0160031200 - 016009719, excl 0160065792, 0160065798, 0160065824, 0160069383 & 0160069411	1001199500		.	.		.
	6042	Prior To 0160031200	Consult Factory	.				
		0160031200 - 016009719, excl 0160065792, 0160065798, 0160065824, 0160069383 & 0160069411	1001199504		.	.		.
	8042	Prior To 0160031235	Consult Factory	.				
		0160031235 - 0160069721, excl 0160065791, 0160065796, 0160065825, 0160065826, 0160069336, 0160069359 & 0160069441	1001199508		.	.		.
10042	Prior To 0160031425	Consult Factory	.			.		
	0160031425 - 0160069721, excl 0160065791, 0160065796, 0160065825, 0160065826, 0160069336, 0160069359 & 0160069441	1001199512		.	.		.	
10054	Prior To 0160031255	Consult Factory	.			.		
	0160031255 - 0160069721, excl 0160065791, 0160065796, 0160065825, 0160065826, 0160069336, 0160069359 & 0160069441	1001199518		.	.		.	

Non-Current Production - Truss Boom, Lull
Available Through JLG Aftermarket Parts

LENGTH			3 ft.	10 ft.	10 ft.	10 ft.	12 ft.	12 ft.	15 ft.
WINCH			Yes	No	No	Yes	No	Yes	No
CAPACITY			4000 lbs.	2000 lbs.	2000 lbs.	2000 lbs.	2000 lbs.	2000 lbs.	2000 lbs.
PART NO.			7139608S	7301178S	10338932	7301179	1001099902S	1001099351	1001099901S
MODEL	SN BREAKS	LOAD CHART BOOKLET							
LULL	644B-37	ALL	Consult Factory		.				
	644B-42	ALL	Consult Factory		.				
	644D-34	ALL	Consult Factory		.				
	644E-42	Prior To 0160031500	7300628	.	.		.		
		0160037900 - Present	1001110410				.	.	.
	844C-42	ALL	Consult Factory		.				
	944E-42	Prior To 0160031500	7301586	.	.		.		
		0160037794 - Present, incl 0160045421	1001110411				.	.	.
	1044C-54 SII	Prior To 0160037893	1001105327			.			
		0160037794 - Present	1001110409				.	.	.
	6K-37	ALL	Consult Factory		.				
	6K-42	ALL	Consult Factory		.				
	8K-42	ALL	Consult Factory		.				
	10K-42/10K-54	ALL	Consult Factory		.				

NOTES:

- Use only JLG approved attachments with proper material handler model/attachment load capacity charts displayed in the operator's cab.
- Never use your attachment as a work platform or personnel carrier.

Can't find the attachment you are looking for? Contact your JLG Aftermarket Parts representative at 1-877-JLG-LIFT or visit www.jlg.com.

Quick Coupling Assembly

The quick coupling assembly is a skid steer coupling that replaces the standard JLG style coupler.

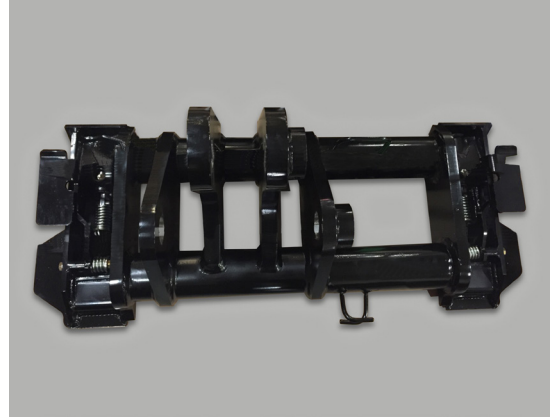
Features

- Heavy duty
- Optimizes machine versatility
- Expands attachment options

Current Production - Quick Coupling Assembly

Available Through JLG Aftermarket Parts

PART NO.		1001117498
MODEL	SN BREAKS	
JLG GS-18A	ALL	.



NOTE: When coupling is installed, JLG coupling style attachments cannot be utilized.

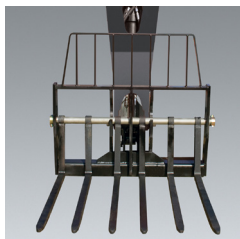
Forks

There are three main fork types available: the pallet fork, the cubing fork and the lumber fork.



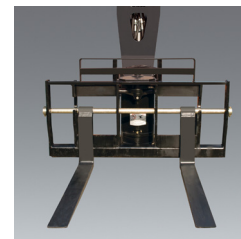
Pallet Forks

- handle palletized material and other loads that require transportation and placement



Cubing Forks

- smaller width
- used to load, unload and place cubes of brick and block



Lumber Forks

- wider width
- ideal for separating stacks of lumber

Current Production - Pallet Forks

Available Through JLG Aftermarket Or With New Machine Orders

TYPE		Pallet							
CAPACITY PER FORKAT 24 IN. LOAD CENTER		3,800 lbs.	5475 lbs.	5650 lbs.	6850 lbs.	9,050 lbs.	9,050 lbs.	9,050 lbs.	9,050 lbs.
FORK DIMENSIONS		2" X 4" X 48"	2.25"x4"x48"	2.25"x6"x72"	2.25"x5"x48"	2.25" X 6" X 96"	2.25" X 6" X 72"	2.25" X 6" X 60"	2.25" X 6" X 48"
EYE DIAMETER		2.25 in.	2.25 in.	2.25 in.	2.25 in.	2.75 in.	2.75 in.	2.75 in.	2.75 in.
FORK DROP		24 in.	24 in.	24 in.	24 in.	24 in.	24 in.	24 in.	24 in.
PART NO.		1001099458	2340045	1001259206	2340038	1001196949	1001196950	1001196951	1001196952
Model		SN Break							
JLG	742	ALL	.	.	.				
	943	ALL	.	.	.				
	1043	ALL	.	.	.				
	1055	ALL	.	.	.				
	1255	ALL	.	.	.				
	1075	ALL	.	.	.				
	1644	ALL			
	1732	ALL			
	G5-18A	ALL	.						
SKYTRAK™	6036	0160069720 - Present, incl 0160065792, 0160065798, 0160065824, 0160069383 & 0160069411	.	.	.				
	6042	0160069720 - Present, incl 0160065792, 0160065798, 0160065824, 0160069383 & 0160069411	.	.	.				
	8042	0160069722 - Present, incl 0160065791, 0160065796, 0160065825, 0160065826, 0160069336, 0160069359 & 0160069441	.	.	.				
	10042	0160069722 - Present, incl 0160065791, 0160065796, 0160065825, 0160065826, 0160069336, 0160069359 & 0160069441	.	.	.				
	10054	0160069722 - Present, incl 0160065791, 0160065796, 0160065825, 0160065826, 0160069336, 0160069359 & 0160069441	.	.	.				
	12054	ALL	.	.	.				

CURRENT & NON-CURRENT FORKS | JLG/SKYTRAK

Current Production - Cubing and Lumbar Forks

Available Through JLG Aftermarket Or With New Machine Orders

TYPE		Cubing	Lumber			
CAPACITY PER FORKAT 24 IN. LOAD CENTER		1940 lbs.	3650 lbs.	5400 lbs.	6850 lbs.	8150 lbs.
FORK DIMENSIONS		2"x2"x48"	1.5"x6"x60"	1.75"x7"x60"	2"x7"x60"	2.25"x6"x60"
EYE DIAMETER		2.25 in.	2.25 in.	2.25 in.	2.25 in.	2.25 in.
FORK DROP		24 in.	24 in.	24 in.	24 in.	24 in.
PART NO.		2340037	1001099457	2340046	1001097110	2340039
Model	SN Break					
JLG	742	ALL	•	•	•	•
	943	ALL	•	•	•	•
	1043	ALL	•	•	•	•
	1055	ALL	•	•	•	•
	1255	ALL	•	•	•	•
	1075	ALL	•	•	•	•
	1644	ALL				
	1732	ALL				
	G5-18A	ALL	•	•		
SKYTRAK™/TF	6036	0160069720 - Present, incl 0160065792, 0160065798, 0160065824, 0160069383 & 0160069411	•	•	•	•
	6042	0160069720 - Present, incl 0160065792, 0160065798, 0160065824, 0160069383 & 0160069411	•	•	•	•
	8042	0160069722 - Present, incl 0160065791, 0160065796, 0160065825, 0160065826, 0160069336, 0160069359 & 0160069441	•	•	•	•
	10042	0160069722 - Present, incl 0160065791, 0160065796, 0160065825, 0160065826, 0160069336, 0160069359 & 0160069441	•	•	•	•
	10054	0160069722 - Present, incl 0160065791, 0160065796, 0160065825, 0160065826, 0160069336, 0160069359 & 0160069441	•	•	•	•
	12054	ALL	•	•	•	•

Non-Current Production - Pallet Forks, JLG

Available Through JLG Aftermarket Parts

TYPE		Pallet						
CAPACITY PER FORK AT 24 IN. LOAD CENTER		3800 lbs.	4409 lbs. (rated at 20" load center)	4409 lbs. (rated at 20" load center)	5475 lbs.	5475 lbs.	5650 lbs.	5650 lbs.
FORK DIMENSIONS		2"x4"x48"	1.75"x5"x48"	2"x4"x48"	2.25"x4"x48"	2.25"x4"x48"	2"x6"x60"	2.25"x6"x72"
EYE DIAMETER		2.25 in.	2.375 in.	2.375 in.	2.25 in.	2.25 in.	2.25 in.	2.25 in.
FORK DROP		24 in.	28 in.	28 in.	20 in.	24 in.	25.5 in.	24 in.
PART NO.		1001099458	2340029	2340030	91513206	2340045	91403580	1001259206
Model	SN Break							
JLG	642	ALL				•		•
	619A	ALL	•					
	723A	ALL	•					•
	G5-19A	ALL		•	•			
	G6-23A	ALL		•	•			
	G6-42A	Prior To 0160037722				•	•	•
	G6-42A	0160037722 - Present					•	•
	G9-43A	Prior To 0160037671	•			•	•	•
	G9-43A	0160037671 - Present					•	•
	G10-43A	ALL					•	•
	G10-55A	Prior To 0160037689				•	•	•
	G10-55A	0160037689 - Present					•	•
	G12-55A	Prior To 0160037689				•	•	•
	G12-55A	0160037689 - Present					•	•
	TF6-42	ALL				•	•	•

NOTES:

- Use only JLG approved attachments with proper material handler model/attachment load capacity charts displayed in the operator's cab.
- Forks rated less than the attachment and/or machine capacity decrease the capacity of the attachment and machine to that of the forks.
- Forks rated more than the attachment and/or machine capacity do not increase the attachment or machine capacity.
- Never use your attachment as a work platform or personnel carrier.

Can't find the attachment you are looking for? Contact your JLG Aftermarket Parts representative at 1-877-JLG-LIFT or visit www.jlg.com.

Pallet options continue on next page

Non-Current Production - Pallet Forks, JLG

Available Through JLG Aftermarket Parts

TYPE			Pallet				Pallet (Sold as Set)		Pallet (Fork Positioning Carriage Only)
CAPACITY PER FORK AT 24 IN. LOAD CENTER			6850 lbs.	6850 lbs.	7500 lbs.	8150 lbs.	4409 lbs. (rated at 20" load center)	4409 lbs. (rated at 20" load center)	5000 lbs.
FORK DIMENSIONS			2.25"x5"x48"	2.25"x5"x48"	2.36"x6"x48"	2.25"x6"x60"	2"x4"x48"	2"x5"x48"	2.25"x4"x48"
EYE DIAMETER			2.25 in.	2.25 in.	2.31 in.	2.25 in.	2.375 in.	2.375 in.	2 in.
FORK DROP			20 in.	24 in.	24 in.	20 in.	21.5 in.	21.5 in.	24 in.
PART NO.			91563141	2340038	1001193801	91563142	1001100911	1001117945	7301408
	Model	SN Break							
JLG	642	ALL		.					
	723A	ALL		.					
	G5-19A	ALL					.	.	
	G6-23A	ALL					.	.	
	G6-42A	Prior To 0160037722		.	.		.		
	G6-42A	0160037722 - Present		.					.
	G9-43A	Prior To 0160037671		.	.		.		
	G9-43A	0160037671 - Present		.					.
	G10-43A	ALL		.					.
	G10-55A	Prior To 0160037689		.	.		.		
	G10-55A	0160037689 - Present		.					.
	G12-55A	Prior To 0160037689		.	.		.		
	G12-55A	0160037689 - Present		.	.				.
	G15-44A	ALL			.				
	TF6-42	ALL		.	.		.		

Non-Current Production - Cubing and Drywall Forks, JLG

Available Through JLG Aftermarket Parts

TYPE			Cubing		Cubing (Sold as Set)	Drywall
CAPACITY PER FORK AT 24 IN. LOAD CENTER			1940 lbs.	1940 lbs.	1940 lbs.	2500 lbs.
FORK DIMENSIONS			2"x2"x48"	2"x2"x48"	2"x2"x48"	1.75"x4"x48"
EYE DIAMETER			2.25 in.	2.25 in.	2.375"	2.25 in.
FORK DROP			20 in.	24 in.	21.5 in.	29 in.
PART NO.			91403359	2340037	10010979225	91403366
	Model	SN Break				
JLG	642	ALL		.		
	619A	ALL		.		
	723A	ALL		.		
	G5-19A	ALL				.
	G6-23A	ALL				.
	G6-42A	Prior To 0160037722		.	.	
	G6-42A	0160037722 - Present		.		
	G9-43A	Prior To 0160037671		.	.	
	G9-43A	0160037671 - Present		.		
	G10-43A	ALL		.		
	G10-55A	Prior To 0160037689		.	.	
	G10-55A	0160037689 - Present		.		.
	G12-55A	Prior To 0160037689		.	.	
	G12-55A	0160037689 - Present		.	.	
	TF6-42	ALL		.	.	

NOTES:

- Use only JLG approved attachments with proper material handler model/attachment load capacity charts displayed in the operator's cab.
 - Forks rated less than the attachment and/or machine capacity decrease the capacity of the attachment and machine to that of the forks.
 - Forks rated more than the attachment and/or machine capacity do not increase the attachment or machine capacity.
 - Never use your attachment as a work platform or personnel carrier.
- Can't find the attachment you are looking for? Contact your JLG Aftermarket Parts representative at 1-877-JLG-LIFT or visit www.jlg.com.

Non-Current Production - Lumber Forks, JLG Available Through JLG Aftermarket Parts

TYPE		Lumber						Dual Taper
CAPACITY PER FORK AT 24 IN. LOAD CENTER		3050 lbs.	3650 lbs.	5400 lbs.	6850 lbs.	8150 lbs.	8150 lbs.	7500 lbs.
FORK DIMENSIONS		1.75"x4"x48"	1.5"x6"x60"	1.75"x7"x60"	2"x7"x60"	2.25"x6"x60"	2.25"x6"x72"	2.36"x6"x72"
EYE DIAMETER		2.25 in.	2.2 in.	2.25 in.	2.25 in.	2.25 in.	2.25 in.	2.31 in.
FORK DROP		25.5 in.	24 in.	24 in.	24 in.	24 in.	20 in.	24 in.
PART NO.		91403364	1001099457	2340046	1001097110	2340039	91563143	1001193802
Model	SN Break							
JLG	642	ALL	•		•	•		
	619A	ALL	•					
	723A	ALL	•					
	G6-42A	Prior To 0160037722	•	•		•	•	
	G6-42A	0160037722 - Present		•		•		
	G9-43A	Prior To 0160037671	•	•		•	•	
	G9-43A	0160037671 - Present		•		•		
	G10-43A	ALL		•		•		
	G10-55A	Prior To 0160037689	•	•		•	•	
	G10-55A	0160037689 - Present		•		•		
	G12-55A	Prior To 0160037689	•	•		•	•	
	G12-55A	0160037689 - Present		•		•		
	G15-44A	ALL					•	•
	TF6-42	ALL	•		•		•	



NOTES:

- Use only JLG approved attachments with proper material handler model/attachment load capacity charts displayed in the operator's cab.
- Forks rated less than the attachment and/or machine capacity decrease the capacity of the attachment and machine to that of the forks.
- Forks rated more than the attachment and/or machine capacity do not increase the attachment or machine capacity.
- Never use your attachment as a work platform or personnel carrier.

Can't find the attachment you are looking for? Contact your JLG Aftermarket Parts representative at 1-877-JLG-LIFT or visit www.jlg.com.

Non-Current Production - Pallet Forks, Gradall

Available Through JLG Aftermarket Parts

TYPE		Pallet								
CAPACITY PER FORK AT 24 IN. LOAD CENTER		3750 lbs. (rated at 48" load center)	4000 lbs.	4500 lbs.	5000 lbs.	5000 lbs.	5000 lbs.	5475 lbs.	5475 lbs.	
FORK DIMENSIONS		2"x6"x96"	2"x4"x48"	1.75"x6"x48"	2"x6"x48"	2"x6"x60"	2"x6"x72"	2.25"x4"x48"	2.25"x4"x48"	
EYE DIAMETER		2 in.	2 in.	2 in.	2 in.	2 in.	2 in.	2 in.	2.25 in.	
FORK DROP		20 in.	20 in.	20 in.	20 in.	20 in.	20 in.	20.5 in.	20 in.	
PART NO.		H0453002	90453002	90601819	90553005	90601015	90553018	90453048	91513206	
Model	SN Break									
GRADALL	522D/524D	ALL	
	534C-9	ALL	
	534C-10	ALL	
	534D-6	ALL	
	534D-9	Prior To 0160037689
		0160037689 - Present								
	534D-10	Prior To 0160037689
		0160037689 - Present								
	544C	ALL	
	544D	Prior To 0160037689
		0160037689 - Present								
	G6-42P	Prior To 0160037689								.
0160037689 - Present										

Non-Current Production - Pallet Forks, Gradall

Available Through JLG Aftermarket Parts

TYPE		Pallet					Pallet (Swing Mast Carriage Only)			
CAPACITY PER FORK AT 24 IN. LOAD CENTER		5475 lbs.	5650 lbs.	5650 lbs.	6850 lbs.	6850 lbs.	8150 lbs.	2500 lbs.	5650 lbs.	
FORK DIMENSIONS		2.25"x4"x48"	2"x6"x60"	2.25"x6"x72"	2.25"x5"x48"	2.25"x5"x48"	2.25"x6"x60"	1.75"x4"x48"	2"x6"x60"	
EYE DIAMETER		2.25 in.	2.25 in.	2.25 in.	2.25 in.	2.25 in.	2.25 in.	2 in.	2 in.	
FORK DROP		24 in.	25.5 in.	24 in.	20 in.	24 in.	20 in.	25.5 in.	25.5 in.	
PART NO.		2340045	91403580	1001259206	91563141	2340038	91563142	90553008	90453045	
Model	SN Break									
GRADALL	522D/524D	ALL								
	534C-9	ALL						.	.	
	534C-10	ALL						.	.	
	534D-6	ALL						.	.	
	534D-9	Prior To 0160037689
		0160037689 - Present
	534D-10	Prior To 0160037689
		0160037689 - Present
	544C	ALL						.	.	
	544D	Prior To 0160037689
		0160037689 - Present
	G6-42P	Prior To 0160037689
0160037689 - Present		

NOTES:

- Use only JLG approved attachments with proper material handler model/attachment load capacity charts displayed in the operator's cab.
- Forks rated less than the attachment and/or machine capacity decrease the capacity of the attachment and machine to that of the forks.
- Forks rated more than the attachment and/or machine capacity do not increase the attachment or machine capacity.
- Never use your attachment as a work platform or personnel carrier.

Can't find the attachment you are looking for? Contact your JLG Aftermarket Parts representative at 1-877-JLG-LIFT or visit www.jlg.com.

NON-CURRENT FORKS | GRADALL

Non-Current Production - Cubing and Drywall Forks, Gradall Available Through JLG Aftermarket Parts

TYPE		Cubing				
CAPACITY PER FORK AT 24 IN. LOAD CENTER		1500 lbs.	1940 lbs.	1940 lbs.	2500 lbs.	
FORK DIMENSIONS		2"x2"x48"	2"x2"x48"	2"x2"x48"	1.75"x4"x48"	
EYE DIAMETER		2 in.	2.25 in.	2.25 in.	2.25 in.	
FORK DROP		20 in.	20 in.	24 in.	29 in.	
PART NO.		90600390	91403359	2340037	91403366	
Model	SN Break					
GRADALL	522D/524D	ALL	.			
	534C-9	ALL	.			
	534C-10	ALL	.			
	534D-6	ALL	.			
	534D-9	Prior To 0160037689	.		.	
		0160037689 - Present			.	
	534D-10	Prior To 0160037689	.		.	
		0160037689 - Present			.	
	544C	ALL	.			
	544D	Prior To 0160037689	.		.	
		0160037689 - Present			.	
	G6-42P	Prior To 0160037689		.	.	.
0160037689 - Present				.		

Non-Current Production - Lumber Forks, Gradall Available Through JLG Aftermarket Parts

TYPE		Lumber					
CAPACITY PER FORK AT 24 IN. LOAD CENTER		3050 lbs.	5000 lbs.	5400 lbs.	5650 lbs.	8150 lbs.	8150 lbs.
FORK DIMENSIONS		1.75"x4"x48"	2"x6"x72"	1.75"x7"x60"	2"x6"x60"	2.25"x6"x60"	2.25"x6"x72"
EYE DIAMETER		2.25 in.	2 in.	2.25 in.	2 in.	2.25 in.	2.25 in.
FORK DROP		25.5 in.	20 in.	24 in.	20 in.	24 in.	20 in.
PART NO.		91403364	91123132	2340046	91163269	2340039	91563143
Model	SN Break						
GRADALL	522D/524D	ALL	.		.		
	534C-9	ALL	.		.		
	534C-10	ALL	.		.		
	534D-6	ALL	.		.		
	534D-9	Prior To 0160037689	
		0160037689 - Present		.	.	.	
	534D-10	Prior To 0160037689	
		0160037689 - Present		.	.	.	
	544C	ALL	.		.		
	544D	Prior To 0160037689	
		0160037689 - Present		.	.	.	
	G6-42P	Prior To 0160037689
0160037689 - Present			.	.	.		

NOTES:

- Use only JLG approved attachments with proper material handler model/attachment load capacity charts displayed in the operator's cab.
- Forks rated less than the attachment and/or machine capacity decrease the capacity of the attachment and machine to that of the forks.
- Forks rated more than the attachment and/or machine capacity do not increase the attachment or machine capacity.
- Never use your attachment as a work platform or personnel carrier.

Can't find the attachment you are looking for? Contact your JLG Aftermarket Parts representative at 1-877-JLG-LIFT or visit www.jlg.com.

Non-Current Production - Pallet Forks, SkyTrak Available Through JLG Aftermarket Parts

TYPE		Pallet							
CAPACITY PER FORK AT 24 IN. LOAD CENTER		3000 lbs.	4000 lbs.	5000 lbs.	5060 lbs.	5475 lbs.	5600 lbs.	6850 lbs.	
FORK DIMENSIONS		1.75"x4"x48"	2"x4"x48"	2"x4"x48"	2"x5"x72"	2.25"x4"x48"	2.25"x6"x72"	2.25"x5"x48"	
EYE DIAMETER		2 in.	2 in.	2 in.	2 in.	2.25 in.	2.25 in.	2.25 in.	
FORK DROP		22 in.	24 in.	24 in.	24 in.	24 in.	24 in.	24 in.	
PART NO.		7048233	7097523	7301408	2340042	2340045	1001259206	2340038	
Model	SN Break								
SKYTRAK	4266	ALL	.						
	4270	ALL	.						
	4290	ALL		.					
	6036	Prior To 0160031200
		0160031200 - 016009719, excl 0160065792, 0160065798, 0160065824, 0160069383 & 0160069411	
	6042	Prior To 0160031200	
		0160031200 - 016009719, excl 0160065792, 0160065798, 0160065824, 0160069383 & 0160069411	
	8042	Prior To 0160031235	
		0160031235 - 0160069721, excl 0160065791, 0160065796, 0160065825, 0160065826, 0160069336, 0160069359 & 0160069441	
	10042	Prior To 0160031425	
0160031425 - 0160069721, excl 0160065791, 0160065796, 0160065825, 0160065826, 0160069336, 0160069359 & 0160069441			
10054	Prior To 0160031255		
	0160031255 - 0160069721, excl 0160065791, 0160065796, 0160065825, 0160065826, 0160069336, 0160069359 & 0160069441		

Non-Current Production - Cubing, Drywall and Lumber Forks, SkyTrak Available Through JLG Aftermarket Parts

TYPE		Cubing		Lumber					
CAPACITY PER FORK AT 24 IN. LOAD CENTER		1940 lbs.	2000 lbs.	3000 lbs.	5400 lbs.	5650 lbs.	6000 lbs.	8150 lbs.	
FORK DIMENSIONS		2"x2"x48"	2"x2"x48"	1.75"x5"x60"	1.75"x7"x60"	2"x6"x60"	1.75"x7"x60"	2.25"x6"x60"	
EYE DIAMETER		2.25 in.	2 in.	2 in.	2.25 in.	2 in.	2 in.	2.25 in.	
FORK DROP		24 in.	22 in.	24 in.	24 in.	24 in.	24 in.	24 in.	
PART NO.		2340037	7139747	7092793	2340046	2340036	7139746	2340039	
Model	SN Break								
SKYTRAK	4266	ALL	.				.		
	4270	ALL	.				.		
	4290	ALL		.			.		
	6036	Prior To 0160031200
		0160031200 - 016009719, excl 0160065792, 0160065798, 0160065824, 0160069383 & 0160069411	
	6042	Prior To 0160031200
		0160031200 - 016009719, excl 0160065792, 0160065798, 0160065824, 0160069383 & 0160069411	
	8042	Prior To 0160031235
		0160031235 - 0160069721, excl 0160065791, 0160065796, 0160065825, 0160065826, 0160069336, 0160069359 & 0160069441	
	10042	Prior To 0160031425
0160031425 - 0160069721, excl 0160065791, 0160065796, 0160065825, 0160065826, 0160069336, 0160069359 & 0160069441			
10054	Prior To 0160031255	
	0160031255 - 0160069721, excl 0160065791, 0160065796, 0160065825, 0160065826, 0160069336, 0160069359 & 0160069441		

NOTES:

- Use only JLG approved attachments with proper material handler model/attachment load capacity charts displayed in the operator's cab.
- Forks rated less than the attachment and/or machine capacity decrease the capacity of the attachment and machine to that of the forks.
- Forks rated more than the attachment and/or machine capacity do not increase the attachment or machine capacity.
- Never use your attachment as a work platform or personnel carrier.

Can't find the attachment you are looking for? Contact your JLG Aftermarket Parts representative at 1-877-JLG-LIFT or visit www.jlg.com.

NON-CURRENT FORKS | LULL

Non-Current Production - Pallet Forks, Lull Available Through JLG Aftermarket Parts

TYPE		Pallet								
CAPACITY PER FORK AT 24 IN. LOAD CENTER		4000 lbs.	4000 lbs.	4000 lbs.	5000 lbs.	5000 lbs.	5000 lbs.	5000 lbs.	5000 lbs.	
FORK DIMENSIONS		2"x4"x42"	2"x4"x48"	2"x4"x60"	2"x4"x48"	2"x5"x42"	2"x5"x48"	2"x5"x60"	2.25"x4"x42"	
EYE DIAMETER		1.875 in.	1.875 in.	1.875 in.	2 in.	2 in.	2 in.	2 in.	2 in.	
FORK DROP		25 in.	27 in.	25 in.	24 in.	25 in.	27 in.	27 in.	25 in.	
PART NO.		10238026	1001099850	10238117	7301408	10238568	1001099846	1001099848	10239893	
Model	SN Break									
LULL	644B-37	ALL	•	•	•					
	644B-42	ALL	•	•	•					
	644D-34	ALL	•	•	•					
	644E-42	Prior To 0160037794				•				
		0160037794 - Present				•				
	844C-42	ALL	•	•	•					
	944E-42	Prior To 0160037794				•				
	1044C-42	ALL				•	•	•	•	
	1044C-54	ALL				•	•	•	•	
	1044C-54 SII	Prior To 0160037893		•			•	•	•	
		0160037893 - Present				•				
	6K-37	ALL	•	•	•					
	6K-42	ALL	•	•	•					
8K-42	ALL	•	•	•						
10K-42/10K-54	ALL					•	•	•	•	

Non-Current Production - Pallet Forks, Lull Available Through JLG Aftermarket Parts

Pallet options continue below

TYPE		Pallet				Pallet (Swing Carriage Only)		
CAPACITY PER FORK AT 24 IN. LOAD CENTER		5000 lbs.	5475 lbs.	5600 lbs.	6850 lbs.	5000 lbs.	5060 lbs.	
FORK DIMENSIONS		2.25"x4"x48"	2.25"x4"x48"	2.25"x6"x72"	2.25"x5"x48"	2"x5"x60"	2"x5"x48"	
EYE DIAMETER		2 in.	2.25 in.	2.25 in.	2.25 in.	2.25 in.	2.25 in.	
FORK DROP		27 in.	24 in.	24 in.	24 in.	22 in.	22 in.	
PART NO.		1001099847	2340045	1001259206	2340038	10239970	2340048	
Model	SN Break							
LULL	644B-37	ALL						
	644B-42	ALL						
	644D-34	ALL						
	644E-42	Prior To 0160037794			•		•	
		0160037794 - Present			•	•	•	
	844C-42	ALL						
	944E-42	Prior To 0160037794			•		•	
	1044C-42	ALL	•					
	1044C-54	ALL	•					
	1044C-54 SII	Prior To 0160037893	•				•	•
		0160037893 - Present			•	•	•	
	6K-37	ALL						
	6K-42	ALL						
8K-42	ALL							
10K-42/10K-54	ALL	•						

NOTES:

- Use only JLG approved attachments with proper material handler model/attachment load capacity charts displayed in the operator's cab.
- Forks rated less than the attachment and/or machine capacity decrease the capacity of the attachment and machine to that of the forks.
- Forks rated more than the attachment and/or machine capacity do not increase the attachment or machine capacity.
- Never use your attachment as a work platform or personnel carrier.

Can't find the attachment you are looking for? Contact your JLG Aftermarket Parts representative at 1-877-JLG-LIFT or visit www.jlg.com.

Non-Current Production - Cubing and Lumber Forks, Lull

Available Through JLG Aftermarket Parts

TYPE		Cubing				Lumber		
CAPACITY PER FORK AT 24 IN. LOAD CENTER		1940 lbs.	2000 lbs.	2000 lbs.	2000 lbs.	4000 lbs.	4000 lbs.	5000 lbs.
FORK DIMENSIONS		2"x2"x48"	2"x2"x48"	2"x2"x48"	2"x2"x48"	1.75"x6"x48"	1.75"x6"x60"	1.75"x7"x48"
EYE DIAMETER		2.25 in.	2 in.	2 in.	2 in.	1.875 in.	1.875 in.	2 in.
FORK DROP		24 in.	22 in.	25 in.	27 in.	25 in.	25 in.	25 in.
PART NO.		2340037	7139747	10238118	1001099845	10217103	10223610	10239094
Model	SN Break							
LULL	644B-37	ALL			.	.	.	
	644B-42	ALL			.	.	.	
	644D-34	ALL			.	.	.	
	644E-42	Prior To 0160037794	.	.				
		0160037794 - Present	.					
	844C-42	ALL			.	.	.	
	944E-42	Prior To 0160037794	.	.				
	1044C-42	ALL			.	.	.	
	1044C-54	ALL			.	.	.	
	1044C-54 SII	Prior To 0160037893			.	.		
		0160037893 - Present	.					
	6K-37	ALL			.	.	.	
	6K-42	ALL			.	.	.	
	8K-42	ALL			.	.	.	
10K-42/10K-54	ALL			

Non-Current Production - Lumber Forks, Lull

Available Through JLG Aftermarket Parts

Lumber options continue below

TYPE		Lumber						
CAPACITY PER FORK AT 24 IN. LOAD CENTER		5000 lbs.	5400 lbs.	5650 lbs.	6000 lbs.	8150 lbs.	5000 lbs.	
FORK DIMENSIONS		1.75"x7"x60"	1.75"x7"x60"	2"x6"x60"	1.75"x7"x60"	2.25"x6"x60"	1.75"x7"x60"	
EYE DIAMETER		2 in.	2.25 in.	2 in.	2 in.	2.25 in.	2.25 in.	
FORK DROP		27 in.	24 in.	24 in.	24 in.	24 in.	22 in.	
PART NO.		1001099849	2340046	2340036	7139746	2340039	10239969	
Model	SN Break							
LULL	644B-37	ALL						
	644B-42	ALL						
	644D-34	ALL						
	644E-42	Prior To 0160037794			.	.	.	
		0160037794 - Present			.	.	.	
	844C-42	ALL						
	944E-42	Prior To 0160037794			.	.	.	
	1044C-42	ALL	.					
	1044C-54	ALL	.					
	1044C-54 SII	Prior To 0160037893	.					.
		0160037893 - Present			.		.	
	6K-37	ALL						
	6K-42	ALL						
	8K-42	ALL						
10K-42/10K-54	ALL	.						

NOTES:

- Use only JLG approved attachments with proper material handler model/attachment load capacity charts displayed in the operator's cab.
- Forks rated less than the attachment and/or machine capacity decrease the capacity of the attachment and machine to that of the forks.
- Forks rated more than the attachment and/or machine capacity do not increase the attachment or machine capacity.
- Never use your attachment as a work platform or personnel carrier.

Can't find the attachment you are looking for? Contact your JLG Aftermarket Parts representative at 1-877-JLG-LIFT or visit www.jlg.com.

Fork Pins and Bars

Whether you call it a fork pin, fork bar or fork shaft, we can supply your JLG Telehandler with the size you need. Looking for a specific size? Please refer to the table below. If your size is not listed, or for compatibility questions, consult the JLG Parts Department prior to purchase.

Features

- Available in diameters from 1 7/8" to 2.36"
- Zinc Plated for durability



SIZE (in.)	PART NO.
1 7/8" x 53 3/4"	10138064
1 7/8" x 54.06"	10138499
1 7/8" x 76 1/4"	10116207
2 3/8" x 50 13/16"	7028136
2" x 51.12"	7128772
2" x 54 1/2"	90451058
2" x 54.06"	10165685
2" x 54.25"	10223049
2" x 55.38"	7128782
2" x 63.12"	7128792
2" x 71"	90402478
2" x 72 1/8"	91301083
2" x 74"	70012208
2" x 76 1/2"	90551013
2" x 77.25"	10124495
2.25" x 12 3/4"	91401340
2.25" x 48.38"	70021339

SIZE (in.)	PART NO.
2.25" x 50.25"	70022105
2.25" x 52.44"	70022990
2.25" x 54 5/8"	91401303
2.25" x 55.125"	3423275
2.25" x 64.5" (non plated)	70011218
2.25" x 64.5" (plated)	70011215
2.25" x 74"	70011217
2.25" x 74" (non plated)	70011220
2.25" x 65.125"	3423242
2.25" x 69" (non plated)	70011219
2.25" x 69" (plated)	70011216
2.25" x 75"	70011990
2.25" x 77.125"	3423276
2.25" x 78 5/8"	91401324
2.25" x 79"	70020027
2.36" x 24.69"	4040283
3" x 84"	70011759



NOTES:

- Use only JLG approved attachments with proper material handler model/attachment load capacity charts displayed in the operator's cab.
- Forks rated less than the attachment and/or machine capacity decrease the capacity of the attachment and machine to that of the forks.
- Forks rated more than the attachment and/or machine capacity do not increase the attachment or machine capacity.
- Never use your attachment as a work platform or personnel carrier.

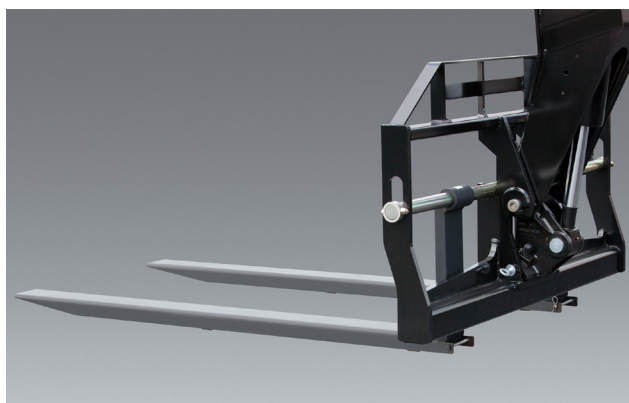
Can't find the attachment you are looking for? Contact your JLG Aftermarket Parts representative at 1-877-JLG-LIFT or visit www.jlg.com.

Fork Extensions

The fork extensions increase your machine's versatility on the jobsite.

Features

- Factory approved
- Designed specifically for JLG manufactured telehandlers
- Requires two per machine
- Requires fork part number 1001092391 or 2340039 for use



Current Production - Fork Extensions

Available Through JLG Aftermarket Or With New Machine Orders

FORK DIMENSIONS		2"x6"x60"	2.36"x6"x60"	2"x6"x60"	2.36"x6"x60"
LOAD CENTER		24 in.	24 in.	45 in.	45 in.
CAPACITY (MAX)		4200 lbs.	6000 lbs.	2240 lbs.	3200 lbs.
APPROX. WEIGHT		1490 lbs.			
PART NO.		1001137512			
LENGTH		90"			
MODEL	SN BREAKS				
JLG	742	ALL			•
	943/ 1043	Without Outriggers			•
		With Outriggers			•
	1055	Prior To 0160074169			•
		0160074169 - Present			•
	1255	Prior To 0160074168			•
0160074168 - Present				•	
1075	ALL			•	
SKYTRAK T4E	6036	0160069720 - 0160075649, incl 0160065792, 0160065798, 0160065824, 0160069383, 0160069411, 0160075653 & 0160075722			•
		0160075650 - Present, excl 0160075653 & 0160075722			•
	6042	0160069720 - 0160075656, incl 0160065792, 0160065798, 0160065824, 0160069383 & 0160069411			•
		0160075657 - Present			•
	8042	0160069722 - 0160075670, incl 0160065791, 0160065796, 0160065825, 0160065826, 0160069336, 0160069359 & 0160069441			•
		0160075671 - Present			•
	10042	0160069722 - 0160075987, incl 0160065791, 0160065796, 0160065825, 0160065826, 0160069336, 0160069359 & 0160069441			•
		0160075988 - Present			•
	10054	0160069722 - 0160075682, incl 0160065791, 0160065796, 0160065825, 0160065826, 0160069336, 0160069359, 0160069441 & 0160075696			•
		0160075683 - Present, excl 0160075696			•
12054	All			•	

NOTES:

- Use only JLG approved attachments with proper material handler model/attachment load capacity charts displayed in the operator's cab.
- Forks rated less than the attachment and/or machine capacity decrease the capacity of the attachment and machine to that of the forks.
- Forks rated more than the attachment and/or machine capacity do not increase the attachment or machine capacity.
- Never use your attachment as a work platform or personnel carrier.

Can't find the attachment you are looking for? Contact your JLG Aftermarket Parts representative at 1-877-JLG-LIFT or visit www.jlg.com.

FORK EXTENSIONS

Non-Current Production - Fork Extensions, JLG Available Through JLG Aftermarket Parts

FORK DIMENSIONS		2"x6"x60"	2.36"x6"x60"	2"x6"x60"	2.36"x6"x60"
LOAD CENTER		24 in.	24 in.	45 in.	45 in.
CAPACITY (MAX)		4200 lbs.	6000 lbs.	2240 lbs.	3200 lbs.
APPROX. WEIGHT		1490 lbs.			
PART NO.		1001137512			
LENGTH		90 in.			
MODEL	SN BREAKS				
JLG	642	ALL			•
	G6-42A	0160037722 - 0160040659			•
		0160040678 - Present			•
	G9-43A	0160037671 - 0160040674, excl 0160040468 & 0160040672			•
		0160040675 - Present, incl 0160040468 & 0160040672			•
	G10-43A	0160037671 - 0160040674, excl 0160040468 & 0160040672			•
		0160040675 - Present, incl 0160040468 & 0160040672			•
	G10-55A	0160037690 - 0160038486, incl 0160038505 & 0160038507, excl 0160038324, 0160038489 & 0160038493			•
		0160038500 - Present, incl 0160038324, 0160038489 & 0160038493, excl 0160038505 & 0160038507			•
	G12-55A	0160037689 - 0160038533			•
0160038538 - Present				•	
G15-44A	Prior To 0160074142			•	
	0160074142 - Present			•	

Non-Current Production - Fork Extensions, SkyTrak Available Through JLG Aftermarket Parts

FORK DIMENSIONS		2"x6"x60"	2.36"x6"x60"	2"x6"x60"	2.36"x6"x60"
LOAD CENTER		24 in.	24 in.	45 in.	45 in.
CAPACITY (MAX)		4200 lbs.	6000 lbs.	2240 lbs.	3200 lbs.
APPROX. WEIGHT		1490 lbs.			
PART NO.		1001137512			
LENGTH		90 in.			
MODEL	SN BREAKS				
SKYTRAK	6036	0160031200 - 0160069719, excl 0160065792, 0160065798, 0160065824, 0160069383 & 0160069411			•
	6042	0160031200 - 0160069719, excl 0160065792, 0160065798, 0160065824, 0160069383 & 0160069411			•
	8042	0160031235 - 0160069721, excl 0160065791, 0160065796, 0160065825, 0160065826, 0160069336, 0160069359 & 0160069441			•
	10042	0160031425 - 0160069721, incl 0160065791, 0160065796, 0160065825, 0160065826, 0160069336, 01600669359 & 0160069441			•
	10054	0160031255 - 0160069721, excl 0160065791, 0160065796, 0160065825, 0160065826, 0160069336, 0160069359 & 0160069441			•

Non-Current Production - Fork Extensions, Lull Available Through JLG Aftermarket Parts

FORK DIMENSIONS		2"x6"x60"	2.36"x6"x60"	2"x6"x60"	2.36"x6"x60"
LOAD CENTER		24 in.	24 in.	45 in.	45 in.
CAPACITY (MAX)		4200 lbs.	6000 lbs.	2240 lbs.	3200 lbs.
APPROX. WEIGHT		1490 lbs.			
PART NO.		1001137512			
LENGTH		90 in.			
MODEL	SN BREAKS				
LULL	644E-42	0160037900 - Present			•
	944E-42	0160037794 - Present, incl 0160045421			•
	1044C-54 SII	0160037794 - Present			•

NOTES:

- Use only JLG approved attachments with proper material handler model/attachment load capacity charts displayed in the operator's cab.
- Forks rated less than the attachment and/or machine capacity decrease the capacity of the attachment and machine to that of the forks.
- Forks rated more than the attachment and/or machine capacity do not increase the attachment or machine capacity.
- Never use your attachment as a work platform or personnel carrier.

Can't find the attachment you are looking for? Contact your JLG Aftermarket Parts representative at 1-877-JLG-LIFT or visit www.jlg.com.

Fork Caliper

Worn out forks are unreliable and inefficient on the job site. A fork caliper can help you to identify fork wear before it becomes an issue.

If the inner jaws pass over the fork, wear is more than 10%. When wear is more than 10%, the fork must be removed from service and replaced. If the inner jaws hit the fork, wear is within the tolerance and the fork is approved for use.

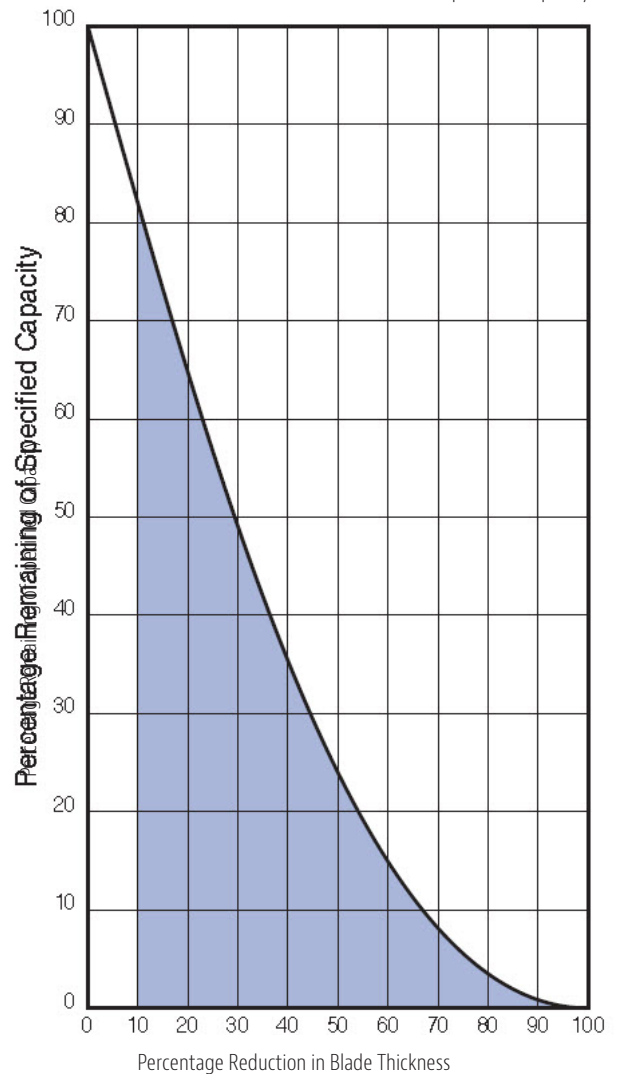
Features

- Pocket portable
- Easy to use on the job
- Measure the thickness of the fork arm shank



DESCRIPTION	PART NO.
Fork Inspection Safety Kit (Includes fork arm wear caliper guide, inspection log and caliper)	70011840
Caliper	7025304

10% wear = 20% reduction in operation capacity



This chart shows how fork wear reduces truck capacity. ANSI/ITSDF B56.1-2012 standards require that each fork be at least half the capacity of the truck at the rated load center distance as shown on the truck nameplate. Refer to ANSI website: www.itsdf.org/pB56.asp

NOTES:

- Use only JLG approved attachments with proper material handler model/attachment load capacity charts displayed in the operator's cab.
- Never use your attachment as a work platform or personnel carrier.

Can't find the attachment you are looking for? Contact your JLG Aftermarket Parts representative at 1-877-JLG-LIFT or visit www.jlg.com.

JLG Industries, Inc.
1 JLG Drive
McConnellsburg, PA 17233-9533
Telephone 717-485-5161
Toll-free in US 877-JLG-LIFT
Fax 717-485-6417
www.jlg.com
An Oshkosh Corporation Company

Part No. 401013
R0621
Printed in USA

