



**JLG**<sup>®</sup>

**HIGH-CAPACITY  
TELEHANDLERS**



# VERSATILITY TRIFECTA

Have you ever come across an easy job site? Where conditions remain stable, everything goes as planned and obstacles call in sick? Neither have we. That's why JLG® High-Capacity Telehandlers are engineered to the highest standards, allowing you to attack even the toughest challenges with confidence.

And with the addition of the 2733, you get 26,600-lb max lift capacity with 8,000-lb capacity at max reach, 33-ft max lift height and industry-leading smart technology. Not to mention the expertise, innovation and reputation of the leader in access across a broader, fully capable lineup.

Meet the 1644, 1732 and all-new 2733.  
Heavy? Bulky? Bring it.

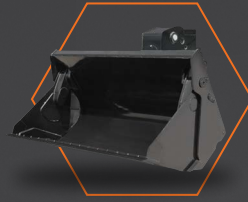


## SAY WHERE, SAY WHEN

JLG High-Capacity Telehandlers are built and proven to perform in the most demanding industries, saving time, money and labor on just about any job site.

- + INDUSTRIAL CONSTRUCTION
- + STEEL ERECTION
- + WIND
- + OIL & GAS
- + MINING





## GET MORE DONE

A wide range of specialized attachments lets you accomplish multiple tasks with one machine, decreasing the need for more traditional machines, like wheel loaders. And because they can handle heavy, bulky loads, our High-Capacity Telehandlers are also ideal for performing maintenance on other machines in rental yards.



# ENJOY THE RIDE

Our high-capacity family is built with operators in mind, which means the features and benefits run deep. A hard day's work will never feel the same.

## **INCREASED CONFIDENCE**

- + OPTIONAL REVERSE SENSING SYSTEM ALERTS THE OPERATOR OF REAR OBSTRUCTIONS WITH AN AUDIBLE ALARM
- + OPTIONAL MULTIFUNCTION DISPLAY WITH REVERSING CAMERA PUTS IMPORTANT MACHINE INFORMATION LIKE ELECTRONIC LOAD CHARTS AND DIAGNOSTICS AT THE OPERATOR'S FINGERTIPS

## **BETTER BOOM CONTROL**

- + PRECISION GRAVITY LOWERING GIVES OPERATORS GREATER CONTROL OVER LOAD PLACEMENT AND PROVIDES FUEL SAVINGS
- + OPTIONAL REMOTE BOOM CONTROL ENABLES OPERATORS TO CONTROL THE BOOM FROM OUTSIDE THE CAB, PROVIDING IMPROVED VISIBILITY DURING LOAD PLACEMENT
- + FINELY TUNED BOOM CONTROLS AND A STANDARD SOFT STOP FOR PLACING LOADS WITH MORE PRECISION

## **ENHANCED EFFICIENCY**

- + INCHING FEATURE AUTOMATICALLY SHIFTS THE TRANSMISSION INTO NEUTRAL WHEN THE SERVICE BRAKE IS DEPRESSED, ALLOWING OPERATORS TO RUN THE BOOM AT MAXIMUM SPEED FOR FASTER DELIVERY OF MATERIALS AT HEIGHT
- + A CAST COUNTERWEIGHT AND INTEGRATED TOW HITCH FOR ADDED VERSATILITY ON THE JOB SITE
- + INDUSTRY-SPECIFIC ATTACHMENTS FOR SPECIALIZED APPLICATIONS

## **SUPERIOR CAB COMFORT**

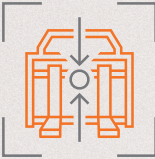
- + TILT STEERING
- + ADJUSTABLE SUSPENSION SEAT AND ARMREST
- + INTUITIVE SINGLE JOYSTICK CONTROL
- + EXCELLENT HVAC PERFORMANCE





# TECHNOLOGY FOR A NEW GENERATION

Each of our High-Capacity Telehandlers offers SmartLoad Technology, an optional package combining wireless attachment recognition with real-time load data to increase operator confidence and optimize productivity. It also protects your fleet by giving operators clear guidance to help them avoid overloading. This comprehensive, industry-first package includes three parts:



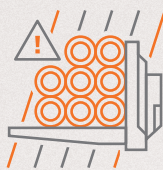
### **AUTOMATIC ATTACHMENT RECOGNITION**

RECOGNIZES ATTACHMENTS ON THE END OF THE BOOM AND DISPLAYS THE APPROPRIATE LOAD CHART TO THE OPERATOR



### **LOAD MANAGEMENT INFORMATION SYSTEM (LMIS)**

GRAPHICALLY DEPICTS THE LOCATION OF THE LOAD WITHIN THE LOAD CHART, INDICATES WHETHER THE LOAD IS COMPLIANT AND HELPS PREVENT THE OPERATOR FROM VIOLATING THE BOUNDARIES OF THE CHART



### **LOAD STABILITY INDICATOR (LSI)**

WORKS WITH THE LMIS SYSTEM TO LIMIT OPERATION WHEN THE LOAD IS NEARING THE MAXIMUM CAPACITY INDICATED ON THE LOAD CHART





# IT'S A BIG DEAL

When jaws drop on the job site, blame the all-new 2733 High-Capacity Telehandler. With 160 hp, the ability to handle 26,600-lbs and 8,000-lbs at max reach, it's our most powerful telehandler yet. Operators will also love the increased maneuverability and unrivaled cabin comfort.

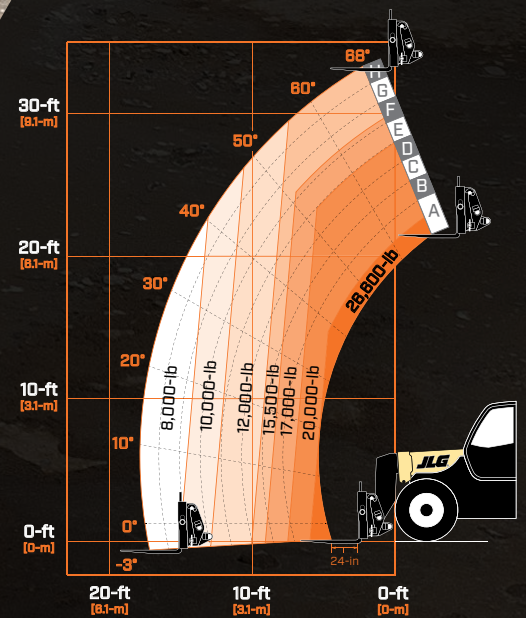
26,600-lb  
MAXIMUM LIFT CAPACITY

33-ft 1-in  
MAXIMUM LIFT HEIGHT

17-ft 7-in  
MAXIMUM REACH



# 2733



## KEY FEATURES & OPTIONS

- + 160 HP CUMMINS QSB 4.5L ENGINE
- + 2-SPEED HYDROSTATIC TRANSMISSION
- + 8,000-LB LOAD AT MAXIMUM REACH
- + SPECIALIZED ATTACHMENTS
- + STANDARD LOAD STABILITY INDICATION (LSI)
- + OPTIONAL RIGHT SIDE ELECTRONIC MIRROR FOR ENHANCED RIGHT SIDE VISIBILITY
- + OPTIONAL SMARTLOAD TECHNOLOGY
- + OPTIONAL MULTIFUNCTION DISPLAY WITH REVERSING CAMERA
- + OPTIONAL REVERSE SENSING SYSTEM
- + OPTIONAL REMOTE BOOM CONTROL
- + OPTIONAL RIDE CONTROL AND BOOM FLOAT

GREATER COMFORT AND CONFIDENCE

MORE PRODUCTIVITY FOR LOWER PROJECT COSTS

ENHANCED SAFETY AND EFFICIENCY



# 1644



## THE LEGEND GROWS

As tough and intelligent as ever, our 1644 and 1732 High-Capacity Telehandlers continue to make their mark on job sites everywhere. Quality. Reliability. High resale value. Would you expect anything less?

### 1644 & 1732 KEY FEATURES & OPTIONS

- + 134 HP DEUTZ TCD 3.6L ENGINE
- + 2-SPEED HYDROSTATIC TRANSMISSION
- + SPECIALIZED ATTACHMENTS
- + OPTIONAL SMARTLOAD TECHNOLOGY
- + OPTIONAL MULTIFUNCTION DISPLAY WITH REVERSING CAMERA
- + OPTIONAL REVERSE SENSING SYSTEM
- + OPTIONAL REMOTE BOOM CONTROL
- + OPTIONAL RIDE CONTROL AND BOOM FLOAT



# 1732



## 1644 TELEHANDLER

MAXIMUM LIFT CAPACITY

15,650-lb

MAXIMUM LIFT HEIGHT

43-ft 7-in

MAXIMUM REACH

31-ft 1-in

## 1732 TELEHANDLER

16,755-lb

31-ft 8-in

18-ft 7-in



# VERSATILITY IS AN UNDERSTATEMENT



The range of attachments JLG High-Capacity Telehandlers bring to the job site is impressive to say the least. Select attachments are also industry-specific, making them more tailored for tough industries like wind, oil and gas, steel erection and industrial construction.



#### LIGHT MATERIAL BUCKET

Used to clean up the job site, spread gravel or for loading and leveling



#### COUPLER MOUNTED HOOK

For lifting and lowering objects



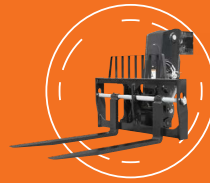
#### MATERIAL HANDLING ARM

Designed for lifting and placing objects around the job site



#### PIPE GRAPPLE

For handling multiple pipes or a larger single pipe



#### PALLET FORKS

Rugged design makes it easier to handle heavy palletized material



#### DUAL FORK POSITIONING CARRIAGE

Adjust each fork position independently to handle various palletized loads without leaving the cab



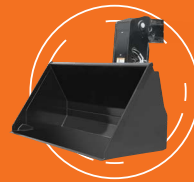
#### COUPLER MOUNTED WINCH

Can be used to set trusses and wall sections for wood and steel building construction



#### GRAPPLE BUCKET

Uses hydraulic arms to secure bulky loads and is useful for cleaning debris from job sites



#### GENERAL PURPOSE BUCKET

Used to clean up the job site, to spread materials and for loading and leveling



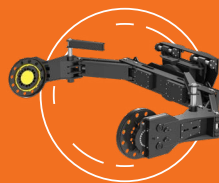
#### MULTI-PURPOSE 4-IN-1 BUCKET

Can be used for loading, leveling, bottom dumping or as a grapple bucket



#### STEEL COIL HANDLER

For transporting steel coils and cables



#### TIRE HANDLER

Increases productivity by reducing or eliminating the manual labor involved with tire mounting, removal and handling.



#### FORK-MOUNTED EXTENDABLE TRUSS

Ideal for metal building erection, setting wooden trusses and erecting post frame buildings



#### SIDE-SHIFT CARRIAGE WITH DUAL FORK POSITIONING

Adjust fork position independently; use left and right carriage shift to handle palletized loads from inside the cab





### LOG HANDLER

For handling multiple logs or a large single log



### BALE CLAMP

For picking, carrying and placing large square bales



### BALE CRADLE

For picking, carrying and placing large round bales



### STANDARD CARRIAGE

Forks that are fully floating and adjustable side-to-side for efficient load entry and exit

# SPECIFICATIONS

	1644	1732	2733
<b>RATED CAPACITY AT 24-IN LOAD CENTER</b>	15,650-lb / 7,100-kg	16,755-lb / 7,600-kg	26,600-lb / 12,065-kg
<b>MAXIMUM LIFT HEIGHT</b>	43-ft 7-in / 13.28-m	31-ft 8-in / 9.65-m	33-ft 1-in / 10.1-m
<b>CAPACITY AT MAXIMUM LIFT HEIGHT</b>	6,750-lb / 3,062-kg	9,900-lb / 4,491-kg	15,500-lb / 7,030-kg
<b>MAXIMUM REACH</b>	31-ft 1-in / 9.47-m	18-ft 7-in / 5.66-m	17-ft 7-in / 5.37-m
<b>CAPACITY AT MAXIMUM REACH</b>	2,000-lb / 907-kg	5,500-lb / 2,495-kg	8,000-lb / 3,628-kg
<b>APPROXIMATE OPERATING WEIGHT</b>	33,660-lb / 15,265-kg	31,145-lb / 14,127-kg	38,775-lb / 17,555-kg
<b>LENGTH (LESS FORKS)</b>	243-in / 6.17-m	233-in / 5.92-m	249-in / 6.32-m
<b>WIDTH</b>	97-in / 2.46-m	97-in / 2.46-m	98-in / 2.50-m
<b>HEIGHT</b>	105-in / 2.67-m	105-in / 2.67-m	120-in / 3.05-m
<b>WHEELBASE</b>	127-in / 3.23-m	127-in / 3.23-m	142-in / 3.60-m
<b>OUTSIDE TURNING RADIUS</b>	13-ft 2-in / 4.01-m	13-ft 2-in / 4.01-m	14-ft 8-in / 4.5-m
<b>GROUND CLEARANCE</b>	19-in / 483-mm	19-in / 483-mm	17-in / 440-mm
<b>DRIVE</b>	4 x 4	4 x 4	4 x 4
<b>ENGINE</b>	Deutz TCD 3.6 L	Deutz TCD 3.6 L	Cummins QSB 4.5 L
<b>HORSEPOWER</b>	134-hp @ 2200 rpm	134-hp @ 2200 rpm	160-hp @ 2200 rpm
<b>TRANSMISSION</b>	Hydrostatic 2-speed	Hydrostatic 2-speed	Hydrostatic 2-speed
<b>AXLE—FRONT</b>	High-Bias, Limited Slip	High-Bias, Limited Slip	High-Bias, Limited Slip
<b>AXLE—BACK</b>	Planetary	Planetary	Planetary
<b>STEERING</b>	All-Wheel	All-Wheel	All-Wheel
<b>TIRES</b>	17.5-25 SGG	17.5-25 SGG	17.5-25 Air CAMSO L2
<b>MAXIMUM TRAVEL SPEED</b>	20 mph / 32 km/h	20 mph / 32 km/h	17 mph / 28 km/h
<b>FRAME LEVELING</b>	±8 Degrees	±8 Degrees	±8 Degrees



We provide coverage for one (1) full year on the entire machine, two (2) full years or 2,000 hours on the drivetrain and cover all specified major structural components for five (5) years. Due to continuous product improvements, we reserve the right to make specification and/or equipment changes without prior notification.





GIVE IT HEAVY, GIVE IT BULKY.  
**OUR HIGH-CAPACITY  
LINEUP STANDS READY.**



[JLG.com](https://www.jlg.com)

Part No. 3132250 | R1021\_02