

# Genie® Z®-80/60

## Specifications

Models	Z-80/60	
Measurements	US	Metric
Working height max. <sup>(1)</sup>	84 ft	25.77 m
Platform height max.	78 ft	23.77 m
Horizontal reach max.	60 ft	18.29 m
Below ground reach	15 ft 10 in	4.83 m
Up and over clearance max.	29 ft	8.83 m
<b>A</b> Platform length (8 ft/6 ft)	3 ft/2 ft 6 in	0.91 m/0.76 m
<b>B</b> Platform width (8 ft/6 ft)	8 ft/6 ft	2.44 m/1.83 m
<b>C</b> Height - stowed	9 ft 10 in	3.00 m
<b>D</b> Length - stowed	37 ft	11.27 m
<b>D</b> Length - storage/transport (jib tucked under)	24 ft 10.5 in	7.3 m
<b>E</b> Length - transport	37 ft	11.27 m
<b>F</b> Width	8 ft 2 in	2.49 m
<b>G</b> Wheelbase	9 ft 4 in	2.85 m
<b>H</b> Ground clearance - center	12 in	0.30 m

### Productivity

Lift capacity max. - unrestricted	500 lb	227 kg
Platform rotation	160°	
Jib length	6 ft	1.83 m
Vertical jib rotation	135°	
Turntable rotation	360°	
Drive speed - stowed <sup>(2)</sup>	3.0 mph	4.83 km/h
Drive speed - raised	0.68 mph	1.1 km/h
Gradeability - stowed <sup>(2)</sup>	30%	
Tilt sensor activation (front to back/side to side)	4.5° / 4.5°	
Turning radius - inside/outside	14 ft 6 in/24 ft 6 in	4.42 m/7.47 m
Tires	18-625 NHS	

### Power

Power	Diesel	
Auxiliary power unit	12V DC	
Hydraulic tank capacity	45 gal	170 L
Fuel tank capacity	35 gal	132 L

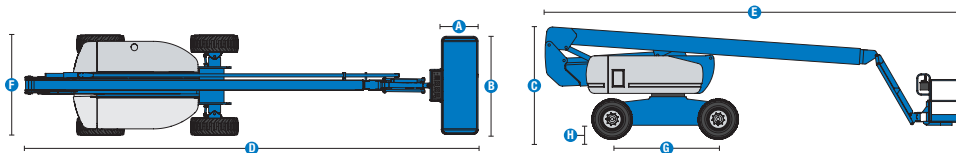
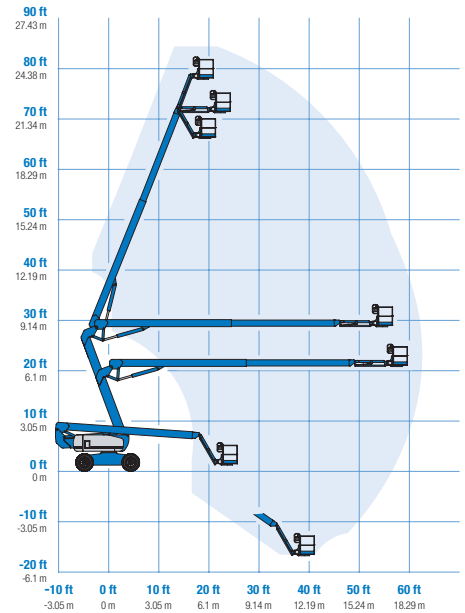
### Weight<sup>(3)</sup> and Floor Loading<sup>(4)</sup>

Weight, 2WS	37,500 lb	17,010 kg
Weight, 4WS	38,000 lb	17,237 kg
Tire contact pressure	130 psi	896 kPa
Occupied floor pressure (tires)	377 psf	18.05 kPa

### Sound and Vibration Levels

Sound Pressure level (ground workstation)	85 dBA
Sound Pressure level (platform workstation)	74 dBA
Vibrations	8 ft 2 in/s <sup>2</sup> 2.5 m/s <sup>2</sup>

## Range of motion Z-80/60



(1) The metric equivalent of working height adds 2m to platform height. The imperial equivalent adds 6ft to platform height.  
 (2) Gradeability applies to driving on slopes and may vary depending on options and machine configurations. See operator's manual for details regarding slope ratings.  
 (3) Weight refers to standard configuration and may vary depending on options and/or country standards.  
 (4) Floor loading information is approximate and may vary depending on options and machine configurations. It should be used only with adequate safety factors.

# Genie® Z®-80/60

**SKU: Standard Model**

- **Z8000001AF0049:** Z-80/60, 4WD
- **Z8000001AF0078:** Z-80/60, 12kW Welder Ready, 4WD, 2WS

\* Build to Order

Option availability		S	S+	BtO
Power	67 hp, 50 kW, Perkins, 404F-E22TA, Turbo Diesel, T4f	✓	✓	✓
	70 hp, 52 kW, GM Vortec 3.0L Gas/LPG Dual Fuel	✓	✓	✓
	74 hp, 55 kW, Deutz TD2.9L4 turbo diesel, Tier 4f	✓	✓	✓
	Cold weather package			○
	Diesel air intake pre-cleaner			○
	LPG tank 33.5 lb		○	○
	Positive air shutdown system			○
	Auto engine fault shutdown	✓	✓	✓
	Engine gauge display	✓	✓	✓
	Platform	6ft/1.83m dual-entry platform with side swing gate		
8ft/2.44m tri-entry platform with side swing gate		✓	✓	✓
Dual axis joystick steering		✓	✓	✓
Thumb rocker steering				○
Air line to platform				○
Control box covers			○	○
Lift Guard Full Mesh panels				○
Lift Guard Half Mesh panels				○
Light Package: drive and work lights			○	○
Platform auxiliary top rail				○
3kW AC Generator, 110V/60Hz				○
3kW AC Generator, 220V/50Hz				○
12kW Welder ready				○
6ft/1.83m Jib		✓	✓	✓
AC Power cord to platform		✓	✓	✓
Alarm package: flashing beacons, descent, travel and tilt alarms		✓	✓	✓
Drive enable system		✓	✓	✓
Horn		✓	✓	✓
Lift Guard Contact Alarm		✓	✓	✓
Lift Tools Work Tray		✓	✓	✓
Platform load sense system		✓	✓	✓
Proportional controls		✓	✓	✓
Self-leveling platform	✓	✓	✓	
Telescoping riser for up and over	✓	✓	✓	
Chassis	Lift Connect Telematics		○	○
	Telematics-ready	✓	✓	✓
	Lift Connect with Access Manager upgrade		○	○
	Biodegradable hydraulic oil			○
	Cold weather hydraulic oil			○
	Fire resistant hydraulic oil			○
	Rough terrain, foam-filled tires	✓	✓	✓
	Rough terrain, foam-filled, non-marking tires		○	○
	2 wheel steering	✓	✓	✓
	4 wheel steering			○
	Deluxe hostile environment kit			○
	Hostile environment kit			○
	2 speed wheel motors	✓	✓	✓
	Active oscillating axle	✓	✓	✓
	Chassis tilt drive function cut-out	✓	✓	✓
Chassis tilt lift function cut-out	✓	✓	✓	
Hour meter	✓	✓	✓	
Hydraulic oil cooler	✓	✓	✓	

Positive air shutdown Deutz engines only

- S Standard
- S+ Standard +
- BtO Build to Order
- ✓ Standard Features
- Options



Genie FastMast



3 Steering Modes



Outreach 60ft/18m



Genie Genuine Accessories<sup>(1)</sup>

- Lift Tools Productivity Tools
- Lift Connect Telematics
- Tech Pro Link Handheld Device

(1) More accessories available from Genie Genuine Parts.

Product specifications are subject to change without notice or obligation. Photographs and/or drawings herein are for illustrative purposes only. Refer to the appropriate Operator's Manual for instructions on proper equipment use. Failure to follow instructions in the Operator's Manual may result in serious injury or death. The only warranty applicable to our equipment is the standard written warranty applicable to the particular product and sale and we make no other warranty, express or implied. Products and services listed may be trademarks, service marks or trade names of Terex Corporation and/or their subsidiaries in the USA and many other countries. Terex, Genie, Quality By Design, Xtra Capacity, Lift Power, Lift Guard, Lift Tools, Lift Connect and Tech Pro Link are registered trademarks of Terex Corporation or its subsidiaries.