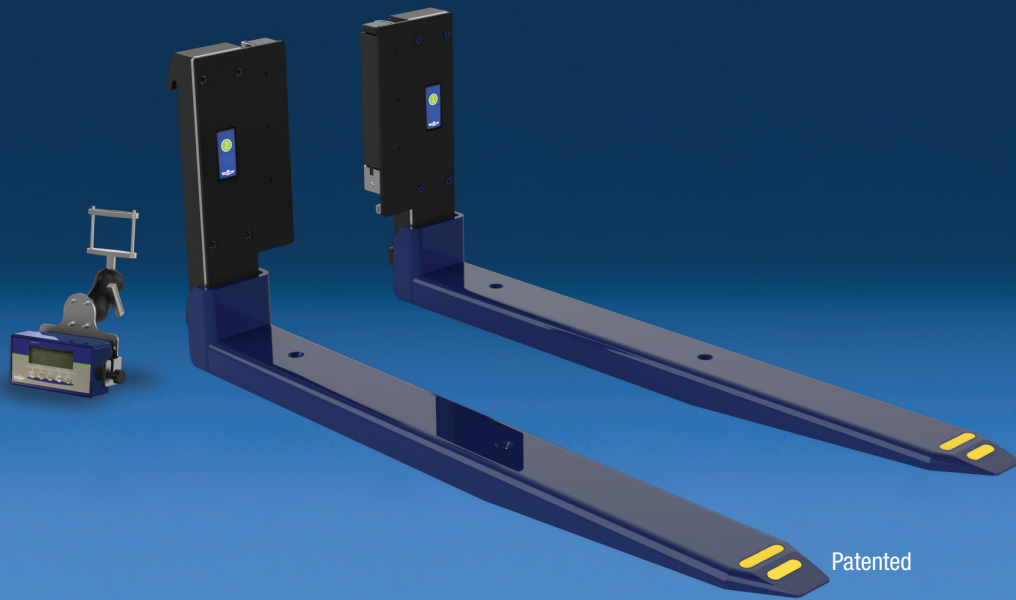


Perfect for Pallet Handling in Trailer Applications



Patented



Fork height of only 1.9 inches, close to the height of a regular fork



Wireless Display with easy-to-access rechargeable batteries



Each fork transmits information to the display via Bluetooth®



Rechargeable batteries come standard with all Weigh Forks models



Optional printers make it easy to track activities and print receipts or labels

APPLICATIONS

Weigh Forks work on virtually any lift truck with a carriage. These unique and innovative forks let you weigh your product more efficiently by allowing you to weigh your product as you lift it. The wireless display uses Bluetooth® technology enabling you to view and track the weight of individual loads and total weight of multiple loads. Weigh Forks Logistics Series are unique in that they feature a thinner but wider fork profile to accommodate GMA pallets. Common uses include incoming goods control, overload prevention, dosing, filling, waste management, order picking and inventory control.

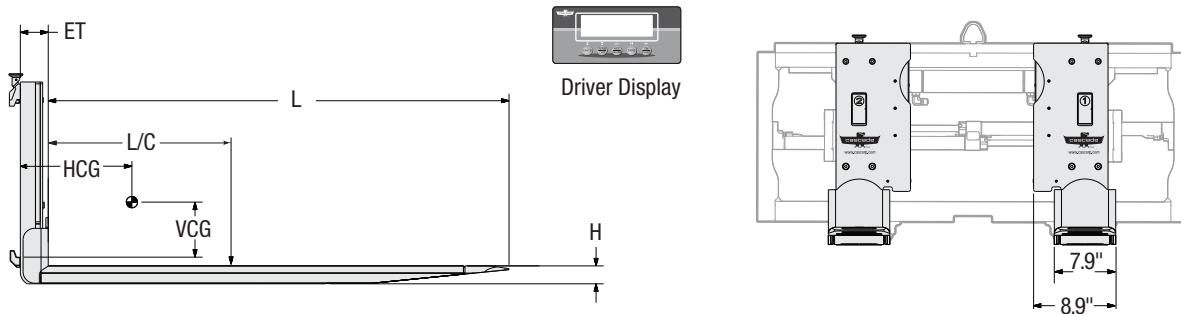
OPTIONS

- Data transfer output devices, including:
 - RS232
 - Wireless Bluetooth®
 - WLAN (Wi-Fi)
- Thermal and dot matrix printers
- Truck-powered display available
- Use with Fork Positioners or Rotators

FEATURES

- Quick installation and set up
- Three load cell sensors in each fork provide additional stability
- Digital calibration for fast and easy maintenance
- Interchangeable rechargeable batteries for each fork
- Bright backlit LCD driver display with rechargeable batteries
- Manual and automatic zero correction
- Gross/net weighing
- Displays both kg and lb units
- Automatic push button tare
- Automatic low voltage shut off
- Manual tare entry totaling with sequence number
- 5-digit ID code entry used to identify loads
- Piece counting by sampling or manual piece weight entry
- Error indicator to aid in troubleshooting
- Internal clock to time and date stamp printouts
- Compatible with load backrests
- Fork lengths ranging from 42" - 72"





Catalog Order No.	Capacity@ 24" (600 mm) Load Center		Fork Length (in) L	Fork Height (in) H	Weight per Pair (lbs)	Mounting Class	Horizontal Center of Gravity (in) HCG	Vertical Center of Gravity (in) VCG	Effective Thickness (in) ET
	lbs	kg							
Non-NTEP Approved: 0-5,000 lbs with 2 lb display graduations									
23C-WFG-2A-0115	5,000	2,300	42"	1.9"	432	II	12.9"	1.9"	2.9"
23C-WFG-2A-0123	5,000	2,300	48"	1.9"	444	II	13.8"	1.8"	2.9"
23C-WFG-2A-0131	5,000	2,300	54"	1.9"	517	II	18.2"	1.2"	2.9"
23C-WFG-2A-0139	5,000	2,300	60"	1.9"	527	II	19.1"	1.1"	2.9"
23C-WFG-2A-0146	5,000	2,300	72"	1.9"	614	II	24.6"	0.7"	2.9"
① NTEP Approved: 0-5,000 lbs with 5 lb display graduations									
23C-WFG-2A-0615	5,000	2,300	42"	1.9"	432	II	12.9"	1.9"	2.9"
23C-WFG-2A-0623	5,000	2,300	48"	1.9"	444	II	13.8"	1.8"	2.9"

① NTEP approved Weigh Forks will need to be certified on-site by a local weights and measures authority per local statute in order to be considered legal for trade.

▶ NTEP – National Type Evaluation Program is a program administered by the National Conference on Weights and Measures (NCWM), which established a uniform set of criteria and test procedures for the evaluation of commercial weighing and measuring devices (Used for legal for trade applications).

▶ System is capable of accuracy within .1% of actual load weight. However, due to the display graduation limitations, the display may yield results outside the .1% range. Consult Cascade for details.

▶ 6" fork shank width.

▶ Load length can not exceed the length of the fork by more than 6".

▶ When ordering Weigh Forks for use on a Cascade Fork Positioner, consult Cascade.

▶ Weigh Forks ship with a rechargeable battery powered driver display, mounting bracket, two rechargeable fork battery packs and chargers for each unless additional components are specified.

▶ The piece counting feature is not NTEP approved.

▶ Optimal temperature range is 15°F - 105°F.

▶ Ingress protection IP65. Do not pressure wash.

▶ Not recommended for use with Fork Extensions.

▶ **DO NOT USE TO CLAMP LOADS.**