



The fork positioner for heavy duty material handling requirements.

APPLICATIONS

The C-Series fork positioner is recommended for heavy duty applications including automotive, steel, paper, lumber and various outdoor uses.

FEATURES

- Easy hang-on installation—forks included
- Positive fork positioning
- Heavy duty forks are double shaft mounted
- Heavy duty bearing material
- 36- and 48-inch high load backrests

OPTIONS

- Integral fork sideshift
- Full frame sideshift
- 0-inch closing
- Pin mounting
- Independent arm control
- Integral mounting
- Special forks

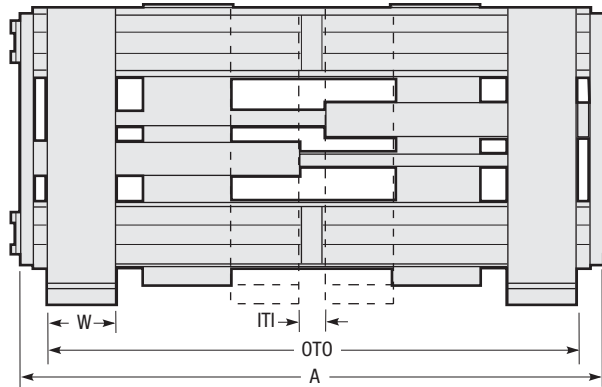
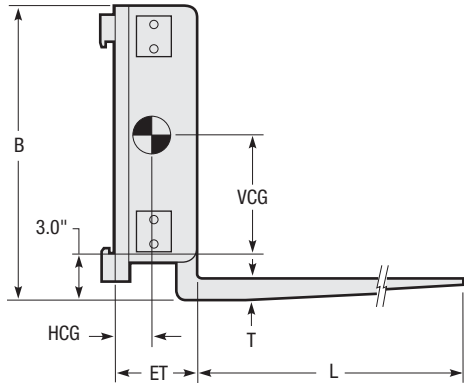


*An efficient,
rugged fork
positioner to
increase
productivity,
improve safety
and decrease
product damage.*



IMPORTANT: OSHA or state regulations may require the installation of backrests.

► Cascade supplied Load Backrest required.



Non-Sideshifting

Capacity @ 24" (600 mm) Load Center		Fork Size ① L x W x T	Opening Range ITI/ITO	Catalog Order No.	Mtg. Class	Min. Truck Carriage Width	Weight		Effective Thickness ET	Horizontal Ctr. of Gravity HCG	Vertical Ctr. of Gravity VCG	Frame Width A	Overall Height B
lbs	kg						lbs	kg					
5,500	2,495	42" x 5" x 1.75"	2"-33"	55C-FPB-A001	II	30"	550	250	6.9"	11.0"	9.8"	36.75"	22.5"
5,500	2,495	42" x 5" x 1.75"	2"-39"	55C-FPB-A002	II	30"	600	272	6.9"	10.7"	10.0"	42.75"	22.5"
5,500	2,495	42" x 5" x 1.75"	2"-45"	55C-FPB-A003	II	30"	650	295	6.9"	10.5"	10.2"	48.75"	22.5"
10,000	4,540	42" x 6" x 2.00"	2.75"-38"	100C-FPB-B001	III	36"	970	440	7.4"	10.4"	12.7"	42.75"	28.5"
10,000	4,540	42" x 6" x 2.00"	2.75"-44"	100C-FPB-B002	III	36"	995	452	7.4"	10.2"	12.8"	48.75"	28.5"
10,000	4,540	42" x 6" x 2.00"	2.75"-56"	100C-FPB-B003	III	36"	1,050	477	7.4"	9.8"	12.9"	60.75"	28.5"
12,000	5,450	48" x 6" x 2.25"	2.75"-44"	120C-FPB-C001	IV	36"	1,330	604	8.5"	9.9"	12.0"	48.75"	31.5"
12,000	5,450	48" x 6" x 2.25"	2.75"-50"	120C-FPB-C002	IV	42"	1,360	617	8.5"	9.2"	12.2"	54.75"	31.5"
12,000	5,450	48" x 6" x 2.25"	2.75"-56"	120C-FPB-C003	IV	42"	1,400	636	8.5"	9.6"	12.3"	60.75"	31.5"
15,000	6,810	48" x 6" x 2.50"	2.75"-44"	150C-FPB-C001	IV	36"	1,430	649	8.75"	11.6"	13.6"	48.75"	31.5"
15,000	6,810	48" x 6" x 2.50"	2.75"-50"	150C-FPB-C002	IV	42"	1,460	663	8.75"	11.4"	13.7"	54.75"	31.5"
15,000	6,810	48" x 6" x 2.50"	2.75"-56"	150C-FPB-C003	IV	42"	1,500	681	8.75"	11.2"	13.8"	60.75"	31.5"
15,000	6,810	48" x 6" x 2.50"	2.75"-68"	150C-FPB-C004	IV	44"	1,650	749	8.75"	10.8"	14.1"	72.75"	31.5"

① Additional fork sizes available.

- Sideshifting option available, consult Cascade.
- For fork carrier option to accommodate hook type forks consult Cascade.
- For lateral CG at maximum sideshift consult Cascade.

HYDRAULIC FLOW & PRESSURE

Maximum Pressure (psi/bar)	Number of Functions	Min-Rec-Max Function 1 (gpm)			Min-Rec-Max Function 2 (gpm)		
		1	2	3	5	7	10
2,300/159	2	1	2	3	5	7	10

MOUNTING CLASS INFORMATION

Mounting Class	Truck Capacity
II	2,000-5,500 lbs.
III	6,000-10,000 lbs.
IV	10,001-17,500 lbs.

HYDRAULIC FUNCTIONS

Models	Hydraulic Functions	Truck Auxiliary Valves Required
FPB	1	1

Integral Fork Sideshift (FPI)

Recommended for sideshifting empty forks only. Not recommended for sideshifting loads. Total sideshift depends on fork position.

Model	Catalog Order No.
All Models	SS01

Sideshifting Frame (FPS)

Provides full sideshift capability. Total sideshift is 8" for 55C & 100C, 12" for 120C & 150C. (Not available with Integral Mounting.)

Model	Catalog Order No.
55C	SS02
100C	SS03
120C & 150C	SS04

INSTALLATION KITS

Model	Catalog Order No.
C-Series Single Function	659245
C-Series Dual Function	659249